

BCL10 Antibody
Purified Mouse Monoclonal Antibody (Mab)
Catalog # AW5069**Specification**

BCL10 Antibody - Product Information

Application	IHC-P, WB, FC,E
Primary Accession	O95999
Reactivity	Human
Host	Mouse
Clonality	Monoclonal
Calculated MW	H=26 KDa
Isotype	IgG1, κ
Antigen Source	HUMAN

BCL10 Antibody - Additional Information**Gene ID** 8915**Antigen Region**
1-143**Other Names**

B-cell lymphoma/leukemia 10, B-cell CLL/lymphoma 10, Bcl-10, CARD-containing molecule enhancing NF-kappa-B, CARD-like apoptotic protein, hCLAP, CED-3/ICH-1 prodomain homologous E10-like regulator, CIPER, Cellular homolog of vCARMEN, cCARMEN, Cellular-E10, c-E10, Mammalian CARD-containing adapter mol

Dilution

IHC-P~~1:25
WB~~1:1000
FC~~1:25

Target/Specificity

This BCL10 antibody is generated from a mouse immunized with a KLH conjugated synthetic peptide between 1-143 amino acids from the human region of human BCL10.

Format

Purified monoclonal antibody supplied in PBS with 0.09% (W/V) sodium azide. This antibody is purified through a protein G column, followed by dialysis against PBS.

Storage

Maintain refrigerated at 2-8°C for up to 2 weeks. For long term storage store at -20°C in small aliquots to prevent freeze-thaw cycles.

Precautions

BCL10 Antibody is for research use only and not for use in diagnostic or therapeutic procedures.

BCL10 Antibody - Protein Information

Name BCL10 {ECO:0000303|PubMed:9989495, ECO:0000312|HGNC:HGNC:989}

Function

Plays a key role in both adaptive and innate immune signaling by bridging CARD domain-containing proteins to immune activation (PubMed:10187770, PubMed:10364242, PubMed:10400625, PubMed:24074955, PubMed:25365219). Acts by channeling adaptive and innate immune signaling downstream of CARD domain-containing proteins CARD9, CARD11 and CARD14 to activate NF-kappa-B and MAP kinase p38 (MAPK11, MAPK12, MAPK13 and/or MAPK14) pathways which stimulate expression of genes encoding pro-inflammatory cytokines and chemokines (PubMed:24074955). Recruited by activated CARD domain-containing proteins: homooligomerized CARD domain-containing proteins form a nucleating helical template that recruits BCL10 via CARD-CARD interaction, thereby promoting polymerization of BCL10, subsequent recruitment of MALT1 and formation of a CBM complex (PubMed:24074955). This leads to activation of NF-kappa-B and MAP kinase p38 (MAPK11, MAPK12, MAPK13 and/or MAPK14) pathways which stimulate expression of genes encoding pro-inflammatory cytokines and chemokines (PubMed:18287044, PubMed:24074955, PubMed:27777308). Activated by CARD9 downstream of C-type lectin receptors; CARD9-mediated signals are essential for antifungal immunity (PubMed:26488816). Activated by CARD11 downstream of T-cell receptor (TCR) and B-cell receptor (BCR) (PubMed:18264101, PubMed:18287044, PubMed:24074955, PubMed:27777308). Promotes apoptosis, pro-caspase-9 maturation and activation of NF-kappa-B via NIK and IKK (PubMed:10187815).

Cellular Location

Cytoplasm, perinuclear region. Membrane raft. Note=Appears to have a perinuclear, compact and filamentous pattern of expression. Also found in the nucleus of several types of tumor cells. Colocalized with DPP4 in membrane rafts.

Tissue Location

Ubiquitous..

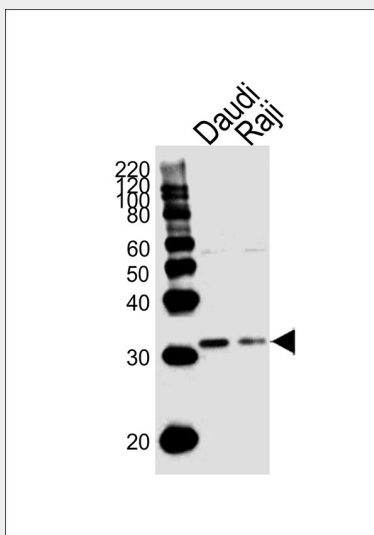
BCL10 Antibody - Protocols

Provided below are standard protocols that you may find useful for product applications.

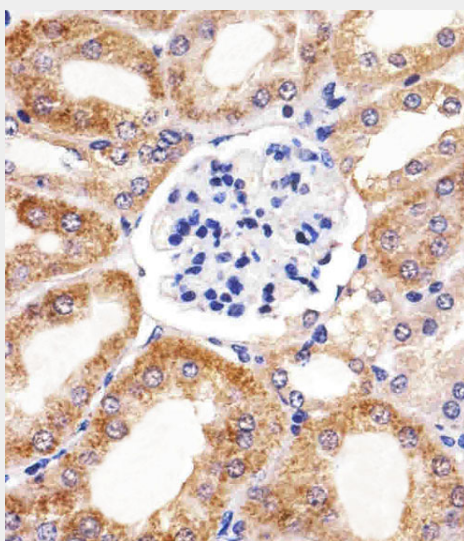
- [Western Blot](#)
- [Blocking Peptides](#)
- [Dot Blot](#)
- [Immunohistochemistry](#)
- [Immunofluorescence](#)
- [Immunoprecipitation](#)

- [Flow Cytometry](#)
- [Cell Culture](#)

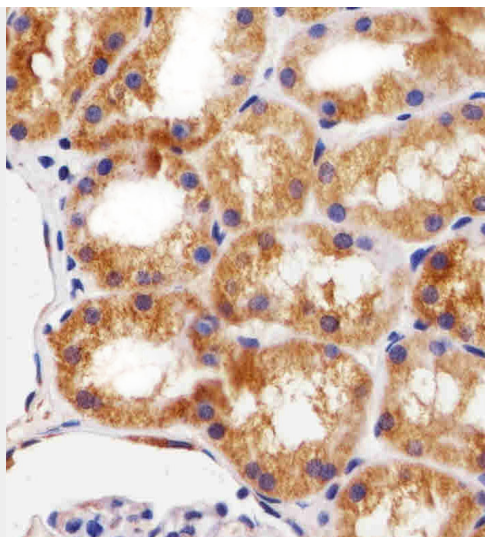
BCL10 Antibody - Images



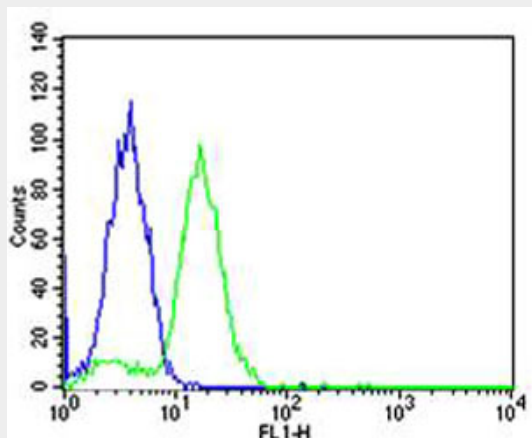
Western blot analysis of lysates from Daudi, Raji cell line (from left to right), using BCL10 Antibody (Cat. #AW5069). AW5069 was diluted at 1:1000 at each lane. A goat anti-mouse IgG H&L (HRP) at 1:10000 dilution was used as the secondary antibody. Lysates at 20 µg per lane.



Immunohistochemical analysis of paraffin-embedded M. kidney section using BCL10 Antibody (Cat#AW5069). AW5069 was diluted at 1:25 dilution. A peroxidase-conjugated goat anti-mouse IgG at 1:400 dilution was used as the secondary antibody, followed by DAB staining.



Immunohistochemical analysis of paraffin-embedded H. kidney section using BCL10 Antibody(Cat#AW5069). AW5069 was diluted at 1:25 dilution. A peroxidase-conjugated goat anti-mouse IgG at 1:400 dilution was used as the secondary antibody, followed by DAB staining.



Flow cytometric analysis of Hela cells using BCL10 Antibody(green, Cat#AW5069) compared to an isotype control of mouse IgG1(blue). AW5069 was diluted at 1:25 dilution. An Alexa Fluor® 488 goat anti-mouse IgG at 1:400 dilution was used as the secondary antibody.

BCL10 Antibody - Background

Promotes apoptosis, pro-caspase-9 maturation and activation of NF-kappa-B via NIK and IKK. May be an adapter protein between upstream TNFR1-TRADD-RIP complex and the downstream NIK-IKK-IKAP complex. Is a substrate for MALT1.

BCL10 Antibody - References

- Willis T.G.,et al.Cell 96:35-45(1999).
- Koseki T.,et al.J. Biol. Chem. 274:9955-9961(1999).
- Thome M.,et al.J. Biol. Chem. 274:9962-9968(1999).
- Yan M.,et al.J. Biol. Chem. 274:10287-10292(1999).
- Srinivasula S.M.,et al.J. Biol. Chem. 274:17946-17954(1999).