

FBXO28 Antibody (C-term)
Affinity Purified Rabbit Polyclonal Antibody (Pab)
Catalog # AW5112**Specification**

FBXO28 Antibody (C-term) - Product Information

Application	WB,E
Primary Accession	Q9NVF7
Other Accession	Q8BIG4 , Q2NL16
Reactivity	Human, Mouse
Predicted	Bovine
Host	Rabbit
Clonality	Polyclonal
Calculated MW	H=41;M=41 KDa
Isotype	Rabbit IgG
Antigen Source	Human

FBXO28 Antibody (C-term) - Additional Information**Gene ID** 23219**Antigen Region**
339-368**Other Names**
F-box only protein 28; KIAA0483; F-box only protein 28**Dilution**
WB~~1:1000**Target/Specificity**
This FBXO28 antibody is generated from rabbits immunized with a KLH conjugated synthetic peptide between 339-368 amino acids from the C-terminal region of human FBXO28.**Format**
Purified polyclonal antibody supplied in PBS with 0.09% (W/V) sodium azide. This antibody is purified through a protein A column, followed by peptide affinity purification.**Storage**
Maintain refrigerated at 2-8°C for up to 2 weeks. For long term storage store at -20°C in small aliquots to prevent freeze-thaw cycles.**Precautions**
FBXO28 Antibody (C-term) is for research use only and not for use in diagnostic or therapeutic procedures.**FBXO28 Antibody (C-term) - Protein Information**

Name FBXO28

Synonyms CENP-30 {ECO:0000303|PubMed:20813266}, K

Function

Probably recognizes and binds to some phosphorylated proteins and promotes their ubiquitination and degradation.

Cellular Location

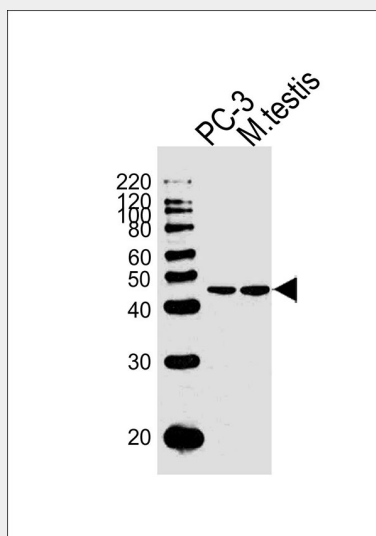
Chromosome, centromere, kinetochore

FBXO28 Antibody (C-term) - Protocols

Provided below are standard protocols that you may find useful for product applications.

- [Western Blot](#)
- [Blocking Peptides](#)
- [Dot Blot](#)
- [Immunohistochemistry](#)
- [Immunofluorescence](#)
- [Immunoprecipitation](#)
- [Flow Cytometry](#)
- [Cell Culture](#)

FBXO28 Antibody (C-term) - Images



Western blot analysis of lysates from mouse brain tissue and MCF-7 cell line (from left to right), using FBXO28 Antibody (C-term)(Cat. #AW5112). AW5112 was diluted at 1:1000 at each lane. A goat anti-rabbit IgG H&L(HRP) at 1:10000 dilution was used as the secondary antibody. Lysates at 20ug per lane.

FBXO28 Antibody (C-term) - Background

Probably recognizes and binds to some phosphorylated proteins and promotes their ubiquitination and degradation (By similarity).

FBXO28 Antibody (C-term) - References

Ota T., et al. Nat. Genet. 36:40-45(2004).
Gregory S.G., et al. Nature 441:315-321(2006).
Seki N., et al. DNA Res. 4:345-349(1997).
Olsen J.V., et al. Cell 127:635-648(2006).
Dephoure N., et al. Proc. Natl. Acad. Sci. U.S.A. 105:10762-10767(2008).