

FAM50A Antibody (C-term)
Affinity Purified Rabbit Polyclonal Antibody (Pab)
Catalog # AW5115**Specification**

FAM50A Antibody (C-term) - Product Information

Application	IF, WB,E
Primary Accession	Q14320
Other Accession	Q9WV03 , Q568K9 , Q4KLV7 , Q2VPH1
Reactivity	Human
Predicted	Xenopus, Zebrafish, Mouse
Host	Rabbit
Clonality	Polyclonal
Calculated MW	H=40;M=40 KDa
Isotype	Rabbit IgG
Antigen Source	Human

FAM50A Antibody (C-term) - Additional Information**Gene ID** 9130**Antigen Region**
311-339**Other Names**

FAM50A;DXS9928E; HXC26; XAP5; Protein FAM50A; Protein FAM50A; Protein HXC-26; Protein FAM50A; Protein XAP-5

Dilution

IF~~1:25

WB~~1:1000

Target/Specificity

This FAM50A antibody is generated from rabbits immunized with a KLH conjugated synthetic peptide between 311-339 amino acids from the C-terminal region of human FAM50A.

Format

Purified polyclonal antibody supplied in PBS with 0.09% (W/V) sodium azide. This antibody is purified through a protein A column, followed by peptide affinity purification.

Storage

Maintain refrigerated at 2-8°C for up to 2 weeks. For long term storage store at -20°C in small aliquots to prevent freeze-thaw cycles.

Precautions

FAM50A Antibody (C-term) is for research use only and not for use in diagnostic or therapeutic procedures.

FAM50A Antibody (C-term) - Protein Information

Name FAM50A

Synonyms DXS9928E, HXC26, XAP5

Function

Probably involved in the regulation of pre-mRNA splicing.

Cellular Location

Nucleus.

Tissue Location

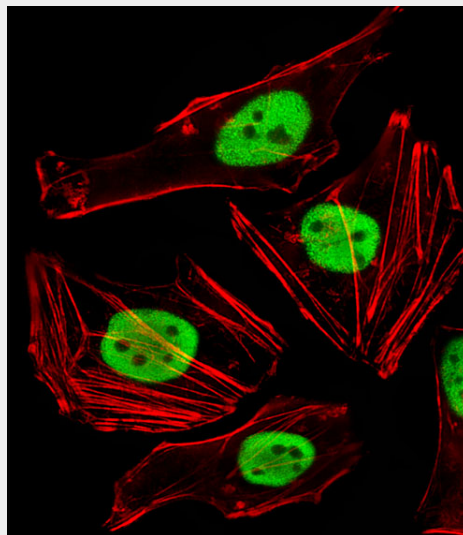
Widely expressed in fetal and adult tissues. Mostly abundant in fetal brain, liver and kidney; in the adult, high levels were also observed in heart, skeletal muscle, spleen, thymus, prostate and small intestine. Expressed in fetal cerebellum and hypothalamus Low expression is observed in fetal temporal lobe (PubMed:32703943)

FAM50A Antibody (C-term) - Protocols

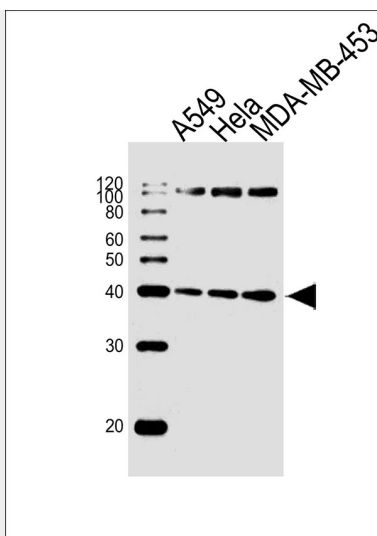
Provided below are standard protocols that you may find useful for product applications.

- [Western Blot](#)
- [Blocking Peptides](#)
- [Dot Blot](#)
- [Immunohistochemistry](#)
- [Immunofluorescence](#)
- [Immunoprecipitation](#)
- [Flow Cytometry](#)
- [Cell Culture](#)

FAM50A Antibody (C-term) - Images



Fluorescent image of HeLa cells stained with FAM50A Antibody (C-term)(Cat#AW5115). AW5115 was diluted at 1:25 dilution. An Alexa Fluor 488-conjugated goat anti-rabbit IgG at 1:400 dilution was used as the secondary antibody (green). Cytoplasmic actin was counterstained with Alexa Fluor® 555 conjugated with Phalloidin (red).



Western blot analysis of lysates from A549, HeLa, MDA-MB-453 cell line (from left to right), using FAM50A Antibody (C-term) (Cat. #AW5115). AW5115 was diluted at 1:1000 at each lane. A goat anti-rabbit IgG H&L (HRP) at 1:10000 dilution was used as the secondary antibody. Lysates at 20 µg per lane.

FAM50A Antibody (C-term) - Background

May be a DNA-binding protein or transcriptional factor.

FAM50A Antibody (C-term) - References

Mazzarella R., et al. Genomics 45:216-219(1997).
Ota T., et al. Nat. Genet. 36:40-45(2004).
Ross M.T., et al. Nature 434:325-337(2005).
Mural R.J., et al. Submitted (SEP-2005) to the EMBL/GenBank/DDBJ databases.
Toyoda A., et al. DNA Res. 3:337-340(1996).