

**ZNF560 Antibody (Center)**  
**Affinity Purified Rabbit Polyclonal Antibody (Pab)**  
**Catalog # AW5120****Specification**

---

**ZNF560 Antibody (Center) - Product Information**

Application	WB,E
Primary Accession	<a href="#">Q96MR9</a>
Reactivity	Human
Host	Rabbit
Clonality	Polyclonal
Calculated MW	H=91 KDa
Isotype	Rabbit IgG
Antigen Source	Human

**ZNF560 Antibody (Center) - Additional Information****Gene ID** 147741**Antigen Region**  
301-325**Other Names**  
ZNF560;Zinc finger protein 560**Dilution**  
WB~~1:1000**Target/Specificity**  
This ZNF560 antibody is generated from rabbits immunized with a KLH conjugated synthetic peptide between 301-325 amino acids from the Central region of human ZNF560.**Format**  
Purified polyclonal antibody supplied in PBS with 0.09% (W/V) sodium azide. This antibody is purified through a protein A column, followed by peptide affinity purification.**Storage**  
Maintain refrigerated at 2-8°C for up to 2 weeks. For long term storage store at -20°C in small aliquots to prevent freeze-thaw cycles.**Precautions**  
ZNF560 Antibody (Center) is for research use only and not for use in diagnostic or therapeutic procedures.**ZNF560 Antibody (Center) - Protein Information****Name** ZNF560



**Function**

May be involved in transcriptional regulation.

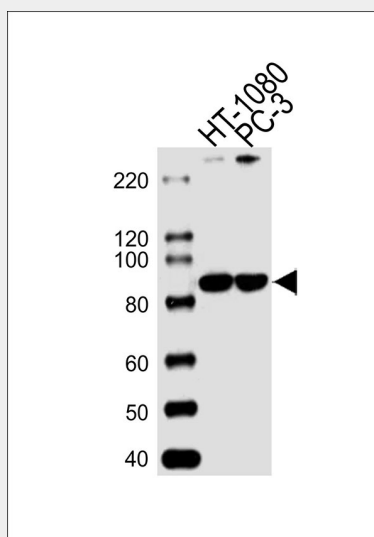
**Cellular Location**

Nucleus.

**ZNF560 Antibody (Center) - Protocols**

Provided below are standard protocols that you may find useful for product applications.

- [Western Blot](#)
- [Blocking Peptides](#)
- [Dot Blot](#)
- [Immunohistochemistry](#)
- [Immunofluorescence](#)
- [Immunoprecipitation](#)
- [Flow Cytometry](#)
- [Cell Culture](#)

**ZNF560 Antibody (Center) - Images**

Western blot analysis of lysates from HT-1080, PC-3 cell line (from left to right), using ZNF560 Antibody (Center) (Cat. #AW5120). AW5120 was diluted at 1:1000 at each lane. A goat anti-rabbit IgG H&L (HRP) at 1:10000 dilution was used as the secondary antibody.

**ZNF560 Antibody (Center) - Background**

May be involved in transcriptional regulation.

**ZNF560 Antibody (Center) - References**

Ota T., et al. Nat. Genet. 36:40-45(2004).  
Sjoeblom T., et al. Science 314:268-274(2006).