

**C21orf33 Antibody (Center)**  
**Purified Rabbit Polyclonal Antibody (Pab)**  
**Catalog # AW5137****Specification**

---

**C21orf33 Antibody (Center) - Product Information**

Application	IF, WB,E
Primary Accession	<a href="#">P30042</a>
Other Accession	<a href="#">P0DPI2</a> , <a href="#">A0A0B4J2D5</a>
Reactivity	Human
Predicted	Mouse, Rat
Host	Rabbit
Clonality	polyclonal
Calculated MW	H=28,25;M=28;Rat=28 KDa
Isotype	Rabbit IgG
Antigen Source	HUMAN

**C21orf33 Antibody (Center) - Additional Information****Antigen Region**

91-124

**Other Names**

ES1 protein homolog, mitochondrial, Protein GT335, Protein KNP-I, C21orf33, HES1, KNPI

**Dilution**

IF~~1:25

WB~~ 1:1000

**Target/Specificity**

This C21orf33 antibody is generated from a rabbit immunized with a KLH conjugated synthetic peptide between 91-124 amino acids from the Central region of human C21orf33.

**Format**

Purified polyclonal antibody supplied in PBS with 0.09% (W/V) sodium azide. This antibody is purified through a protein A column, followed by peptide affinity purification.

**Storage**

Maintain refrigerated at 2-8°C for up to 2 weeks. For long term storage store at -20°C in small aliquots to prevent freeze-thaw cycles.

**Precautions**

C21orf33 Antibody (Center) is for research use only and not for use in diagnostic or therapeutic procedures.

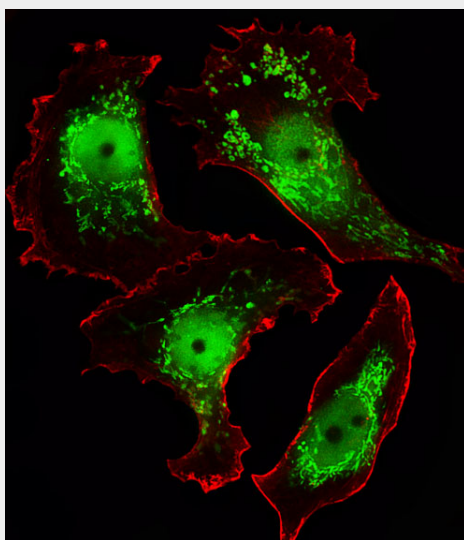
**C21orf33 Antibody (Center) - Protein Information**

## C21orf33 Antibody (Center) - Protocols

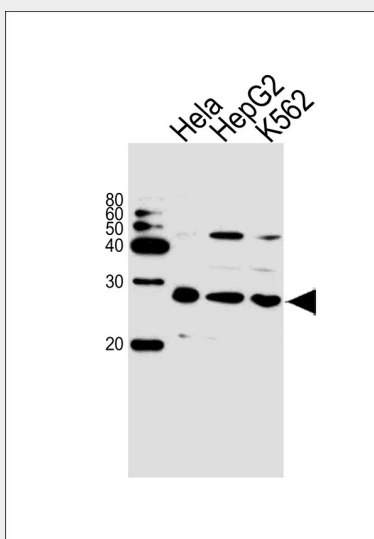
Provided below are standard protocols that you may find useful for product applications.

- [Western Blot](#)
- [Blocking Peptides](#)
- [Dot Blot](#)
- [Immunohistochemistry](#)
- [Immunofluorescence](#)
- [Immunoprecipitation](#)
- [Flow Cytometry](#)
- [Cell Culture](#)

## C21orf33 Antibody (Center) - Images



Fluorescent image of MCF-7 cells stained with C21orf33 Antibody (Center)(Cat#AW5137). AW5137 was diluted at 1:25 dilution. An Alexa Fluor 488-conjugated goat anti-rabbit IgG at 1:400 dilution was used as the secondary antibody (green). Cytoplasmic actin was counterstained with Alexa Fluor® 555 conjugated with Phalloidin (red).



Western blot analysis of lysates from HeLa, HepG2, K562 cell line (from left to right), using

C21orf33 Antibody (Center)(Cat. #AW5137). AW5137 was diluted at 1:1000 at each lane. A goat anti-rabbit IgG H&L(HRP) at 1:10000 dilution was used as the secondary antibody.

**C21orf33 Antibody (Center) - References**

Nagamine K.,et al.Biochem. Biophys. Res. Commun. 225:608-616(1996).  
Lafreniere R.G.,et al.Genomics 38:264-272(1996).  
Scott H.S.,et al.Hum. Genet. 99:616-623(1997).  
Hattori M.,et al.Nature 405:311-319(2000).  
Nagamine K.,et al.Genomics 42:528-531(1997).