

**ALDOC Antibody (C-term)**  
**Purified Rabbit Polyclonal Antibody (Pab)**  
**Catalog # AW5145**

**Specification**

---

**ALDOC Antibody (C-term) - Product Information**

|                   |  |
|-------------------|--|
| Application       | IHC-P, WB,E  |
| Primary Accession | <a href="#">P09972</a>   |
| Other Accession   | <a href="#">P09117</a> , <a href="#">P05063</a> , <a href="#">Q9GKW3</a> |
| Reactivity        | Human, Mouse, Rat  |
| Predicted         | Monkey   |
| Host              | Rabbit   |
| Clonality         | Polyclonal   |
| Calculated MW     | H=39;M=39;Rat=39 KDa   |
| Isotype           | Rabbit IgG   |
| Antigen Source    | HUMAN  |

**ALDOC Antibody (C-term) - Additional Information**

**Gene ID** 230

**Antigen Region**  
300-333

**Other Names**  
ALDOC; ALDC; Fructose-bisphosphate aldolase C; Brain-type aldolase

**Dilution**  
IHC-P~~1:10~50  
WB~~1:1000

**Target/Specificity**  
This ALDOC antibody is generated from rabbits immunized with a KLH conjugated synthetic peptide between 300-333 amino acids from the C-terminal region of human ALDOC.

**Format**  
Purified polyclonal antibody supplied in PBS with 0.09% (W/V) sodium azide. This antibody is prepared by Saturated Ammonium Sulfate (SAS) precipitation followed by dialysis against PBS.

**Storage**  
Maintain refrigerated at 2-8°C for up to 2 weeks. For long term storage store at -20°C in small aliquots to prevent freeze-thaw cycles.

**Precautions**  
ALDOC Antibody (C-term) is for research use only and not for use in diagnostic or therapeutic procedures.

**ALDOC Antibody (C-term) - Protein Information**

**Name** ALDOC ([HGNC:418](#))

**Synonyms** ALDC

**Function**

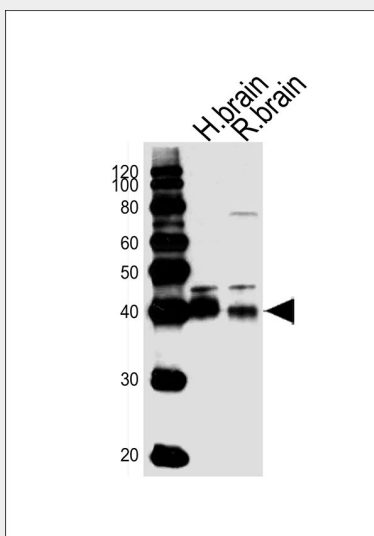
Catalyzes the reversible conversion of beta-D-fructose 1,6- biphosphate (FBP) into two triose phosphate and plays a key role in glycolysis and gluconeogenesis.

**ALDOC Antibody (C-term) - Protocols**

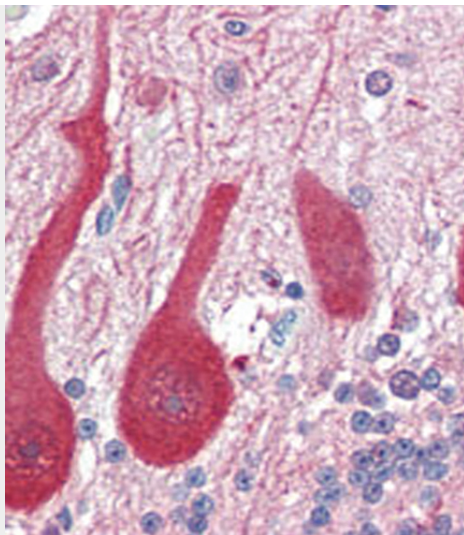
Provided below are standard protocols that you may find useful for product applications.

- [Western Blot](#)
- [Blocking Peptides](#)
- [Dot Blot](#)
- [Immunohistochemistry](#)
- [Immunofluorescence](#)
- [Immunoprecipitation](#)
- [Flow Cytometry](#)
- [Cell Culture](#)

**ALDOC Antibody (C-term) - Images**



Western blot analysis of lysates from human brain, rat brain, mouse cerebellum tissue lysate (from left to right), using ALDOC Antibody (C-term)(Cat. #AW5145). AW5145 was diluted at 1:1000 at each lane. A goat anti-rabbit IgG H&L(HRP) at 1:10000 dilution was used as the secondary antibody. Lysates at 20ug per lane.



Formalin-fixed and paraffin-embedded human Brain, Cerebellum tissue reacted with ALDOC antibody (C-term) (Cat.#AW5145), which was peroxidase-conjugated to the secondary antibody, followed by AEC staining. This data demonstrates the use of this antibody for immunohistochemistry; clinical relevance has not been evaluated.

#### **ALDOC Antibody (C-term) - Background**

ALDOC is a member of the fructose-biphosphate aldolase protein family. Expressed specifically in the hippocampus and Purkinje cells of the brain, this protein is a glycolytic enzyme that catalyzes the reversible aldol cleavage of fructose-1,6-biphosphate and fructose 1-phosphate to dihydroxyacetone phosphate and either glyceraldehyde-3-phosphate or glyceraldehyde, respectively.

#### **ALDOC Antibody (C-term) - References**

- Buono,P.,FEBS Lett. 578 (3), 337-344 (2004)
- Buono,P.,Nucleic Acids Res. 16 (10), 4733 (1988)
- Rottmann,W.H.,Proc. Natl. Acad. Sci. U.S.A. 56 (4), 1275-1282 (1966)