

ARHGDIA Antibody (N-term)
Affinity Purified Rabbit Polyclonal Antibody (Pab)
Catalog # AW5149

Specification

ARHGDIA Antibody (N-term) - Product Information

Application	IHC-P, WB,E
Primary Accession	P52565
Other Accession	Q5XI73 , Q99PT1 , Q4R4J0 , P19803
Reactivity	Human, Mouse
Predicted	Bovine, Monkey, Rat
Host	Rabbit
Clonality	Polyclonal
Calculated MW	H=23;M=23;Rat=23 KDa
Isotype	Rabbit IgG
Antigen Source	HUMAN

ARHGDIA Antibody (N-term) - Additional Information

Gene ID 396

Antigen Region
25-53

Other Names
ARHGDIA; GDIA1; Rho GDP-dissociation inhibitor 1; Rho-GDI alpha

Dilution
IHC-P~~1:25
WB~~1:1000

Target/Specificity
This ARHGDIA antibody is generated from rabbits immunized with a KLH conjugated synthetic peptide between 25-53 amino acids from the N-terminal region of human ARHGDIA.

Format
Purified polyclonal antibody supplied in PBS with 0.09% (W/V) sodium azide. This antibody is purified through a protein A column, followed by peptide affinity purification.

Storage
Maintain refrigerated at 2-8°C for up to 2 weeks. For long term storage store at -20°C in small aliquots to prevent freeze-thaw cycles.

Precautions
ARHGDIA Antibody (N-term) is for research use only and not for use in diagnostic or therapeutic procedures.

ARHGDIA Antibody (N-term) - Protein Information

Name ARHGDIA

Synonyms GDIA1

Function

Controls Rho proteins homeostasis. Regulates the GDP/GTP exchange reaction of the Rho proteins by inhibiting the dissociation of GDP from them, and the subsequent binding of GTP to them. Retains Rho proteins such as CDC42, RAC1 and RHOA in an inactive cytosolic pool, regulating their stability and protecting them from degradation. Actively involved in the recycling and distribution of activated Rho GTPases in the cell, mediates extraction from membranes of both inactive and activated molecules due its exceptionally high affinity for prenylated forms. Through the modulation of Rho proteins, may play a role in cell motility regulation. In glioma cells, inhibits cell migration and invasion by mediating the signals of SEMA5A and PLXNB3 that lead to inactivation of RAC1.

Cellular Location

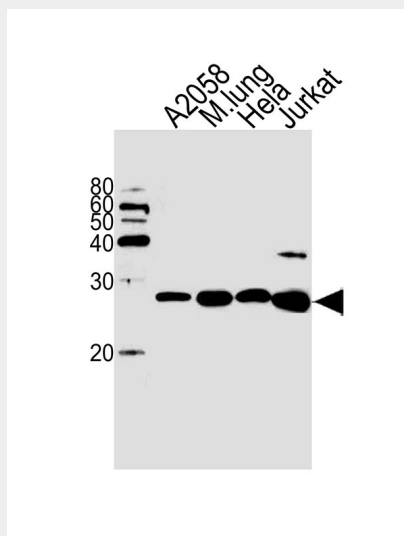
Cytoplasm.

ARHGDIA Antibody (N-term) - Protocols

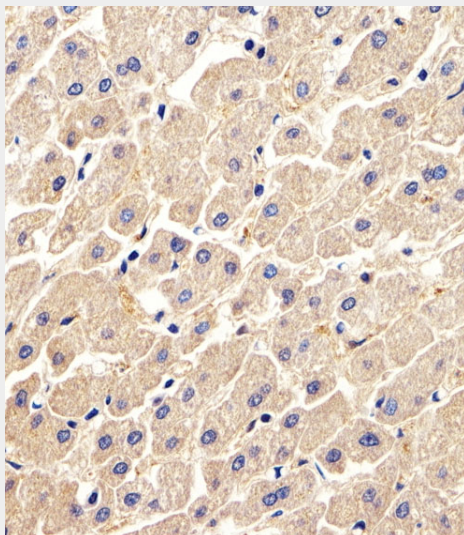
Provided below are standard protocols that you may find useful for product applications.

- [Western Blot](#)
- [Blocking Peptides](#)
- [Dot Blot](#)
- [Immunohistochemistry](#)
- [Immunofluorescence](#)
- [Immunoprecipitation](#)
- [Flow Cytometry](#)
- [Cell Culture](#)

ARHGDIA Antibody (N-term) - Images



Western blot analysis of lysates from A2058 cell line, mouse lung tissue, Hela, Jurkat cell line (from left to right), using ARHGDIA Antibody (N-term) (Cat. #AW5149). AW5149 was diluted at 1:1000 at each lane. A goat anti-rabbit IgG H&L (HRP) at 1:10000 dilution was used as the secondary antibody. Lysates at 20ug per lane.



Immunohistochemical analysis of paraffin-embedded H.liver section using ARHGDIA Antibody (N-term)(Cat#AW5149). AW5149 was diluted at 1:25 dilution. A peroxidase-conjugated goat anti-rabbit IgG at 1:400 dilution was used as the secondary antibody, followed by DAB staining.

ARHGDIA Antibody (N-term) - Background

ARHGDIA belong to the RAS gene superfamily encoding small guanine nucleotide exchange (GTP/GDP) factors. The ARH proteins may be kept in the inactive, GDP-bound state by interaction with GDP dissociation inhibitors, such as ARHGDIA

ARHGDIA Antibody (N-term) - References

Qiao,J., etc, Am. J. Physiol., Cell Physiol. 295 (5), C1161-C1168 (2008)