

OLR1 Antibody (Center)
Affinity Purified Rabbit Polyclonal Antibody (Pab)
Catalog # AW5181**Specification**

OLR1 Antibody (Center) - Product Information

Application	WB,E
Primary Accession	P78380
Reactivity	Human
Host	Rabbit
Clonality	Polyclonal
Calculated MW	H=31,20,21 KDa
Isotype	Rabbit IgG
Antigen Source	HUMAN

OLR1 Antibody (Center) - Additional Information**Gene ID** 4973**Antigen Region**
64-92**Other Names**

OLR1; CLEC8A; LOX1; Oxidized low-density lipoprotein receptor 1; C-type lectin domain family 8 member A; Lectin-like oxidized LDL receptor 1; Lectin-type oxidized LDL receptor 1; Oxidized low-density lipoprotein receptor 1, soluble form

Dilution

WB~~1:1000

Target/Specificity

This OLR1 antibody is generated from rabbits immunized with a KLH conjugated synthetic peptide between 64-92 amino acids from the Central region of human OLR1.

Format

Purified polyclonal antibody supplied in PBS with 0.09% (W/V) sodium azide. This antibody is purified through a protein A column, followed by peptide affinity purification.

Storage

Maintain refrigerated at 2-8°C for up to 2 weeks. For long term storage store at -20°C in small aliquots to prevent freeze-thaw cycles.

Precautions

OLR1 Antibody (Center) is for research use only and not for use in diagnostic or therapeutic procedures.

OLR1 Antibody (Center) - Protein Information

Name OLR1

Synonyms CLEC8A, LOX1

Function

Receptor that mediates the recognition, internalization and degradation of oxidatively modified low density lipoprotein (oxLDL) by vascular endothelial cells. OxLDL is a marker of atherosclerosis that induces vascular endothelial cell activation and dysfunction, resulting in pro-inflammatory responses, pro-oxidative conditions and apoptosis. Its association with oxLDL induces the activation of NF-kappa-B through an increased production of intracellular reactive oxygen and a variety of pro-atherogenic cellular responses including a reduction of nitric oxide (NO) release, monocyte adhesion and apoptosis. In addition to binding oxLDL, it acts as a receptor for the HSP70 protein involved in antigen cross-presentation to naive T-cells in dendritic cells, thereby participating in cell-mediated antigen cross-presentation. Also involved in inflammatory process, by acting as a leukocyte-adhesion molecule at the vascular interface in endotoxin-induced inflammation. Also acts as a receptor for advanced glycation end (AGE) products, activated platelets, monocytes, apoptotic cells and both Gram-negative and Gram-positive bacteria.

Cellular Location

Cell membrane; Lipid-anchor. Cell membrane; Single-pass type II membrane protein. Membrane raft. Secreted. Note=A secreted form also exists. Localization to membrane rafts requires palmitoylation

Tissue Location

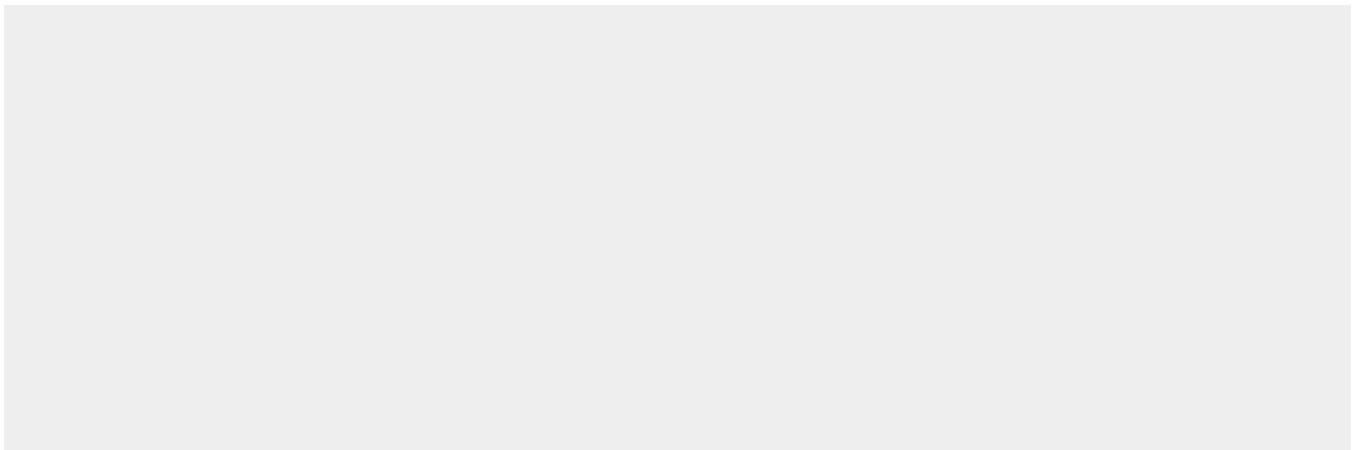
Expressed at high level in endothelial cells and vascular-rich organs such as placenta, lung, liver and brain, aortic intima, bone marrow, spinal cord and substantia nigra. Also expressed at the surface of dendritic cells. Widely expressed at intermediate and low level.

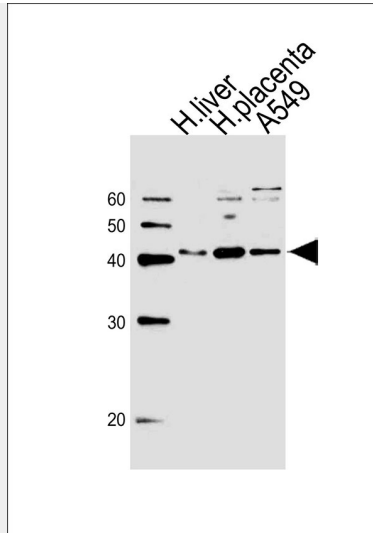
OLR1 Antibody (Center) - Protocols

Provided below are standard protocols that you may find useful for product applications.

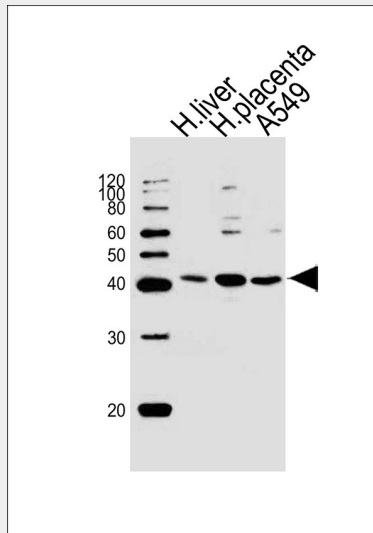
- [Western Blot](#)
- [Blocking Peptides](#)
- [Dot Blot](#)
- [Immunohistochemistry](#)
- [Immunofluorescence](#)
- [Immunoprecipitation](#)
- [Flow Cytometry](#)
- [Cell Culture](#)

OLR1 Antibody (Center) - Images





Western blot analysis of lysates from human liver, human placenta tissue, A549 cell line (from left to right), using OLR1 Antibody (Center) (Cat. #AW5181). AW5181 was diluted at 1:1000 at each lane. A goat anti-rabbit IgG H&L (HRP) at 1:10000 dilution was used as the secondary antibody.



Western blot analysis of lysates from human liver, human placenta tissue, A549 cell line (from left to right), using OLR1 Antibody (Center) (Cat. #AW5181). AW5181 was diluted at 1:1000 at each lane. A goat anti-rabbit IgG H&L (HRP) at 1:10000 dilution was used as the secondary antibody.

OLR1 Antibody (Center) - Background

OLR1 is a low density lipoprotein receptor that belongs to the C-type lectin superfamily. This protein binds, internalizes and degrades oxidized low-density lipoprotein. This protein may be involved in the regulation of Fas-induced apoptosis. This protein may play a role as a scavenger receptor.

OLR1 Antibody (Center) - References

Predazzi, I.M., et al., *Ann. Hum. Biol.* 37 (2), 136-148 (2010)