

**NPIPL2 Antibody (C-term)**  
**Affinity Purified Rabbit Polyclonal Antibody (Pab)**  
**Catalog # AW5185**

**Specification**

---

**NPIPL2 Antibody (C-term) - Product Information**

Application	WB,E
Primary Accession	<a href="#">A6NHN6</a>
Reactivity	Human
Host	Rabbit
Clonality	Polyclonal
Calculated MW	H=51 KDa
Isotype	Rabbit IgG
Antigen Source	Human

**NPIPL2 Antibody (C-term) - Additional Information**

**Gene ID** 440348

**Antigen Region**  
300-327

**Other Names**  
NPIPL2;Nuclear pore complex-interacting protein-like 2

**Dilution**  
WB~~ 1:1000

**Target/Specificity**  
This NPIPL2 antibody is generated from rabbits immunized with a KLH conjugated synthetic peptide between 300-327 amino acids from the C-terminal region of human NPIPL2.

**Format**  
Purified polyclonal antibody supplied in PBS with 0.09% (W/V) sodium azide. This antibody is purified through a protein A column, followed by peptide affinity purification.

**Storage**  
Maintain refrigerated at 2-8°C for up to 2 weeks. For long term storage store at -20°C in small aliquots to prevent freeze-thaw cycles.

**Precautions**  
NPIPL2 Antibody (C-term) is for research use only and not for use in diagnostic or therapeutic procedures.

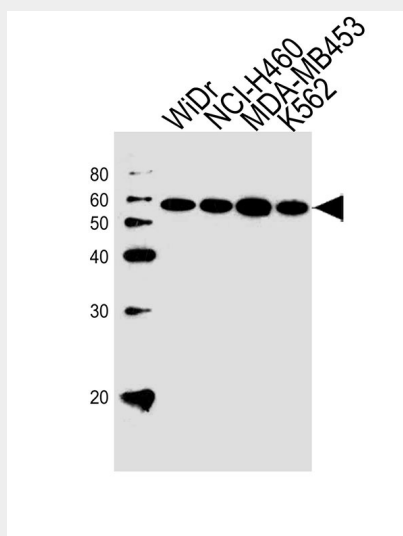
**NPIPL2 Antibody (C-term) - Protein Information**

**Name** NPIP15

**Synonyms** NPIPL2**Cellular Location**  
Secreted.**NPIPL2 Antibody (C-term) - Protocols**

Provided below are standard protocols that you may find useful for product applications.

- [Western Blot](#)
- [Blocking Peptides](#)
- [Dot Blot](#)
- [Immunohistochemistry](#)
- [Immunofluorescence](#)
- [Immunoprecipitation](#)
- [Flow Cytometry](#)
- [Cell Culture](#)

**NPIPL2 Antibody (C-term) - Images**

Western blot analysis of lysates from WiDr, NCI-H460, MDA-MB453, K562 cell line (from left to right), using NPIPL2 Antibody (C-term) (Cat. #AW5185). AW5185 was diluted at 1:1000 at each lane. A goat anti-rabbit IgG H&L(HRP) at 1:10000 dilution was used as the secondary antibody.

**NPIPL2 Antibody (C-term) - Background**

The function of this protein is unknown.

**NPIPL2 Antibody (C-term) - References**

Martin J., et al. Nature 432:988-994(2004).