

TUFM Antibody (N-term)
Purified Rabbit Polyclonal Antibody (Pab)
Catalog # AW5218**Specification**

TUFM Antibody (N-term) - Product Information

Application	IF, WB,E
Primary Accession	P49411
Other Accession	P85834 , Q8BFR5 , P49410
Reactivity	Human, Mouse, Rat
Predicted	Bovine
Host	Rabbit
Clonality	polyclonal
Calculated MW	H=50;M=50,47;Rat=50 KDa
Isotype	Rabbit IgG
Antigen Source	HUMAN

TUFM Antibody (N-term) - Additional Information**Gene ID** 7284**Antigen Region**
112-147**Other Names**
Elongation factor Tu, mitochondrial, EF-Tu, P43, TUFM**Dilution**
IF~~1:25
WB~~1:2000**Target/Specificity**
This TUFM antibody is generated from a rabbit immunized with a KLH conjugated synthetic peptide between 112-147 amino acids from the N-terminal region of human TUFM.**Format**
Purified polyclonal antibody supplied in PBS with 0.09% (W/V) sodium azide. This antibody is purified through a protein A column, followed by peptide affinity purification.**Storage**
Maintain refrigerated at 2-8°C for up to 2 weeks. For long term storage store at -20°C in small aliquots to prevent freeze-thaw cycles.**Precautions**
TUFM Antibody (N-term) is for research use only and not for use in diagnostic or therapeutic procedures.**TUFM Antibody (N-term) - Protein Information**

Name TUFM**Function**

GTP hydrolase that promotes the GTP-dependent binding of aminoacyl-tRNA to the A-site of ribosomes during protein biosynthesis. Also plays a role in the regulation of autophagy and innate immunity. Recruits ATG5-ATG12 and NLRX1 at mitochondria and serves as a checkpoint of the RIGI-MAVS pathway. In turn, inhibits RLR-mediated type I interferon while promoting autophagy.

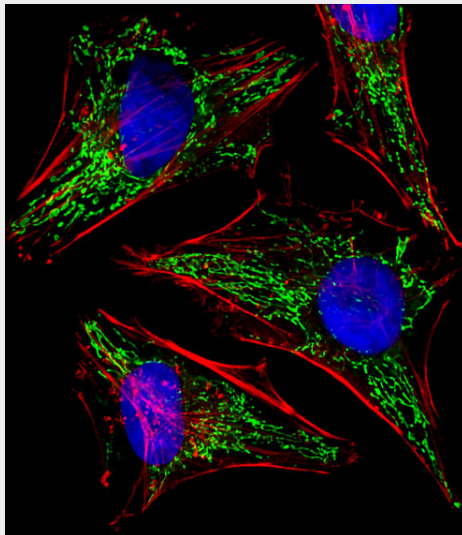
Cellular Location

Mitochondrion.

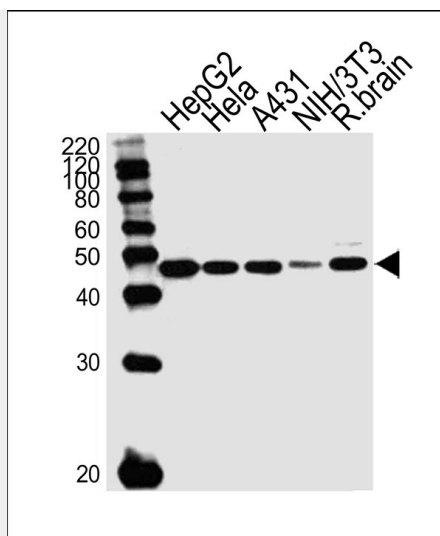
TUFM Antibody (N-term) - Protocols

Provided below are standard protocols that you may find useful for product applications.

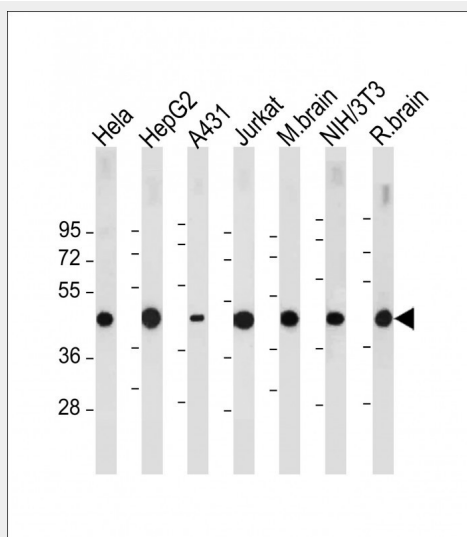
- [Western Blot](#)
- [Blocking Peptides](#)
- [Dot Blot](#)
- [Immunohistochemistry](#)
- [Immunofluorescence](#)
- [Immunoprecipitation](#)
- [Flow Cytometry](#)
- [Cell Culture](#)

TUFM Antibody (N-term) - Images

Fluorescent image of HeLa cells stained with TUFM Antibody (N-term)(Cat#AW5218). AW5218 was diluted at 1:25 dilution. An Alexa Fluor 488-conjugated goat anti-rabbit IgG at 1:400 dilution was used as the secondary antibody (green). DAPI was used to stain the cell nuclear (blue). Cytoplasmic actin was counterstained with Alexa Fluor® 555 conjugated with Phalloidin (red).



Western blot analysis of lysates from HepG2, Hela, A431, mouse NIH/3T3 cell line, rat brain tissue lysate (from left to right), using TUFM Antibody (N-term) (Cat. #AW5218). AW5218 was diluted at 1:1000 at each lane. A goat anti-rabbit IgG H&L (HRP) at 1:10000 dilution was used as the secondary antibody.



All lanes : Anti-TUFM Antibody (N-term) at 1:2000 dilution Lane 1: Hela whole cell lysate Lane 2: HepG2 whole cell lysate Lane 3: A431 whole cell lysate Lane 4: Jurkat whole cell lysate Lane 5: Mouse brain tissue lysate Lane 6: NIH/3T3 whole cell lysate Lane 7: Rat brain tissue lysate Lysates/proteins at 20 µg per lane. Secondary Goat Anti-Rabbit IgG, (H+L), Peroxidase conjugated at 1/10000 dilution. Predicted band size : 50 kDa Blocking/Dilution buffer: 5% NFDM/TBST.

TUFM Antibody (N-term) - Background

This protein promotes the GTP-dependent binding of aminoacyl-tRNA to the A-site of ribosomes during protein biosynthesis.

TUFM Antibody (N-term) - References

Worix V.L., et al. Biochim. Biophys. Acta 1264:347-356(1995).
Wells J., et al. FEBS Lett. 358:119-125(1995).
Ling M., et al. Gene 197:325-336(1997).
Martin J., et al. Nature 432:988-994(2004).

Dunn M.J.,et al.Submitted (MAR-1996) to UniProtKB.