

APOD Antibody (N-term)
Purified Rabbit Polyclonal Antibody (Pab)
Catalog # AW5226**Specification**

APOD Antibody (N-term) - Product Information

Application	WB,E
Primary Accession	P05090
Other Accession	P23593 , P37153 , P51910
Reactivity	Human, Mouse
Predicted	Rabbit, Rat
Host	Rabbit
Clonality	Polyclonal
Calculated MW	H=21;M=22;Rat=22 KDa
Isotype	Rabbit IgG
Antigen Source	HUMAN

APOD Antibody (N-term) - Additional Information**Gene ID** 347**Antigen Region**
26-53**Other Names**
APOD; Apolipoprotein D**Dilution**
WB~~1:1000**Target/Specificity**

This APOD antibody is generated from rabbits immunized with a KLH conjugated synthetic peptide between 26-53 amino acids from the N-terminal region of human APOD.

Format

Purified polyclonal antibody supplied in PBS with 0.09% (W/V) sodium azide. This antibody is prepared by Saturated Ammonium Sulfate (SAS) precipitation followed by dialysis against PBS.

Storage

Maintain refrigerated at 2-8°C for up to 2 weeks. For long term storage store at -20°C in small aliquots to prevent freeze-thaw cycles.

Precautions

APOD Antibody (N-term) is for research use only and not for use in diagnostic or therapeutic procedures.

APOD Antibody (N-term) - Protein Information

Name APOD**Function**

APOD occurs in the macromolecular complex with lecithin- cholesterol acyltransferase. It is probably involved in the transport and binding of bilin. Appears to be able to transport a variety of ligands in a number of different contexts.

Cellular Location

Secreted.

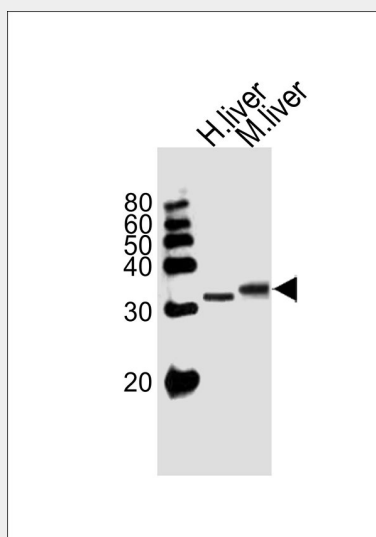
Tissue Location

Expressed in liver, intestine, pancreas, kidney, placenta, adrenal, spleen, fetal brain tissue and tears

APOD Antibody (N-term) - Protocols

Provided below are standard protocols that you may find useful for product applications.

- [Western Blot](#)
- [Blocking Peptides](#)
- [Dot Blot](#)
- [Immunohistochemistry](#)
- [Immunofluorescence](#)
- [Immunoprecipitation](#)
- [Flow Cytometry](#)
- [Cell Culture](#)

APOD Antibody (N-term) - Images

Western blot analysis of lysates from human liver, mouse liver tissue lysate (from left to right), using APOD Antibody (N-term) (Cat. #AW5226). AW5226 was diluted at 1:1000 at each lane. A goat anti-rabbit IgG H&L (HRP) at 1:10000 dilution was used as the secondary antibody.

APOD Antibody (N-term) - Background

APOD is a component of high density lipoprotein that has no marked similarity to other apolipoprotein sequences. It has a high degree of homology to plasma retinol-binding protein and

other members of the alpha 2 microglobulin protein superfamily of carrier proteins, also known as lipocalins. This glycoprotein is closely associated with the enzyme lecithin:cholesterol acyltransferase - an enzyme involved in lipoprotein metabolism.

APOD Antibody (N-term) - References

Do Carmo,S., J. Neurosci. 28 (41), 10330-10338 (2008)
Chen,Y., Brain Res. 1233, 196-202 (2008)
Wei,Y.J., Biomarkers 13 (5), 535-548 (2008)