

**ITGB2 Antibody**  
**Mouse Monoclonal Antibody (Mab)**  
**Catalog # AW5254**

**Specification**

---

**ITGB2 Antibody - Product Information**

Application	<b>WB, IHC-P,E</b>
Primary Accession	<a href="#">P05107</a>
Other Accession	<a href="#">NP_000202.2</a>
Reactivity	<b>Human</b>
Host	<b>Mouse</b>
Clonality	<b>Monoclonal</b>
Calculated MW	<b>H=85 KDa</b>
Isotype	<b>IgG1</b>
Antigen Source	<b>HUMAN</b>

**ITGB2 Antibody - Additional Information**

**Gene ID** 3689

**Antigen Region**  
39-392

**Other Names**

ITGB2; CD18; MFI7; Integrin beta-2; Cell surface adhesion glycoproteins LFA-1/CR3/p150, 95 subunit beta; Complement receptor C3 subunit beta; CD\_antigen=CD18; Flags: Precursor

**Dilution**

WB~~ 1:1000

IHC-P~~1:25

**Target/Specificity**

Purified His-tagged ITGB2 protein(Fragment) was used to produced this monoclonal antibody.

**Format**

Purified monoclonal antibody supplied in PBS with 0.09% (W/V) sodium azide. This antibody is purified through a protein G column, followed by dialysis against PBS.

**Storage**

Maintain refrigerated at 2-8°C for up to 2 weeks. For long term storage store at -20°C in small aliquots to prevent freeze-thaw cycles.

**Precautions**

ITGB2 Antibody is for research use only and not for use in diagnostic or therapeutic procedures.

**ITGB2 Antibody - Protein Information**

**Name** ITGB2

## Synonyms CD18, MFI7

### Function

Integrin ITGAL/ITGB2 is a receptor for ICAM1, ICAM2, ICAM3 and ICAM4. Integrin ITGAL/ITGB2 is also a receptor for the secreted form of ubiquitin-like protein ISG15; the interaction is mediated by ITGAL (PubMed: [29100055](http://www.uniprot.org/citations/29100055)). Integrins ITGAM/ITGB2 and ITGAX/ITGB2 are receptors for the iC3b fragment of the third complement component and for fibrinogen. Integrin ITGAX/ITGB2 recognizes the sequence G-P-R in fibrinogen alpha-chain. Integrin ITGAM/ITGB2 recognizes P1 and P2 peptides of fibrinogen gamma chain. Integrin ITGAM/ITGB2 is also a receptor for factor X. Integrin ITGAD/ITGB2 is a receptor for ICAM3 and VCAM1. Contributes to natural killer cell cytotoxicity (PubMed: [15356110](http://www.uniprot.org/citations/15356110)). Involved in leukocyte adhesion and transmigration of leukocytes including T-cells and neutrophils (PubMed: [11812992](http://www.uniprot.org/citations/11812992)), PubMed: [28807980](http://www.uniprot.org/citations/28807980)). Triggers neutrophil transmigration during lung injury through PTK2B/PYK2-mediated activation (PubMed: [18587400](http://www.uniprot.org/citations/18587400)). Integrin ITGAL/ITGB2 in association with ICAM3, contributes to apoptotic neutrophil phagocytosis by macrophages (PubMed: [23775590](http://www.uniprot.org/citations/23775590)). In association with alpha subunit ITGAM/CD11b, required for CD177-PRTN3- mediated activation of TNF primed neutrophils (PubMed: [21193407](http://www.uniprot.org/citations/21193407)).

### Cellular Location

Cell membrane; Single-pass type I membrane protein. Membrane raft; Single-pass type I membrane protein

### Tissue Location

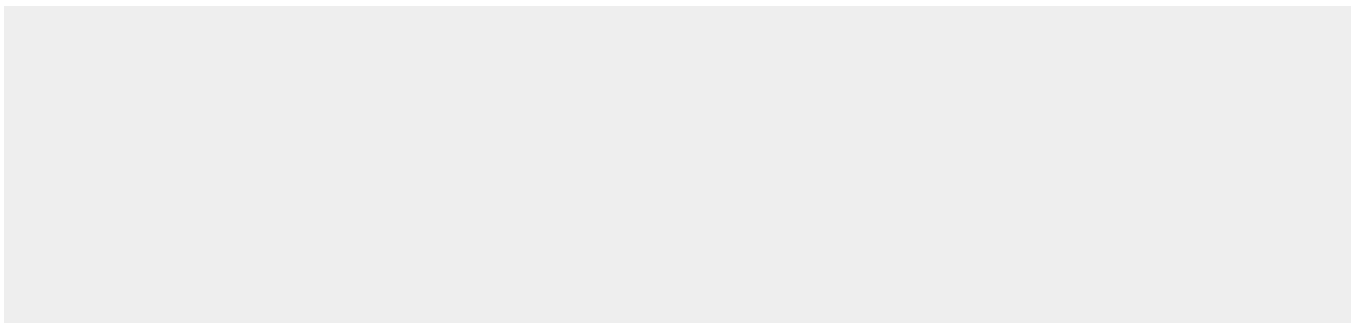
Leukocytes (PubMed:23775590). Expressed in neutrophils (at protein level) (PubMed:21193407, PubMed:28807980)

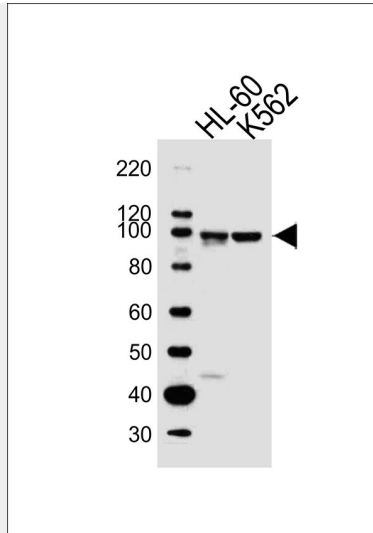
## ITGB2 Antibody - Protocols

Provided below are standard protocols that you may find useful for product applications.

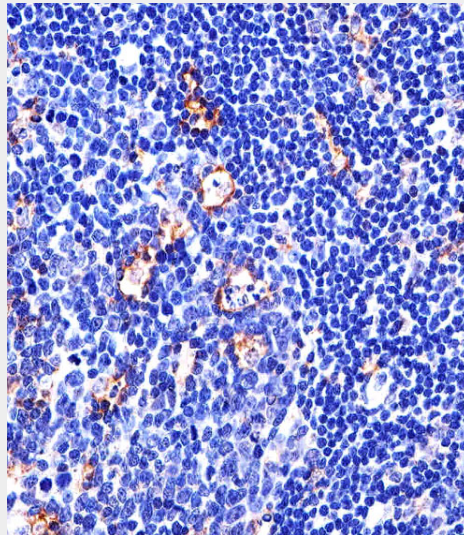
- [Western Blot](#)
- [Blocking Peptides](#)
- [Dot Blot](#)
- [Immunohistochemistry](#)
- [Immunofluorescence](#)
- [Immunoprecipitation](#)
- [Flow Cytometry](#)
- [Cell Culture](#)

## ITGB2 Antibody - Images





Western blot analysis of lysates from HL-60, K562 cell line (from left to right), using ITGB2 Antibody (Cat. #AW5254). AW5254 was diluted at 1:1000 at each lane. A goat anti-mouse IgG H&L (HRP) at 1:10000 dilution was used as the secondary antibody.



Immunohistochemical analysis of paraffin-embedded H. tonsil section using ITGB2 Antibody (Cat#AW5254). AW5254 was diluted at 1:25 dilution. An undiluted biotinylated goat polyvalent antibody was used as the secondary, followed by DAB staining.

### ITGB2 Antibody - Background

The product of this gene belongs to the integrin beta chain family of proteins. Integrins are integral cell-surface proteins composed of an alpha chain and a beta chain. This gene encodes the integrin beta chain beta 2. A given chain may combine with multiple partners resulting in different integrins. For example, beta 2 combines with the alpha L chain to form the integrin LFA-1, and combines with the alpha M chain to form the integrin Mac-1. Integrins are known to participate in cell adhesion as well as cell-surface mediated signalling. Defects in this gene are the cause of leukocyte adhesion deficiency type I (LAD1). Two transcript variants encoding the same protein have been identified for this gene.

## ITGB2 Antibody - References

Gjelstrup, L.C., et al. J. Immunol. 185(7):4154-4168(2010)

Shimada, M., et al. Hum. Genet. 128(4):433-441(2010)

Bailey, S.D., et al. Diabetes Care 33(10):2250-2253(2010)

Chen, X., et al. Proc. Natl. Acad. Sci. U.S.A. 107(33):14727-14732(2010)

Pliyev, B.K., et al. Biochem. Biophys. Res. Commun. 397(2):277-282(2010)

## ITGB2 Antibody - Citations

- [Differential miRNA expression profiles in human keratinocytes in response to protein kinase C inhibitor.](#)