

**C1GALT1 Antibody (Center)**  
**Affinity Purified Rabbit Polyclonal Antibody (Pab)**  
**Catalog # AW5281**

**Specification**

---

**C1GALT1 Antibody (Center) - Product Information**

Application	WB,E
Primary Accession	<a href="#">Q9NS00</a>
Reactivity	Human
Predicted	Rat
Host	Rabbit
Clonality	Polyclonal
Calculated MW	H=42,36;M=42;Rat=42 KDa
Isotype	Rabbit IgG
Antigen Source	Human

**C1GALT1 Antibody (Center) - Additional Information**

**Gene ID** 56913

**Antigen Region**  
115-144

**Other Names**

Glycoprotein-N-acetylgalactosamine 3-beta-galactosyltransferase 1; Glycoprotein-N-acetylgalactosamine 3-beta-galactosyltransferase 1; Glycoprotein-N-acetylgalactosamine 3-beta-galactosyltransferase 1; B3Gal-T8; Glycoprotein-N-acetylgalactosamine 3-beta-galactosyltransferase 1; Core 1 O-glycan T-synthase; Glycoprotein-N-acetylgalactosamine 3-beta-galactosyltransferase 1; Core 1 UDP-galactose:N-acetylgalactosamine-alpha-R beta 1, 3-galactosyltransferase 1; Glycoprotein-N-acetylgalactosamine 3-beta-galactosyltransferase 1; Core 1 beta1, 3-galactosyltransferase 1

**Dilution**

WB~~1:1000

**Target/Specificity**

This C1GALT1 antibody is generated from rabbits immunized with a KLH conjugated synthetic peptide between 115-144 amino acids from the Central region of human C1GALT1.

**Format**

Purified polyclonal antibody supplied in PBS with 0.09% (W/V) sodium azide. This antibody is purified through a protein A column, followed by peptide affinity purification.

**Storage**

Maintain refrigerated at 2-8°C for up to 2 weeks. For long term storage store at -20°C in small aliquots to prevent freeze-thaw cycles.

**Precautions**

C1GALT1 Antibody (Center) is for research use only and not for use in diagnostic or therapeutic

procedures.

## C1GALT1 Antibody (Center) - Protein Information

**Name** C1GALT1

### Function

Glycosyltransferase that generates the core 1 O-glycan Gal- beta1-3GalNAc-alpha1-Ser/Thr (T antigen), which is a precursor for many extended O-glycans in glycoproteins (PubMed:<a href="http://www.uniprot.org/citations/11677243" target="\_blank">11677243</a>). Plays a central role in many processes, such as angiogenesis, thrombopoiesis and kidney homeostasis development (By similarity).

### Cellular Location

Membrane {ECO:0000250|UniProtKB:Q9JJ05}; Single- pass type II membrane protein

### Tissue Location

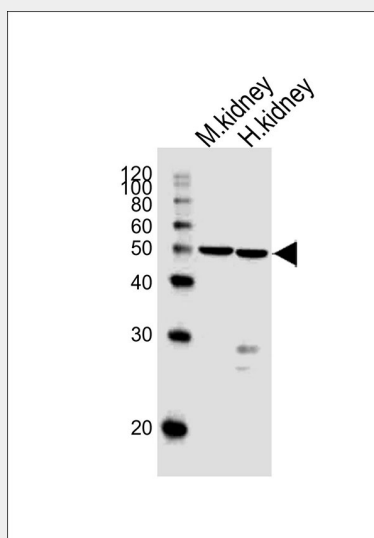
Widely expressed. Highly expressed in kidney, heart, placenta and liver.

## C1GALT1 Antibody (Center) - Protocols

Provided below are standard protocols that you may find useful for product applications.

- [Western Blot](#)
- [Blocking Peptides](#)
- [Dot Blot](#)
- [Immunohistochemistry](#)
- [Immunofluorescence](#)
- [Immunoprecipitation](#)
- [Flow Cytometry](#)
- [Cell Culture](#)

## C1GALT1 Antibody (Center) - Images



Western blot analysis of lysates from mouse kidney and human kidney tissue (from left to right),

using C1GALT1 Antibody (Center)(Cat. #AW5281). AW5281 was diluted at 1:1000 at each lane. A goat anti-rabbit IgG H&L(HRP) at 1:10000 dilution was used as the secondary antibody.

#### **C1GALT1 Antibody (Center) - Background**

Glycosyltransferase that generates the core 1 O-glycan Gal-beta1-3GalNAc-alpha1-Ser/Thr (T antigen), which is a precursor for many extended O-glycans in glycoproteins. Plays a central role in many processes, such as angiogenesis, thrombopoiesis and kidney homeostasis development.

#### **C1GALT1 Antibody (Center) - References**

- Ju T., et al. J. Biol. Chem. 277:178-186(2002).  
Jensen M.P.A., et al. Submitted (JUN-1999) to the EMBL/GenBank/DDBJ databases.  
Hillier L.W., et al. Nature 424:157-164(2003).  
Scherer S.W., et al. Science 300:767-772(2003).  
Ju T., et al. Proc. Natl. Acad. Sci. U.S.A. 99:16613-16618(2002).