

VAMP8 Antibody (N-term)
Affinity Purified Rabbit Polyclonal Antibody (Pab)
Catalog # AW5304**Specification**

VAMP8 Antibody (N-term) - Product Information

Application	WB, IHC-P,E
Primary Accession	Q9BV40
Reactivity	Human
Predicted	Mouse, Rat
Host	Rabbit
Clonality	Polyclonal
Calculated MW	H=11;M=11;Rat=11 KDa
Isotype	Rabbit IgG
Antigen Source	HUMAN

VAMP8 Antibody (N-term) - Additional Information**Gene ID** 8673**Antigen Region**
1-30**Other Names**
VAMP8;Vesicle-associated membrane protein 8**Dilution**
WB~~1:1000
IHC-P~~1:25**Target/Specificity**
This VAMP8 antibody is generated from rabbits immunized with a KLH conjugated synthetic peptide between 1-30 amino acids from the N-terminal region of human VAMP8.**Format**
Purified polyclonal antibody supplied in PBS with 0.09% (W/V) sodium azide. This antibody is purified through a protein A column, followed by peptide affinity purification.**Storage**
Maintain refrigerated at 2-8°C for up to 2 weeks. For long term storage store at -20°C in small aliquots to prevent freeze-thaw cycles.**Precautions**
VAMP8 Antibody (N-term) is for research use only and not for use in diagnostic or therapeutic procedures.**VAMP8 Antibody (N-term) - Protein Information**

Name VAMP8 {ECO:0000303|PubMed:12130530}

Function

SNAREs, soluble N-ethylmaleimide-sensitive factor-attachment protein receptors, are essential proteins for fusion of cellular membranes. SNAREs localized on opposing membranes assemble to form a trans-SNARE complex, an extended, parallel four alpha-helical bundle that drives membrane fusion. VAMP8 is a SNARE involved in autophagy through the direct control of autophagosome membrane fusion with the lysosome membrane via its interaction with the STX17-SNAP29 binary t-SNARE complex (PubMed:23217709, PubMed:25686604). Also required for dense-granule secretion in platelets (PubMed:12130530). Also plays a role in regulated enzyme secretion in pancreatic acinar cells (By similarity). Involved in the abscission of the midbody during cell division, which leads to completely separate daughter cells (By similarity). Involved in the homotypic fusion of early and late endosomes (By similarity). Also participates in the activation of type I interferon antiviral response through a TRIM6-dependent mechanism (PubMed:31694946).

Cellular Location

Lysosome membrane; Single-pass type IV membrane protein. Early endosome membrane; Single-pass type IV membrane protein. Late endosome membrane; Single-pass type IV membrane protein. Cell membrane {ECO:0000250|UniProtKB:O70404}; Single-pass type IV membrane protein. Zymogen granule membrane {ECO:0000250|UniProtKB:O70404}; Single-pass type IV membrane protein. Note=Perinuclear vesicular structures of the early and late endosomes, coated pits, and trans-Golgi (By similarity) Sub-tight junctional domain in retinal pigment epithelium cells Midbody region during cytokinesis. Luminal oriented, apical membranes of nephric tubular cell (By similarity). Cycles through the apical but not through the basolateral plasma membrane (By similarity). Apical region of acinar cells; in zymogen granule membranes (By similarity) {ECO:0000250|UniProtKB:Q9WUF4}

Tissue Location

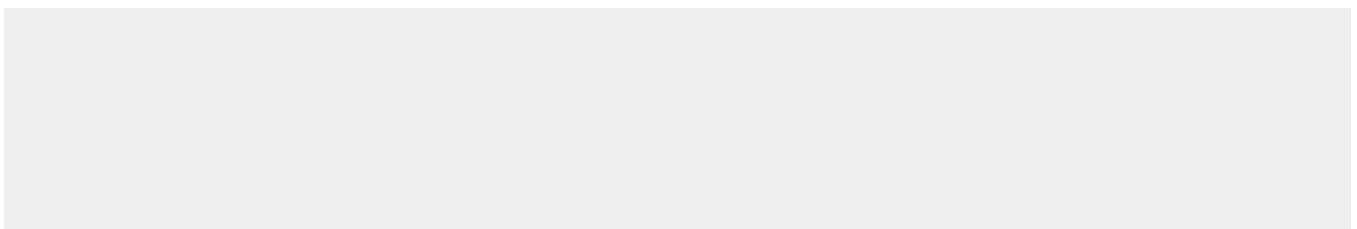
Platelets..

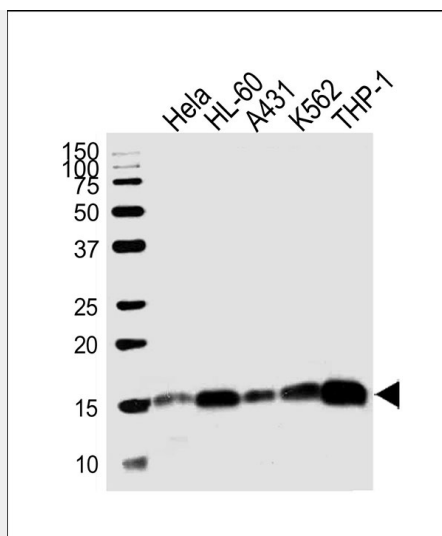
VAMP8 Antibody (N-term) - Protocols

Provided below are standard protocols that you may find useful for product applications.

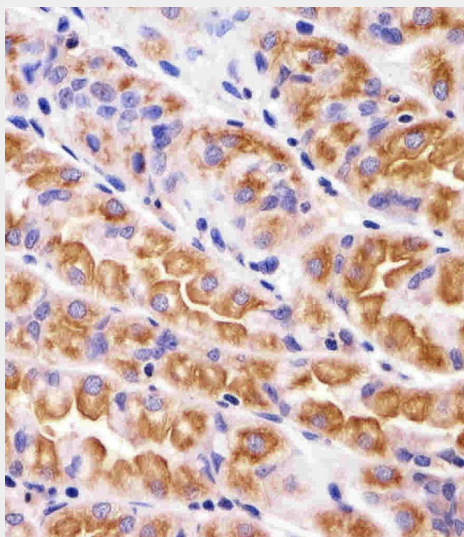
- [Western Blot](#)
- [Blocking Peptides](#)
- [Dot Blot](#)
- [Immunohistochemistry](#)
- [Immunofluorescence](#)
- [Immunoprecipitation](#)
- [Flow Cytometry](#)
- [Cell Culture](#)

VAMP8 Antibody (N-term) - Images





Western blot analysis of lysates from HeLa, HL-60, A431, K562, THP-1 cell line (from left to right), using VAMP8 Antibody (N-term) (Cat. #AW5304). AW5304 was diluted at 1:1000 at each lane. A goat anti-rabbit IgG H&L (HRP) at 1:10000 dilution was used as the secondary antibody.



Immunohistochemical analysis of paraffin-embedded H. stomach section using VAMP8 Antibody (N-term) (Cat#AW5304). AW5304 was diluted at 1:25 dilution. A undiluted biotinylated goat polyvalent antibody was used as the secondary, followed by DAB staining.

VAMP8 Antibody (N-term) - Background

Involved in the targeting and/or fusion of transport vesicles to their target membrane. Involved for dense-granule secretion in platelets. Plays a role in regulated enzyme secretion in pancreatic acinar cells. Involved in the abscission of the midbody during cell division, which leads to completely separate daughter cells. Involved in the homotypic fusion of early and late endosomes (By similarity).

VAMP8 Antibody (N-term) - References

Wong S.H., et al. Mol. Biol. Cell 9:1549-1563(1998).
Kalnine N., et al. Submitted (MAY-2003) to the EMBL/GenBank/DDBJ databases.
Ebert L., et al. Submitted (JUN-2004) to the EMBL/GenBank/DDBJ databases.
Hillier L.W., et al. Nature 434:724-731(2005).

Polgar J., et al. Blood 100:1081-1083(2002).