

TIMM50 Antibody (N-term)
Purified Rabbit Polyclonal Antibody (Pab)
Catalog # AW5314**Specification**

TIMM50 Antibody (N-term) - Product Information

Application	WB,E
Primary Accession	Q3ZCQ8
Reactivity	Human
Host	Rabbit
Clonality	polyclonal
Calculated MW	H=40,50 KDa
Isotype	Rabbit IgG
Antigen Source	HUMAN

TIMM50 Antibody (N-term) - Additional Information**Gene ID** 92609**Antigen Region**
25-56**Other Names**

Mitochondrial import inner membrane translocase subunit TIM50, TIMM50, TIM50

Dilution

WB~~1:1000

Target/Specificity

This TIMM50 antibody is generated from a rabbit immunized with a KLH conjugated synthetic peptide between 25-56 amino acids from the N-terminal region of human TIMM50.

Format

Purified polyclonal antibody supplied in PBS with 0.09% (W/V) sodium azide. This antibody is purified through a protein A column, followed by peptide affinity purification.

Storage

Maintain refrigerated at 2-8°C for up to 2 weeks. For long term storage store at -20°C in small aliquots to prevent freeze-thaw cycles.

Precautions

TIMM50 Antibody (N-term) is for research use only and not for use in diagnostic or therapeutic procedures.

TIMM50 Antibody (N-term) - Protein Information**Name** TIMM50

Synonyms TIM50

Function

Essential component of the TIM23 complex, a complex that mediates the translocation of transit peptide-containing proteins across the mitochondrial inner membrane (PubMed:30190335, PubMed:38828998). Has some phosphatase activity in vitro; however such activity may not be relevant in vivo.

Cellular Location

Mitochondrion inner membrane; Single-pass membrane protein

Tissue Location

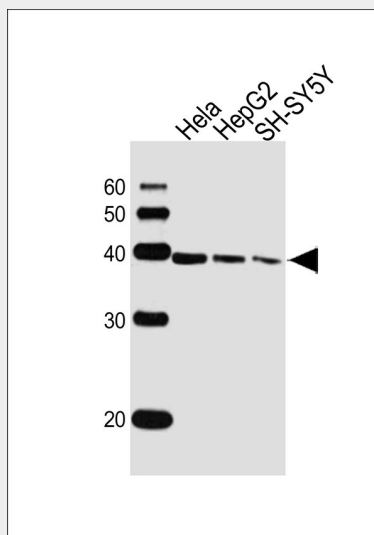
Widely expressed. Expressed at higher level in brain, kidney and liver (at protein level)

TIMM50 Antibody (N-term) - Protocols

Provided below are standard protocols that you may find useful for product applications.

- [Western Blot](#)
- [Blocking Peptides](#)
- [Dot Blot](#)
- [Immunohistochemistry](#)
- [Immunofluorescence](#)
- [Immunoprecipitation](#)
- [Flow Cytometry](#)
- [Cell Culture](#)

TIMM50 Antibody (N-term) - Images



Western blot analysis of lysates from HeLa, HepG2, SH-SY5Y cell line (from left to right), using TIMM50 Antibody (N-term)(Cat. #AW5314). AW5314 was diluted at 1:1000 at each lane. A goat anti-rabbit IgG H&L(HRP) at 1:10000 dilution was used as the secondary antibody. Lysates at 20ug per lane.

TIMM50 Antibody (N-term) - Background

Essential component of the TIM23 complex, a complex that mediates the translocation of transit peptide-containing proteins across the mitochondrial inner membrane. Has some phosphatase activity in vitro; however such activity may not be relevant in vivo. Isoform 2 may participate in the release of snRNPs and SMN from the Cajal body.

TIMM50 Antibody (N-term) - References

Guo Y.,et al.J. Biol. Chem. 279:24813-24825(2004).
Zheng H.,et al.Submitted (OCT-2003) to the EMBL/GenBank/DDBJ databases.
Grimwood J.,et al.Nature 428:529-535(2004).
Zhang C.,et al.Submitted (FEB-1999) to the EMBL/GenBank/DDBJ databases.
Bienvenut W.V.,et al.Submitted (JUN-2005) to UniProtKB.