

**IHH Antibody (C-term)**  
**Purified Rabbit Polyclonal Antibody (Pab)**  
**Catalog # AW5320**

**Specification**

---

**IHH Antibody (C-term) - Product Information**

Application	WB,E
Primary Accession	<a href="#">Q14623</a>
Reactivity	Human, Mouse
Host	Rabbit
Clonality	polyclonal
Calculated MW	H=45;M=45 KDa
Isotype	Rabbit IgG
Antigen Source	HUMAN

**IHH Antibody (C-term) - Additional Information**

**Gene ID** 3549

**Antigen Region**  
397-431

**Other Names**

Indian hedgehog protein, IHH, HHG-2, Indian hedgehog protein N-product, Indian hedgehog protein C-product, IHH

**Dilution**

WB~~1:1000

**Target/Specificity**

This IHH antibody is generated from a rabbit immunized with a KLH conjugated synthetic peptide between 397-431 amino acids from the C-terminal region of human IHH.

**Format**

Purified polyclonal antibody supplied in PBS with 0.09% (W/V) sodium azide. This antibody is purified through a protein A column, followed by peptide affinity purification.

**Storage**

Maintain refrigerated at 2-8°C for up to 2 weeks. For long term storage store at -20°C in small aliquots to prevent freeze-thaw cycles.

**Precautions**

IHH Antibody (C-term) is for research use only and not for use in diagnostic or therapeutic procedures.

**IHH Antibody (C-term) - Protein Information**

**Name** IHH ([HGNC:5956](#))

**Function**

Plays a role in embryonic morphogenesis; it is involved in the regulation of endochondral skeleton formation, and the development of retinal pigment epithelium (RPE), photoreceptors and periocular tissues (By similarity).

**Cellular Location**

[Indian hedgehog protein N-product]: Cell membrane; Lipid-anchor  
{ECO:0000250|UniProtKB:Q62226}. Note=The N-product remains associated with the cell surface.  
{ECO:0000250|UniProtKB:Q15465}

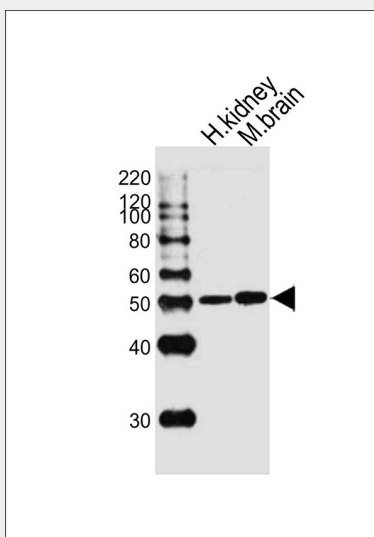
**Tissue Location**

Expressed in embryonic lung, and in adult kidney and liver

**IHH Antibody (C-term) - Protocols**

Provided below are standard protocols that you may find useful for product applications.

- [Western Blot](#)
- [Blocking Peptides](#)
- [Dot Blot](#)
- [Immunohistochemistry](#)
- [Immunofluorescence](#)
- [Immunoprecipitation](#)
- [Flow Cytometry](#)
- [Cell Culture](#)

**IHH Antibody (C-term) - Images**

Western blot analysis of lysates from human kidney, mouse brain tissue lysate (from left to right), using IHH Antibody (C-term) (Cat. #AW5320). AW5320 was diluted at 1:1000 at each lane. A goat anti-rabbit IgG H&L (HRP) at 1:10000 dilution was used as the secondary antibody. Lysates at 20ug per lane.

**IHH Antibody (C-term) - Background**

Intercellular signal essential for a variety of patterning events during development. Binds to the patched (PTC) receptor, which functions in association with smoothened (SMO), to activate the

transcription of target genes. Implicated in endochondral ossification: may regulate the balance between growth and ossification of the developing bones. Induces the expression of parathyroid hormone-related protein (PTHrP) (By similarity).

#### **IHH Antibody (C-term) - References**

Tate G.,et al.J. Biochem. Mol. Biol. Biophys. 4:27-34(2000).  
Mural R.J.,et al.Submitted (JUL-2005) to the EMBL/GenBank/DDBJ databases.  
Marigo V.,et al.Genomics 28:44-51(1995).  
Chang D.T.,et al.Development 120:3339-3353(1994).  
Pepinsky R.B.,et al.J. Biol. Chem. 273:14037-14045(1998).