

CARD6 Antibody (Center)
Affinity Purified Rabbit Polyclonal Antibody (Pab)
Catalog # AW5322**Specification**

CARD6 Antibody (Center) - Product Information

Application	IHC-P, WB,E
Primary Accession	Q9BX69
Reactivity	Human
Host	Rabbit
Clonality	Polyclonal
Calculated MW	H=116 KDa
Isotype	Rabbit IgG
Antigen Source	HUMAN

CARD6 Antibody (Center) - Additional Information**Gene ID** 84674**Other Names**

Caspase recruitment domain-containing protein 6; CARD6

Dilution

IHC-P~~1:25

WB~~1:1000

Target/Specificity

This CARD6 antibody is generated from rabbits immunized with a KLH conjugated synthetic peptide selected from the Center region of human CARD6.

Format

Purified polyclonal antibody supplied in PBS with 0.09% (W/V) sodium azide. This antibody is purified through a protein A column, followed by peptide affinity purification.

Storage

Maintain refrigerated at 2-8°C for up to 2 weeks. For long term storage store at -20°C in small aliquots to prevent freeze-thaw cycles.

Precautions

CARD6 Antibody (Center) is for research use only and not for use in diagnostic or therapeutic procedures.

CARD6 Antibody (Center) - Protein Information**Name** CARD6**Function**

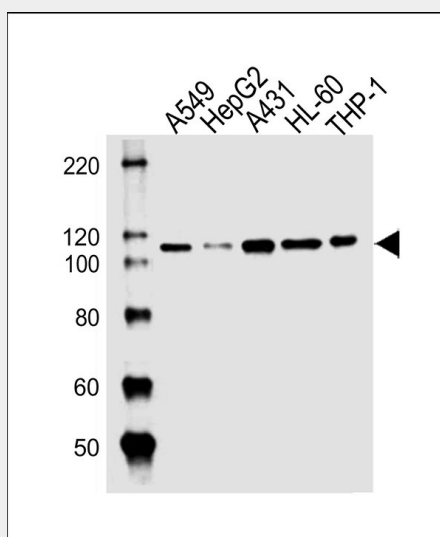
May be involved in apoptosis.

CARD6 Antibody (Center) - Protocols

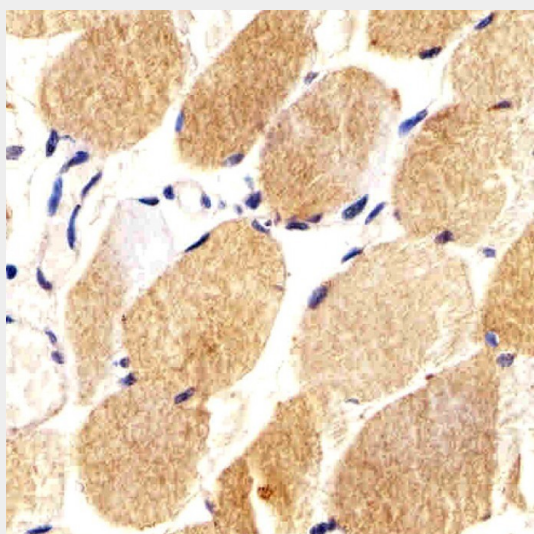
Provided below are standard protocols that you may find useful for product applications.

- [Western Blot](#)
- [Blocking Peptides](#)
- [Dot Blot](#)
- [Immunohistochemistry](#)
- [Immunofluorescence](#)
- [Immunoprecipitation](#)
- [Flow Cytometry](#)
- [Cell Culture](#)

CARD6 Antibody (Center) - Images



Western blot analysis of lysates from A549, HepG2, A431, HL-60, THP-1 cell line (from left to right), using CARD6 Antibody (Center)(Cat. #AW5322). AW5322 was diluted at 1:1000 at each lane. A goat anti-rabbit IgG H&L(HRP) at 1:10000 dilution was used as the secondary antibody. Lysates at 20ug per lane.



Immunohistochemical analysis of paraffin-embedded H. skeletal muscle section using CARD6 Antibody (Center)(Cat#AW5322). AW5322 was diluted at 1:25 dilution. A undiluted biotinylated goat polyvalent antibody was used as the secondary, followed by DAB staining.

CARD6 Antibody (Center) - Background

CARD6 is a protein that contains a caspase recruitment domain (CARD), an antiparallel six-helical bundle that mediates homotypic protein-protein interactions. The encoded protein is a microtubule-associated protein that has been shown to interact with receptor-interacting protein kinases and positively modulate signal transduction pathways converging on activation of the inducible transcription factor NF- κ B.

CARD6 Antibody (Center) - References

Kim,S.S., et.al., Pathology 42 (1), 50-53 (2010)
Olsen,J.V., et.al., Cell 127 (3), 635-648 (2006)