

ATAD3A Antibody (N-term)
Affinity Purified Rabbit Polyclonal Antibody (Pab)
Catalog # AW5324**Specification**

ATAD3A Antibody (N-term) - Product Information

Application	WB,E
Primary Accession	Q9NVI7
Other Accession	Q5T9A4
Reactivity	Human
Host	Rabbit
Clonality	Polyclonal
Calculated MW	H=71,62 KDa
Isotype	Rabbit IgG
Antigen Source	HUMAN

ATAD3A Antibody (N-term) - Additional Information**Gene ID** 55210**Antigen Region**
24-48**Other Names**
ATAD3A;ATPase family AAA domain-containing protein 3A**Dilution**
WB~~1:1000**Target/Specificity**
This ATAD3A antibody is generated from rabbits immunized with a KLH conjugated synthetic peptide between 24-48 amino acids from the N-terminal region of human ATAD3A.**Format**
Purified polyclonal antibody supplied in PBS with 0.09% (W/V) sodium azide. This antibody is purified through a protein A column, followed by peptide affinity purification.**Storage**
Maintain refrigerated at 2-8°C for up to 2 weeks. For long term storage store at -20°C in small aliquots to prevent freeze-thaw cycles.**Precautions**
ATAD3A Antibody (N-term) is for research use only and not for use in diagnostic or therapeutic procedures.**ATAD3A Antibody (N-term) - Protein Information****Name** ATAD3A ([HGNC:25567](#))

Function

Essential for mitochondrial network organization, mitochondrial metabolism and cell growth at organism and cellular level. May play an important role in mitochondrial protein synthesis. May also participate in mitochondrial DNA replication. May bind to mitochondrial DNA D-loops and contribute to nucleoid stability. Required for enhanced channeling of cholesterol for hormone-dependent steroidogenesis. Involved in mitochondrial-mediated antiviral innate immunity (PubMed:31522117).

Cellular Location

Mitochondrion inner membrane; Single-pass membrane protein. Mitochondrion matrix, mitochondrion nucleoid Note=In the mitochondrion inner membrane, enriched in sites with the potential to form contacts with the outer membrane (PubMed:20349121, PubMed:20154147). The N-terminal domain interacts with the inner surface of the mitochondrial outer membrane and the C-terminal domain localizes in a specific matrix compartment, where it is associated with nucleoids (PubMed:18063578).

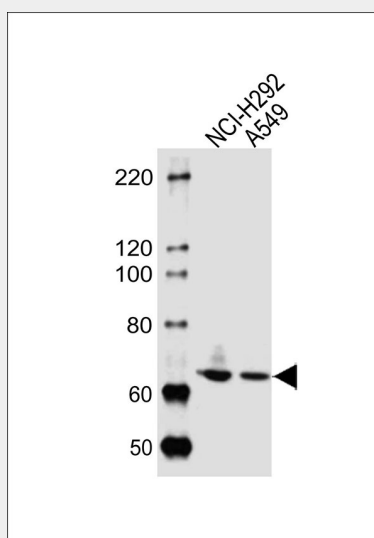
Tissue Location

Overexpressed in lung adenocarcinomas (at protein level).

ATAD3A Antibody (N-term) - Protocols

Provided below are standard protocols that you may find useful for product applications.

- [Western Blot](#)
- [Blocking Peptides](#)
- [Dot Blot](#)
- [Immunohistochemistry](#)
- [Immunofluorescence](#)
- [Immunoprecipitation](#)
- [Flow Cytometry](#)
- [Cell Culture](#)

ATAD3A Antibody (N-term) - Images

Western blot analysis of lysates from NCI-H292,A549 cell line (from left to right), using ATAD3A Antibody (N-term)(Cat. #AW5324). AW5324 was diluted at 1:1000 at each lane. A goat anti-rabbit

IgG H&L(HRP) at 1:10000 dilution was used as the secondary antibody. Lysates at 20ug per lane.

ATAD3A Antibody (N-term) - References

Ota T., et al. Nat. Genet. 36:40-45(2004).
Gregory S.G., et al. Nature 441:315-321(2006).
Bienvenut W.V., et al. Submitted (JUL-2007) to UniProtKB.
Daub H., et al. Mol. Cell 31:438-448(2008).
Choudhary C., et al. Science 325:834-840(2009).