

BRAF Antibody
Affinity Purified Rabbit Polyclonal Antibody (Pab)
Catalog # AW5325**Specification**

BRAF Antibody - Product Information

Application	FC, WB,E
Primary Accession	P15056
Reactivity	Human
Host	Rabbit
Clonality	Polyclonal
Calculated MW	H=84 KDa
Isotype	Rabbit IgG
Antigen Source	HUMAN

BRAF Antibody - Additional Information**Gene ID** 673**Antigen Region**
4-385**Other Names**

BRAF; BRAF1; RAFB1; Serine/threonine-protein kinase B-raf; Proto-oncogene B-Raf; p94; v-Raf murine sarcoma viral oncogene homolog B1

Dilution

FC~~1:10~50

WB~~1:1000

Target/Specificity

This BRAF antibody is generated from rabbits immunized with BRAF recombinant protein.

Format

Purified polyclonal antibody supplied in PBS with 0.09% (W/V) sodium azide. This antibody is purified through a protein A column, followed by peptide affinity purification.

Storage

Maintain refrigerated at 2-8°C for up to 2 weeks. For long term storage store at -20°C in small aliquots to prevent freeze-thaw cycles.

Precautions

BRAF Antibody is for research use only and not for use in diagnostic or therapeutic procedures.

BRAF Antibody - Protein Information**Name** BRAF ([HGNC:1097](#))

Synonyms BRAF1, RAFB1**Function**

Protein kinase involved in the transduction of mitogenic signals from the cell membrane to the nucleus (Probable). Phosphorylates MAP2K1, and thereby activates the MAP kinase signal transduction pathway (PubMed:21441910, PubMed:29433126). Phosphorylates PFKFB2 (PubMed:36402789). May play a role in the postsynaptic responses of hippocampal neurons (PubMed:1508179).

Cellular Location

Nucleus. Cytoplasm. Cell membrane. Note=Colocalizes with RGS14 and RAF1 in both the cytoplasm and membranes.

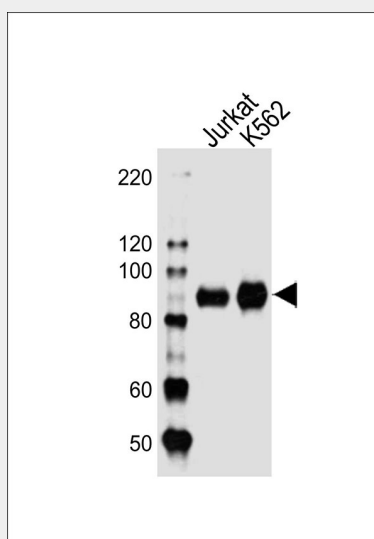
Tissue Location

Brain and testis.

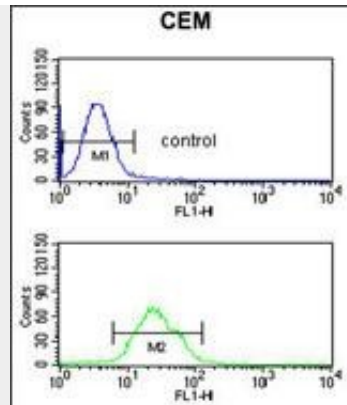
BRAF Antibody - Protocols

Provided below are standard protocols that you may find useful for product applications.

- [Western Blot](#)
- [Blocking Peptides](#)
- [Dot Blot](#)
- [Immunohistochemistry](#)
- [Immunofluorescence](#)
- [Immunoprecipitation](#)
- [Flow Cytometry](#)
- [Cell Culture](#)

BRAF Antibody - Images

Western blot analysis of lysates from Jurkat,K562 cell line (from left to right), using BRAF Antibody(Cat. #AW5325). AW5325 was diluted at 1:1000 at each lane. A goat anti-rabbit IgG H&L(HRP) at 1:10000 dilution was used as the secondary antibody.Lysates at 20ug per lane.



BRAF Antibody (Cat. #AW5325) flow cytometric analysis of CEM cells (bottom histogram) compared to a negative control cell (top histogram). FITC-conjugated goat-anti-rabbit secondary antibodies were used for the analysis.

BRAF Antibody - Background

BRAF, a member of the RAF subfamily of Ser/Thr protein kinases, is involved in the transduction of mitogenic signals from the cell membrane to the nucleus. It may play a role in the postsynaptic responses of hippocampal neurons. This cytoplasmic protein is expressed in brain and testis. Defects in BRAF are involved in a wide range of cancers including lung cancer and non-Hodgkin lymphoma (NHL). This protein contains 1 zinc-dependent phorbol-ester and DAG binding domain.

BRAF Antibody - References

Hingorani, S.R., et al., Cancer Res. 63(17):5198-5202 (2003).
Lee, J.W., et al., Br. J. Cancer 89(10):1958-1960 (2003).
Davies, H., et al., Nature 417(6892):949-954 (2002).
Naoki, K., et al., Cancer Res. 62(23):7001-7003 (2002).
Stephens, R.M., et al., Mol. Cell. Biol. 12(9):3733-3742 (1992).