

**EHD4 Antibody (C-term)**  
**Purified Rabbit Polyclonal Antibody (Pab)**  
**Catalog # AW5329****Specification**

---

**EHD4 Antibody (C-term) - Product Information**

Application	WB,E
Primary Accession	<a href="#">Q9H223</a>
Other Accession	<a href="#">Q9EQP2</a>
Reactivity	Human, Mouse
Host	Rabbit
Clonality	polyclonal
Calculated MW	H=61;M=61 KDa
Isotype	Rabbit IgG
Antigen Source	HUMAN

**EHD4 Antibody (C-term) - Additional Information****Gene ID** 30844**Antigen Region**  
527-561**Other Names**

EH domain-containing protein 4, Hepatocellular carcinoma-associated protein 10/11, PAST homolog 4, EHD4, HCA10, HCA11, PAST4

**Dilution**

WB~~1:1000

**Target/Specificity**

This EHD4 antibody is generated from a rabbit immunized with a KLH conjugated synthetic peptide between 527-561 amino acids from the C-terminal region of human EHD4.

**Format**

Purified polyclonal antibody supplied in PBS with 0.09% (W/V) sodium azide. This antibody is purified through a protein A column, followed by peptide affinity purification.

**Storage**

Maintain refrigerated at 2-8°C for up to 2 weeks. For long term storage store at -20°C in small aliquots to prevent freeze-thaw cycles.

**Precautions**

EHD4 Antibody (C-term) is for research use only and not for use in diagnostic or therapeutic procedures.

**EHD4 Antibody (C-term) - Protein Information**

**Name** EHD4 ([HGNC:3245](#))

### Function

ATP- and membrane-binding protein that probably controls membrane reorganization/tubulation upon ATP hydrolysis. Plays a role in early endosomal transport (PubMed:<a href="http://www.uniprot.org/citations/17233914" target="\_blank">17233914</a>, PubMed:<a href="http://www.uniprot.org/citations/18331452" target="\_blank">18331452</a>). During sprouting angiogenesis, in complex with PACSIN2 and MICALL1, forms recycling endosome-like tubular structure at asymmetric adherens junctions to control CDH5 trafficking (By similarity).

### Cellular Location

Early endosome membrane; Peripheral membrane protein; Cytoplasmic side. Recycling endosome membrane; Peripheral membrane protein; Cytoplasmic side. Cell membrane {ECO:0000250|UniProtKB:Q9EQP2}; Peripheral membrane protein; Cytoplasmic side. Cell junction, adherens junction {ECO:0000250|UniProtKB:Q9EQP2}

### Tissue Location

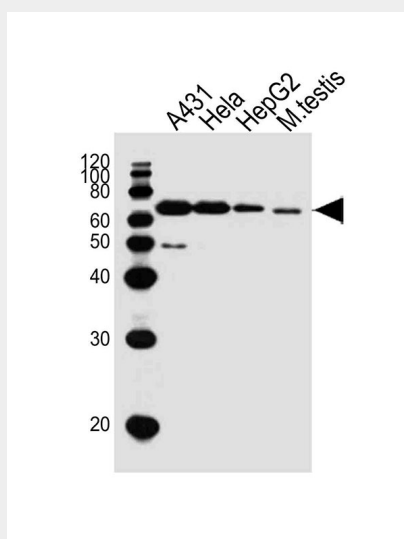
Highly expressed in pancreas and heart.

### EHD4 Antibody (C-term) - Protocols

Provided below are standard protocols that you may find useful for product applications.

- [Western Blot](#)
- [Blocking Peptides](#)
- [Dot Blot](#)
- [Immunohistochemistry](#)
- [Immunofluorescence](#)
- [Immunoprecipitation](#)
- [Flow Cytometry](#)
- [Cell Culture](#)

### EHD4 Antibody (C-term) - Images



Western blot analysis of lysates from A431, HeLa, HepG2 cell line, mouse testis tissue lysate (from left to right), using EHD4 Antibody (C-term) (Cat. #AW5329). AW5329 was diluted at 1:1000 at each lane. A goat anti-rabbit IgG H&L (HRP) at 1:10000 dilution was used as the secondary

antibody.Lysates at 20ug per lane.

#### **EHD4 Antibody (C-term) - Background**

Plays a role in early endosomal transport.

#### **EHD4 Antibody (C-term) - References**

Wang Y.,et al.J. Immunol. 169:1102-1109(2002).  
Wang Y.-G.,et al.Submitted (SEP-2000) to the EMBL/GenBank/DDBJ databases.  
Benjamin S.,et al.Submitted (DEC-2001) to the EMBL/GenBank/DDBJ databases.  
Pohl U.,et al.Genomics 63:255-262(2000).  
Rush J.,et al.Nat. Biotechnol. 23:94-101(2005).