

**TCL1A Antibody (Center)**  
**Purified Rabbit Polyclonal Antibody (Pab)**  
**Catalog # AW5346****Specification**

---

**TCL1A Antibody (Center) - Product Information**

Application	FC, WB,E
Primary Accession	<a href="#">P56279</a>
Reactivity	Human
Host	Rabbit
Clonality	Polyclonal
Calculated MW	H=13 KDa
Isotype	Rabbit IgG
Antigen Source	HUMAN

**TCL1A Antibody (Center) - Additional Information****Gene ID** 8115**Antigen Region**  
32-66**Other Names**

T-cell leukemia/lymphoma protein 1A, Oncogene TCL-1, Oncogene TCL1, Protein p14 TCL1, TCL1A, TCL1

**Dilution**FC~~1:25  
WB~~1:1000**Target/Specificity**

This TCL1A antibody is generated from a rabbit immunized with a KLH conjugated synthetic peptide between 32-66 amino acids from the Central region of human TCL1A.

**Format**

Purified polyclonal antibody supplied in PBS with 0.09% (W/V) sodium azide. This antibody is purified through a protein A column, followed by peptide affinity purification.

**Storage**

Maintain refrigerated at 2-8°C for up to 2 weeks. For long term storage store at -20°C in small aliquots to prevent freeze-thaw cycles.

**Precautions**

TCL1A Antibody (Center) is for research use only and not for use in diagnostic or therapeutic procedures.

**TCL1A Antibody (Center) - Protein Information**

**Name** TCL1A

**Synonyms** TCL1

**Function**

Enhances the phosphorylation and activation of AKT1, AKT2 and AKT3. Promotes nuclear translocation of AKT1. Enhances cell proliferation, stabilizes mitochondrial membrane potential and promotes cell survival.

**Cellular Location**

Cytoplasm. Nucleus. Microsome. Endoplasmic reticulum. Note=Microsomal fraction

**Tissue Location**

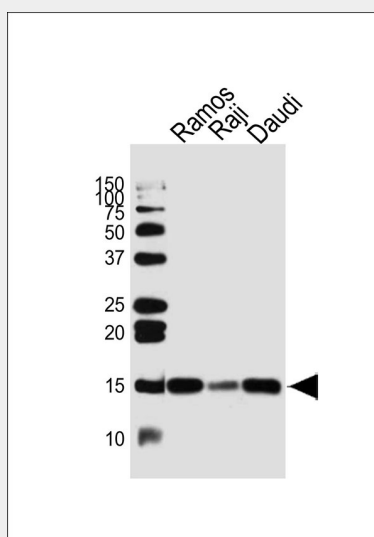
Restricted in the T-cell lineage to immature thymocytes and activated peripheral lymphocytes. Preferentially expressed early in T- and B-lymphocyte differentiation

**TCL1A Antibody (Center) - Protocols**

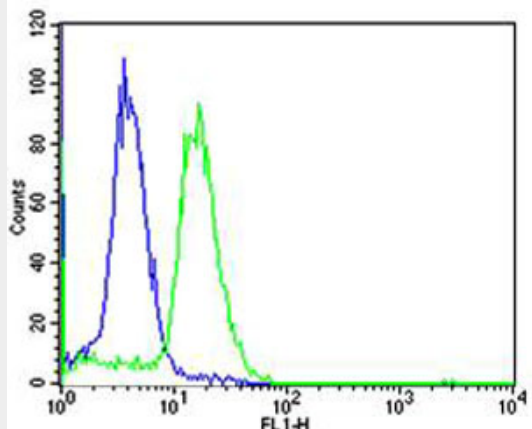
Provided below are standard protocols that you may find useful for product applications.

- [Western Blot](#)
- [Blocking Peptides](#)
- [Dot Blot](#)
- [Immunohistochemistry](#)
- [Immunofluorescence](#)
- [Immunoprecipitation](#)
- [Flow Cytometry](#)
- [Cell Culture](#)

**TCL1A Antibody (Center) - Images**



Western blot analysis of lysates from Ramos, Raji, Daudi cell line (from left to right), using TCL1A Antibody (Center) (Cat. #AW5346). AW5346 was diluted at 1:1000 at each lane. A goat anti-rabbit IgG H&L (HRP) at 1:10000 dilution was used as the secondary antibody. Lysates at 20ug per lane.



Flow cytometric analysis of Ramos cells using TCL1A Antibody (Center)(green, Cat#AW5346) compared to an isotype control of rabbit IgG(blue). AW5346 was diluted at 1:25 dilution. An Alexa Fluor® 488 goat anti-rabbit IgG at 1:400 dilution was used as the secondary antibody.

#### **TCL1A Antibody (Center) - Background**

Enhances the phosphorylation and activation of AKT1, AKT2 and AKT3. Promotes nuclear translocation of AKT1. Enhances cell proliferation, stabilizes mitochondrial membrane potential and promotes cell survival.

#### **TCL1A Antibody (Center) - References**

Virgilio L.,et al.Proc. Natl. Acad. Sci. U.S.A. 91:12530-12534(1994).  
Ebert L.,et al.Submitted (JUN-2004) to the EMBL/GenBank/DDBJ databases.  
Fu T.-B.,et al.Cancer Res. 54:6297-6301(1994).  
Laine J.,et al.Mol. Cell 6:395-407(2000).  
Pekarsky Y.,et al.Proc. Natl. Acad. Sci. U.S.A. 97:3028-3033(2000).