

**IL13RA1 Antibody (C-term)**  
**Purified Rabbit Polyclonal Antibody (Pab)**  
**Catalog # AW5366****Specification**

---

**IL13RA1 Antibody (C-term) - Product Information**

Application	WB,E
Primary Accession	<a href="#">P78552</a>
Reactivity	Human
Host	Rabbit
Clonality	Polyclonal
Calculated MW	H=49 KDa
Isotype	Rabbit IgG
Antigen Source	HUMAN

**IL13RA1 Antibody (C-term) - Additional Information****Gene ID** 3597**Antigen Region**  
13-42**Other Names**

Interleukin-13 receptor subunit alpha-1, IL-13 receptor subunit alpha-1, IL-13R subunit alpha-1, IL-13R-alpha-1, IL-13RA1, Cancer/testis antigen 19, CT19, CD213a1, IL13RA1, IL13R, IL13RA

**Dilution**

WB~~1:1000

**Target/Specificity**

This IL13RA1 antibody is generated from a rabbit immunized with a KLH conjugated synthetic peptide between 207-238 amino acids from the C-terminal region of human IL13RA1.

**Format**

Purified polyclonal antibody supplied in PBS with 0.09% (W/V) sodium azide. This antibody is purified through a protein A column, followed by peptide affinity purification.

**Storage**

Maintain refrigerated at 2-8°C for up to 2 weeks. For long term storage store at -20°C in small aliquots to prevent freeze-thaw cycles.

**Precautions**

IL13RA1 Antibody (C-term) is for research use only and not for use in diagnostic or therapeutic procedures.

**IL13RA1 Antibody (C-term) - Protein Information****Name** IL13RA1

**Synonyms** IL13R, IL13RA**Function**

Binds with low affinity to interleukin-13 (IL13). Together with IL4RA can form a functional receptor for IL13. Also serves as an alternate accessory protein to the common cytokine receptor gamma chain for interleukin-4 (IL4) signaling, but cannot replace the function of IL2RG in allowing enhanced interleukin-2 (IL2) binding activity.

**Cellular Location**

Membrane; Single-pass type I membrane protein.

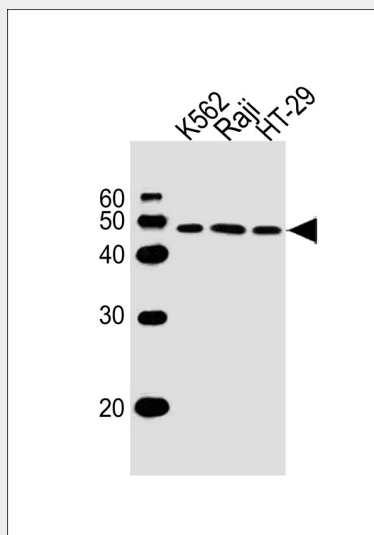
**Tissue Location**

Ubiquitous. Highest levels in heart, liver, skeletal muscle and ovary; lowest levels in brain, lung and kidney Also found in B-cells, T-cells and endothelial cells

**IL13RA1 Antibody (C-term) - Protocols**

Provided below are standard protocols that you may find useful for product applications.

- [Western Blot](#)
- [Blocking Peptides](#)
- [Dot Blot](#)
- [Immunohistochemistry](#)
- [Immunofluorescence](#)
- [Immunoprecipitation](#)
- [Flow Cytometry](#)
- [Cell Culture](#)

**IL13RA1 Antibody (C-term) - Images**

All lanes : Anti-IL13RA1 Antibody (C-term) at 1/1000 dilution Lane 1: K562 whole cell lysates Lane 2: Raji whole cell lysates Lane 3: HT-29 whole cell lysates Lysates/proteins at 20 µg per lane. Secondary Goat Anti-Rabbit IgG, (H+L), Peroxidase conjugated at 1/10000 dilution Predicted band size : 49 kDa Blocking/Dilution buffer: 5% NFDM/TBST.

**IL13RA1 Antibody (C-term) - Background**

Binds with low affinity to interleukin-13 (IL13). Together with IL4RA can form a functional receptor for IL13. Also serves as an alternate accessory protein to the common cytokine receptor gamma chain for interleukin-4 (IL4) signaling, but cannot replace the function of IL2RG in allowing enhanced interleukin-2 (IL2) binding activity.

#### **IL13RA1 Antibody (C-term) - References**

Miloux B., et al. FEBS Lett. 401:163-166(1997).  
Gauchat J.-F., et al. Submitted (JAN-1997) to the EMBL/GenBank/DDBJ databases.  
Aman M.J., et al. J. Biol. Chem. 271:29265-29270(1996).  
Wada M., et al. Submitted (SEP-1999) to the EMBL/GenBank/DDBJ databases.  
Ota T., et al. Nat. Genet. 36:40-45(2004).