

**SERBP1 Antibody (Center)**  
**Purified Rabbit Polyclonal Antibody (Pab)**  
**Catalog # AW5368****Specification**

---

**SERBP1 Antibody (Center) - Product Information**

Application	WB,E
Primary Accession	<a href="#">Q8NC51</a>
Reactivity	Human
Predicted	Mouse, Rat
Host	Rabbit
Clonality	Polyclonal
Calculated MW	H=45,44,43,42;M=45,43,42,26;Rat=45,43 KDa
Isotype	Rabbit IgG
Antigen Source	HUMAN

**SERBP1 Antibody (Center) - Additional Information****Gene ID** 26135**Antigen Region**  
149-183**Other Names**

Plasminogen activator inhibitor 1 RNA-binding protein, PAI1 RNA-binding protein 1, PAI-RBP1, SERPINE1 mRNA-binding protein 1, SERBP1, PAIRBP1

**Dilution**

WB~~1:1000

**Target/Specificity**

This SERBP1 antibody is generated from a rabbit immunized with a KLH conjugated synthetic peptide between 149-183 amino acids from the Central region of human SERBP1.

**Format**

Purified polyclonal antibody supplied in PBS with 0.09% (W/V) sodium azide. This antibody is purified through a protein A column, followed by peptide affinity purification.

**Storage**

Maintain refrigerated at 2-8°C for up to 2 weeks. For long term storage store at -20°C in small aliquots to prevent freeze-thaw cycles.

**Precautions**

SERBP1 Antibody (Center) is for research use only and not for use in diagnostic or therapeutic procedures.

**SERBP1 Antibody (Center) - Protein Information**

**Name** SERBP1 {ECO:0000303|PubMed:36691768, ECO:0000312|HGNC:HGNC:17860}

### Function

Ribosome-binding protein that promotes ribosome hibernation, a process during which ribosomes are stabilized in an inactive state and preserved from proteasomal degradation (PubMed:<a href="http://www.uniprot.org/citations/36691768" target="\_blank">36691768</a>). Acts via its association with EEF2/eEF2 factor, sequestering EEF2/eEF2 at the A- site of the ribosome and promoting ribosome stabilization and storage in an inactive state (By similarity). May also play a role in the regulation of mRNA stability: binds to the 3'-most 134 nt of the SERPINE1/PAI1 mRNA, a region which confers cyclic nucleotide regulation of message decay (PubMed:<a href="http://www.uniprot.org/citations/11001948" target="\_blank">11001948</a>). Seems to play a role in PML-nuclear bodies formation (PubMed:<a href="http://www.uniprot.org/citations/28695742" target="\_blank">28695742</a>).

### Cellular Location

Cytoplasm. Nucleus. Cytoplasm, perinuclear region

### Tissue Location

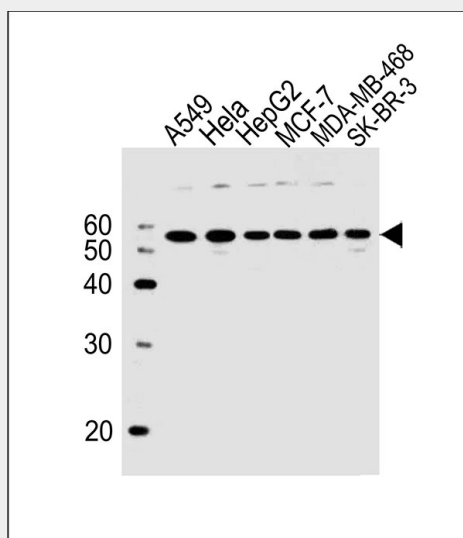
Expressed at high level in the heart, skeletal muscle and kidney, and at low levels in placenta, liver and brain

## SERBP1 Antibody (Center) - Protocols

Provided below are standard protocols that you may find useful for product applications.

- [Western Blot](#)
- [Blocking Peptides](#)
- [Dot Blot](#)
- [Immunohistochemistry](#)
- [Immunofluorescence](#)
- [Immunoprecipitation](#)
- [Flow Cytometry](#)
- [Cell Culture](#)

## SERBP1 Antibody (Center) - Images



All lanes : Anti-SERBP1 Antibody (Center) at 1:1/1000 dilution Lane 1: A549 whole cell lysates

Lane 2: Hela whole cell lysates Lane 3: HepG2 whole cell lysates Lane 4: MCF-7 whole cell lysates  
Lane 5: MDA-MB-468 whole cell lysates Lane 6: SK-BR-3 whole cell lysates Lysates/proteins at 20  
µg per lane. Secondary Goat Anti-Rabbit IgG, (H+L), Peroxidase conjugated at 1/10000 dilution  
Predicted band size : 45 kDa Blocking/Dilution buffer: 5% NFDM/TBST.

#### **SERBP1 Antibody (Center) - Background**

May play a role in the regulation of mRNA stability. Binds to the 3'-most 134 nt of the  
SERPINE1/PAI1 mRNA, a region which confers cyclic nucleotide regulation of message decay.

#### **SERBP1 Antibody (Center) - References**

Lai C.-H., et al. Genome Res. 10:703-713(2000).  
Wiemann S., et al. Genome Res. 11:422-435(2001).  
Ota T., et al. Nat. Genet. 36:40-45(2004).  
Ebert L., et al. Submitted (JUN-2004) to the EMBL/GenBank/DDBJ databases.  
Gregory S.G., et al. Nature 441:315-321(2006).