

**NTF3 Antibody (Center)**  
**Purified Rabbit Polyclonal Antibody (Pab)**  
**Catalog # AW5408**

**Specification**

---

**NTF3 Antibody (Center) - Product Information**

Application	WB,E
Primary Accession	<a href="#">P20783</a>
Other Accession	<a href="#">P18280</a> , <a href="#">P20181</a>
Reactivity	Human, Rat
Predicted	Mouse
Host	Rabbit
Clonality	Polyclonal
Calculated MW	H=29,31;M=30;R=30 KDa
Isotype	Rabbit IgG
Antigen Source	HUMAN

**NTF3 Antibody (Center) - Additional Information**

**Gene ID** 4908

**Antigen Region**  
89-120

**Other Names**  
Neurotrophin-3, NT-3, HDNF, Nerve growth factor 2, NGF-2, Neurotrophic factor, NTF3

**Dilution**  
WB~~1:1000

**Target/Specificity**  
This NTF3 antibody is generated from a rabbit immunized with a KLH conjugated synthetic peptide between 89-120 amino acids from the Central region of human NTF3.

**Format**  
Purified polyclonal antibody supplied in PBS with 0.09% (W/V) sodium azide. This antibody is purified through a protein A column, followed by peptide affinity purification.

**Storage**  
Maintain refrigerated at 2-8°C for up to 2 weeks. For long term storage store at -20°C in small aliquots to prevent freeze-thaw cycles.

**Precautions**  
NTF3 Antibody (Center) is for research use only and not for use in diagnostic or therapeutic procedures.

**NTF3 Antibody (Center) - Protein Information**

**Name** NTF3

**Function**

Seems to promote the survival of visceral and proprioceptive sensory neurons.

**Cellular Location**

Secreted.

**Tissue Location**

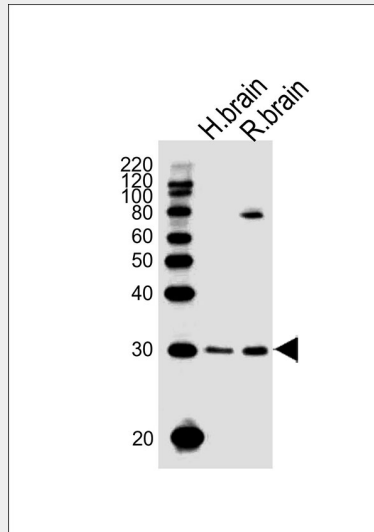
Brain and peripheral tissues.

**NTF3 Antibody (Center) - Protocols**

Provided below are standard protocols that you may find useful for product applications.

- [Western Blot](#)
- [Blocking Peptides](#)
- [Dot Blot](#)
- [Immunohistochemistry](#)
- [Immunofluorescence](#)
- [Immunoprecipitation](#)
- [Flow Cytometry](#)
- [Cell Culture](#)

**NTF3 Antibody (Center) - Images**



All lanes : Anti-NTF3 Antibody (Center) at 1:1000 dilution Lane 1: human brain lysates Lane 2: rat brain lysates Lysates/proteins at 20  $\mu$ g per lane. Secondary Goat Anti-Rabbit IgG, (H+L), Peroxidase conjugated at 1/10000 dilution Predicted band size : 29 kDa Blocking/Dilution buffer: 5% NFDM/TBST.

**NTF3 Antibody (Center) - Background**

Seems to promote the survival of visceral and proprioceptive sensory neurons.

**NTF3 Antibody (Center) - References**

Kaisho Y., et al. FEBS Lett. 266:187-191(1990).  
Rosenthal A., et al. Neuron 4:767-773(1990).  
Jones K.R., et al. Proc. Natl. Acad. Sci. U.S.A. 87:8060-8064(1990).  
Maisonpierre P.C., et al. Genomics 10:558-568(1991).  
Ota T., et al. Nat. Genet. 36:40-45(2004).