

CTDSP1 Antibody (Center)
Purified Rabbit Polyclonal Antibody (Pab)
Catalog # AW5411**Specification**

CTDSP1 Antibody (Center) - Product Information

| | |
|-------------------|------------------------|
| Application | WB,E |
| Primary Accession | O9GZU7 |
| Other Accession | P58466 |
| Reactivity | Human, Mouse |
| Host | Rabbit |
| Clonality | Polyclonal |
| Calculated MW | H=29;M=29 KDa |
| Isotype | Rabbit IgG |
| Antigen Source | HUMAN |

CTDSP1 Antibody (Center) - Additional Information**Gene ID** 58190**Antigen Region**
96-130**Other Names**

Carboxy-terminal domain RNA polymerase II polypeptide A small phosphatase 1, Nuclear LIM interactor-interacting factor 3, NLI-IF, NLI-interacting factor 3, Small C-terminal domain phosphatase 1, SCP1, Small CTD phosphatase 1, CTDSP1, NIF3, NLIIF, SCP1

Dilution

WB~~1:1000

Target/Specificity

This CTDSP1 antibody is generated from a rabbit immunized with a KLH conjugated synthetic peptide between 96-130 amino acids from the Central region of human CTDSP1.

Format

Purified polyclonal antibody supplied in PBS with 0.09% (W/V) sodium azide. This antibody is purified through a protein A column, followed by peptide affinity purification.

Storage

Maintain refrigerated at 2-8°C for up to 2 weeks. For long term storage store at -20°C in small aliquots to prevent freeze-thaw cycles.

Precautions

CTDSP1 Antibody (Center) is for research use only and not for use in diagnostic or therapeutic procedures.

CTDSP1 Antibody (Center) - Protein Information

Name CTDSP1

Synonyms NIF3, NLIIF, SCP1

Function

Preferentially catalyzes the dephosphorylation of 'Ser-5' within the tandem 7 residue repeats in the C-terminal domain (CTD) of the largest RNA polymerase II subunit POLR2A. Negatively regulates RNA polymerase II transcription, possibly by controlling the transition from initiation/capping to processive transcript elongation. Recruited by REST to neuronal genes that contain RE-1 elements, leading to neuronal gene silencing in non-neuronal cells.

Cellular Location

Nucleus. Note=Colocalizes with RNA polymerase II

Tissue Location

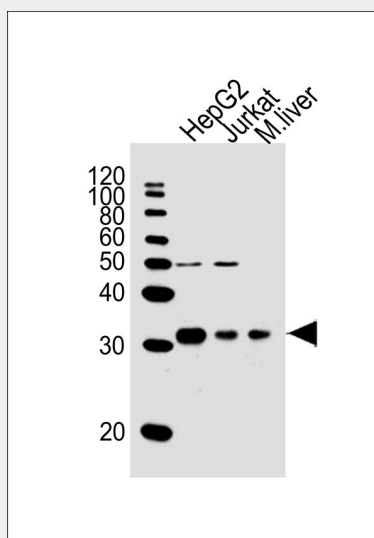
Expression is restricted to non-neuronal tissues. Highest expression in skeletal muscle, spleen, lung and placenta

CTDSP1 Antibody (Center) - Protocols

Provided below are standard protocols that you may find useful for product applications.

- [Western Blot](#)
- [Blocking Peptides](#)
- [Dot Blot](#)
- [Immunohistochemistry](#)
- [Immunofluorescence](#)
- [Immunoprecipitation](#)
- [Flow Cytometry](#)
- [Cell Culture](#)

CTDSP1 Antibody (Center) - Images



All lanes : Anti-CTDSP1 Antibody (Center) at 1:1000 dilution Lane 1: HepG2 whole cell lysates Lane 2: Jurkat whole cell lysates Lane 3: mouse liver lysates Lysates/proteins at 20 µg per lane. Secondary Goat Anti-Rabbit IgG, (H+L), Peroxidase conjugated at 1/10000 dilution Predicted band size : 29 kDa Blocking/Dilution buffer: 5% NFDm/TBST.

CTDSP1 Antibody (Center) - Background

Preferentially catalyzes the dephosphorylation of Ser-5 within the tandem 7 residues repeats in the C-terminal domain (CTD) of the largest RNA polymerase II subunit POLR2A. Negatively regulates RNA polymerase II transcription, possibly by controlling the transition from initiation/capping to processive transcript elongation. Recruited by REST to neuronal genes that contain RE-1 elements, leading to neuronal gene silencing in non-neuronal cells.

CTDSP1 Antibody (Center) - References

Marquet S., et al. Mamm. Genome 11:755-762(2000).
Yeo M., et al. J. Biol. Chem. 278:26078-26085(2003).
Li W.B., et al. Submitted (APR-2003) to the EMBL/GenBank/DDBJ databases.
Hillier L.W., et al. Nature 434:724-731(2005).
Yeo M., et al. Science 307:596-600(2005).

CTDSP1 Antibody (Center) - Citations

- [Deubiquitinase USP29 promotes gastric cancer cell migration by cooperating with phosphatase SCP1 to stabilize Snail protein](#)