

ITGB8 Antibody (Center)
Purified Rabbit Polyclonal Antibody (Pab)
Catalog # AW5424**Specification**

ITGB8 Antibody (Center) - Product Information

Application	WB, IHC-P,E
Primary Accession	P26012
Other Accession	P26013
Reactivity	Human
Host	Rabbit
Clonality	Polyclonal
Calculated MW	H= 86 KDa
Isotype	Rabbit IgG
Antigen Source	HUMAN

ITGB8 Antibody (Center) - Additional Information**Gene ID** 3696**Antigen Region**
197-231**Other Names**
Integrin beta-8, ITGB8**Dilution**
WB~~1:1000
IHC-P~~1:25**Target/Specificity**
This ITGB8 antibody is generated from a rabbit immunized with a KLH conjugated synthetic peptide between 197-231 amino acids from the Central region of human ITGB8.**Format**
Purified polyclonal antibody supplied in PBS with 0.09% (W/V) sodium azide. This antibody is purified through a protein A column, followed by peptide affinity purification.**Storage**
Maintain refrigerated at 2-8°C for up to 2 weeks. For long term storage store at -20°C in small aliquots to prevent freeze-thaw cycles.**Precautions**
ITGB8 Antibody (Center) is for research use only and not for use in diagnostic or therapeutic procedures.**ITGB8 Antibody (Center) - Protein Information**

Name ITGB8 ([HGNC:6163](#))

Function

Integrin alpha-V:beta-8 (ITGAV:ITGB8) is a receptor for fibronectin (PubMed:1918072). It recognizes the sequence R-G-D in its ligands (PubMed:1918072). Integrin alpha-V:beta-6 (ITGAV:ITGB6) mediates R-G-D-dependent release of transforming growth factor beta-1 (TGF-beta-1) from regulatory Latency-associated peptide (LAP), thereby playing a key role in TGF-beta-1 activation on the surface of activated regulatory T-cells (Tregs) (Probable). Required during vasculogenesis (By similarity).

Cellular Location

Cell membrane; Single-pass type I membrane protein

Tissue Location

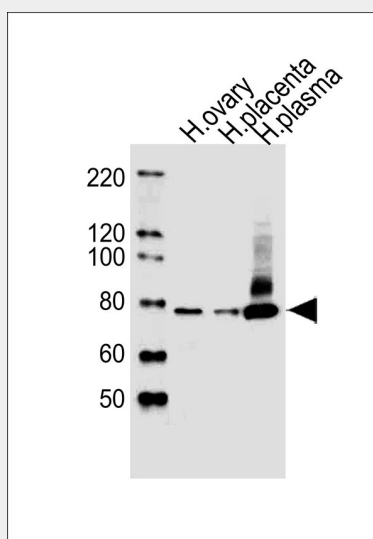
Placenta, kidney, brain, ovary, uterus and in several transformed cells. Transiently expressed in 293 human embryonic kidney cells.

ITGB8 Antibody (Center) - Protocols

Provided below are standard protocols that you may find useful for product applications.

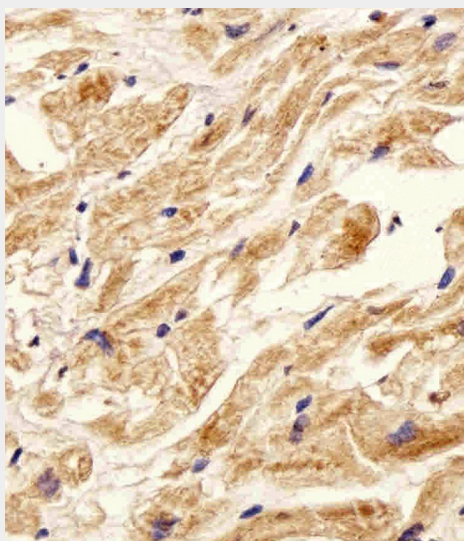
- [Western Blot](#)
- [Blocking Peptides](#)
- [Dot Blot](#)
- [Immunohistochemistry](#)
- [Immunofluorescence](#)
- [Immunoprecipitation](#)
- [Flow Cytometry](#)
- [Cell Culture](#)

ITGB8 Antibody (Center) - Images



All lanes : Anti-ITGB8 Antibody (Center) at 1:1000 dilution Lane 1: human ovary lysates Lane 2: human placenta lysates Lane 3: human plasma lysates Lysates/proteins at 20 µg per lane. Secondary Goat Anti-Rabbit IgG, (H+L), Peroxidase conjugated at 1/10000 dilution Predicted band

size : 86 kDa Blocking/Dilution buffer: 5% NFDM/TBST.



Immunohistochemical analysis of paraffin-embedded H. heart section using ITGB8 Antibody (Center)(Cat#AW5424). AW5424 was diluted at 1:25 dilution. A undiluted biotinylated goat polyvalent antibody was used as the secondary, followed by DAB staining.

ITGB8 Antibody (Center) - Background

Integrin alpha-V/beta-8 is a receptor for fibronectin.

ITGB8 Antibody (Center) - References

- Moyle M.,et al.J. Biol. Chem. 266:19650-19658(1991).
Scherer S.W.,et al.Science 300:767-772(2003).
Mural R.J.,et al.Submitted (JUL-2005) to the EMBL/GenBank/DDBJ databases.
Hillier L.W.,et al.Nature 424:157-164(2003).