

NAPG Antibody (Center)
Purified Rabbit Polyclonal Antibody (Pab)
Catalog # AW5462

Specification

NAPG Antibody (Center) - Product Information

Application	WB,E
Primary Accession	O99747
Other Accession	O9CWZ7 , P81127
Reactivity	Human, Mouse
Host	Rabbit
Clonality	Polyclonal
Calculated MW	H=35;M=35 KDa
Isotype	Rabbit IgG
Antigen Source	HUMAN

NAPG Antibody (Center) - Additional Information

Gene ID 8774

Antigen Region
119-152

Other Names

Gamma-soluble NSF attachment protein, SNAP-gamma, N-ethylmaleimide-sensitive factor attachment protein gamma, NAPG, SNAPG

Dilution

WB~~1:1000

Target/Specificity

This NAPG antibody is generated from a rabbit immunized with a KLH conjugated synthetic peptide between 119-152 amino acids from the Central region of human NAPG.

Format

Purified polyclonal antibody supplied in PBS with 0.09% (W/V) sodium azide. This antibody is purified through a protein A column, followed by peptide affinity purification.

Storage

Maintain refrigerated at 2-8°C for up to 2 weeks. For long term storage store at -20°C in small aliquots to prevent freeze-thaw cycles.

Precautions

NAPG Antibody (Center) is for research use only and not for use in diagnostic or therapeutic procedures.

NAPG Antibody (Center) - Protein Information

Name NAPG ([HGNC:7642](#))

Function

Required for vesicular transport between the endoplasmic reticulum and the Golgi apparatus.

Cellular Location

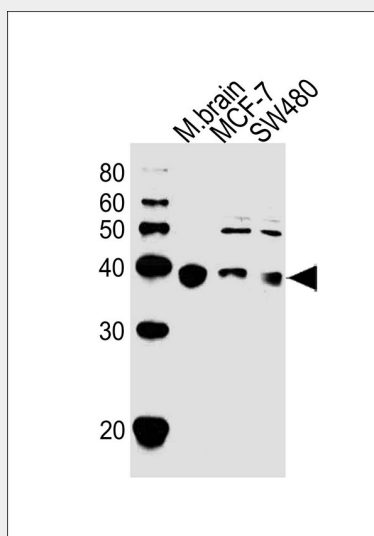
Membrane {ECO:0000250|UniProtKB:P81127}; Peripheral membrane protein {ECO:0000250|UniProtKB:P81127}. Golgi apparatus {ECO:0000250|UniProtKB:Q9CWZ7}

NAPG Antibody (Center) - Protocols

Provided below are standard protocols that you may find useful for product applications.

- [Western Blot](#)
- [Blocking Peptides](#)
- [Dot Blot](#)
- [Immunohistochemistry](#)
- [Immunofluorescence](#)
- [Immunoprecipitation](#)
- [Flow Cytometry](#)
- [Cell Culture](#)

NAPG Antibody (Center) - Images



All lanes : Anti-NAPG Antibody (Center) at 1:1000 dilution Lane 1: mouse brain lysates Lane 2: MCF-7 whole cell lysates Lane 3: SW480 whole cell lysates Lysates/proteins at 20 µg per lane. Secondary Goat Anti-Rabbit IgG, (H+L), Peroxidase conjugated at 1/10000 dilution Predicted band size : 35 kDa Blocking/Dilution buffer: 5% NFDN/TBST.

NAPG Antibody (Center) - Background

Required for vesicular transport between the endoplasmic reticulum and the Golgi apparatus.

NAPG Antibody (Center) - References

Lemons P.P., et al. Blood 90:1490-1500(1997).
Chen D., et al. J. Biol. Chem. 276:13127-13135(2001).

Rush J.,et al.Nat. Biotechnol. 23:94-101(2005).
Dephoure N.,et al.Proc. Natl. Acad. Sci. U.S.A. 105:10762-10767(2008).
Burkard T.R.,et al.BMC Syst. Biol. 5:17-17(2011).