

**NDUFA12 Antibody (N-term)**  
**Purified Rabbit Polyclonal Antibody (Pab)**  
**Catalog # AW5465****Specification**

---

**NDUFA12 Antibody (N-term) - Product Information**

Application	WB,E
Primary Accession	<a href="#">O9UI09</a>
Reactivity	Human, Mouse
Host	Rabbit
Clonality	Polyclonal
Calculated MW	H=17,7;M=17 KDa
Isotype	Rabbit IgG
Antigen Source	HUMAN

**NDUFA12 Antibody (N-term) - Additional Information****Gene ID** 55967**Antigen Region**  
34-68**Other Names**

NADH dehydrogenase [ubiquinone] 1 alpha subcomplex subunit 12, 13 kDa  
differentiation-associated protein, Complex I-B172, CI-B172, CIB172, NADH-ubiquinone  
oxidoreductase subunit B172, NDUFA12, DAP13

**Dilution**

WB~~1:1000

**Target/Specificity**

This NDUFA12 antibody is generated from a rabbit immunized with a KLH conjugated synthetic peptide between 34-68 amino acids from the N-terminal region of human NDUFA12.

**Format**

Purified polyclonal antibody supplied in PBS with 0.09% (W/V) sodium azide. This antibody is purified through a protein A column, followed by peptide affinity purification.

**Storage**

Maintain refrigerated at 2-8°C for up to 2 weeks. For long term storage store at -20°C in small aliquots to prevent freeze-thaw cycles.

**Precautions**

NDUFA12 Antibody (N-term) is for research use only and not for use in diagnostic or therapeutic procedures.

**NDUFA12 Antibody (N-term) - Protein Information**

**Name** NDUFA12

**Synonyms** DAP13

**Function**

Accessory subunit of the mitochondrial membrane respiratory chain NADH dehydrogenase (Complex I), that is believed not to be involved in catalysis. Complex I functions in the transfer of electrons from NADH to the respiratory chain. The immediate electron acceptor for the enzyme is believed to be ubiquinone.

**Cellular Location**

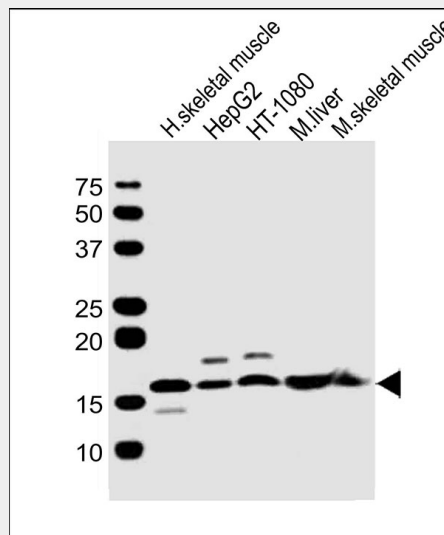
Mitochondrion inner membrane; Peripheral membrane protein; Matrix side

**NDUFA12 Antibody (N-term) - Protocols**

Provided below are standard protocols that you may find useful for product applications.

- [Western Blot](#)
- [Blocking Peptides](#)
- [Dot Blot](#)
- [Immunohistochemistry](#)
- [Immunofluorescence](#)
- [Immunoprecipitation](#)
- [Flow Cytometry](#)
- [Cell Culture](#)

**NDUFA12 Antibody (N-term) - Images**



All lanes : Anti-NDUFA12 Antibody (N-term) at 1:1000 dilution Lane 1: human skeletal muscle lysates Lane 2: HepG2 whole cell lysates Lane 3: HT-1080 whole cell lysates Lane 4: mouse liver lysates Lane 5: mouse skeletal muscle lysates Lysates/proteins at 20 µg per lane. Secondary Goat Anti-Rabbit IgG, (H+L), Peroxidase conjugated at 1/10000 dilution Predicted band size : 17 kDa Blocking/Dilution buffer: 5% NFDM/TBST.

**NDUFA12 Antibody (N-term) - Background**

Accessory subunit of the mitochondrial membrane respiratory chain NADH dehydrogenase

(Complex I), that is believed not to be involved in catalysis. Complex I functions in the transfer of electrons from NADH to the respiratory chain. The immediate electron acceptor for the enzyme is believed to be ubiquinone.

#### **NDUFA12 Antibody (N-term) - References**

- Triepels R., et al. Hum. Genet. 106:385-391(2000).  
Hu R.-M., et al. Proc. Natl. Acad. Sci. U.S.A. 97:9543-9548(2000).  
Kalnina N., et al. Submitted (MAY-2003) to the EMBL/GenBank/DDBJ databases.  
Scherer S.E., et al. Nature 440:346-351(2006).  
Murray J., et al. J. Biol. Chem. 278:13619-13622(2003).