

**(Mouse) Scx Antibody (N-term)**  
**Purified Rabbit Polyclonal Antibody (Pab)**  
**Catalog # AW5469**

**Specification**

---

**(Mouse) Scx Antibody (N-term) - Product Information**

Application	WB, IHC-P,E
Primary Accession	<a href="#">Q64124</a>
Other Accession	<a href="#">Q7RTU7</a>
Reactivity	Mouse
Predicted	Human
Host	Rabbit
Clonality	Polyclonal
Calculated MW	M=22;H=22 KDa
Isotype	Rabbit IgG
Antigen Source	HUMAN

**(Mouse) Scx Antibody (N-term) - Additional Information**

**Gene ID** 20289

**Antigen Region**  
69-102

**Other Names**  
Basic helix-loop-helix transcription factor scleraxis, Scx

**Dilution**  
WB~~1:1000  
IHC-P~~1:25

**Target/Specificity**

This mouse Scx antibody is generated from a rabbit immunized with a KLH conjugated synthetic peptide between 69-102 amino acids from the N-terminal region of mouse Scx.

**Format**

Purified polyclonal antibody supplied in PBS with 0.09% (W/V) sodium azide. This antibody is purified through a protein A column, followed by peptide affinity purification.

**Storage**

Maintain refrigerated at 2-8°C for up to 2 weeks. For long term storage store at -20°C in small aliquots to prevent freeze-thaw cycles.

**Precautions**

(Mouse) Scx Antibody (N-term) is for research use only and not for use in diagnostic or therapeutic procedures.

**(Mouse) Scx Antibody (N-term) - Protein Information**

**Name** Scx**Function**

Plays an early essential role in mesoderm formation, as well as a later role in formation of somite-derived chondrogenic lineages.

**Cellular Location**

Nucleus {ECO:0000255|PROSITE-ProRule:PRU00981}.

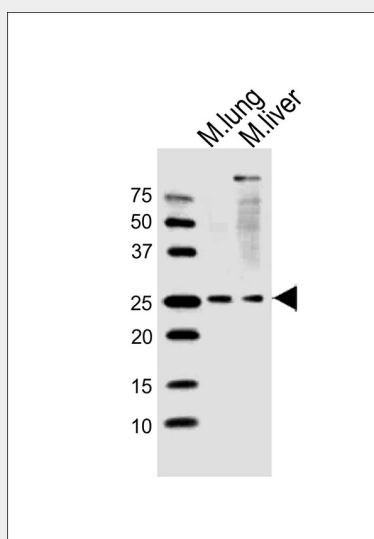
**Tissue Location**

Expressed in mesenchymal precursors of cartilage and in connective tissue. Highly expressed in tendons in the limb, tongue and diaphragm and in cartilage of the bronchi

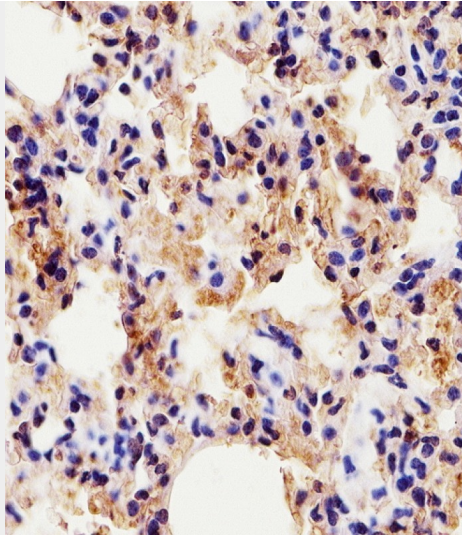
**(Mouse) Scx Antibody (N-term) - Protocols**

Provided below are standard protocols that you may find useful for product applications.

- [Western Blot](#)
- [Blocking Peptides](#)
- [Dot Blot](#)
- [Immunohistochemistry](#)
- [Immunofluorescence](#)
- [Immunoprecipitation](#)
- [Flow Cytometry](#)
- [Cell Culture](#)

**(Mouse) Scx Antibody (N-term) - Images**

All lanes : Anti-Scx Antibody (N-term) at 1:1000 dilution Lane 1: mouse lung lysates Lane 2: mouse liver lysates Lysates/proteins at 20 µg per lane. Secondary Goat Anti-Rabbit IgG, (H+L), Peroxidase conjugated at 1/10000 dilution Predicted band size : 22 kDa Blocking/Dilution buffer: 5% NFDM/TBST.



AW5469 staining Scx in Mouse lung tissue sections by Immunohistochemistry (IHC-P - paraformaldehyde-fixed, paraffin-embedded sections). Tissue was fixed with formaldehyde and blocked with 3% BSA for 0.5 hour at room temperature; antigen retrieval was by heat mediation with a citrate buffer (pH6). Samples were incubated with primary antibody (1/25) for 1 hour at 37°C. A undiluted biotinylated goat polyvalent antibody was used as the secondary antibody.

#### **(Mouse) Scx Antibody (N-term) - Background**

Plays an early essential role in mesoderm formation, as well as a later role in formation of somite-derived chondrogenic lineages.

#### **(Mouse) Scx Antibody (N-term) - References**

Cserjesi P., et al. Development 121:1099-1110(1995).  
Brown D., et al. Development 126:4317-4329(1999).

#### **(Mouse) Scx Antibody (N-term) - Citations**

- [Single-Cell Analysis of the Muscle Stem Cell Hierarchy Identifies Heterotypic Communication Signals Involved in Skeletal Muscle Regeneration](#)