

EXOC3 Antibody (C-term)
Purified Rabbit Polyclonal Antibody (Pab)
Catalog # AW5482**Specification**

EXOC3 Antibody (C-term) - Product Information

Application	WB, IHC-P,E
Primary Accession	O60645
Reactivity	Human
Host	Rabbit
Clonality	Polyclonal
Calculated MW	H=87,74,86 KDa
Isotype	Rabbit IgG
Antigen Source	HUMAN

EXOC3 Antibody (C-term) - Additional Information**Gene ID** 11336**Antigen Region**
524-557**Other Names**

Exocyst complex component 3, Exocyst complex component Sec6, EXOC3, SEC6, SEC6L1

Dilution

WB~~1:1000

IHC-P~~1:25

Target/Specificity

This EXOC3 antibody is generated from a rabbit immunized with a KLH conjugated synthetic peptide between 524-557 amino acids from the C-terminal region of human EXOC3.

Format

Purified polyclonal antibody supplied in PBS with 0.09% (W/V) sodium azide. This antibody is purified through a protein A column, followed by peptide affinity purification.

Storage

Maintain refrigerated at 2-8°C for up to 2 weeks. For long term storage store at -20°C in small aliquots to prevent freeze-thaw cycles.

Precautions

EXOC3 Antibody (C-term) is for research use only and not for use in diagnostic or therapeutic procedures.

EXOC3 Antibody (C-term) - Protein Information**Name** EXOC3

Synonyms SEC6, SEC6L1

Function

Component of the exocyst complex involved in the docking of exocytic vesicles with fusion sites on the plasma membrane.

Cellular Location

Cytoplasm {ECO:0000250|UniProtKB:O54921}. Cytoplasm, perinuclear region {ECO:0000250|UniProtKB:O54921}. Cell projection, growth cone {ECO:0000250|UniProtKB:O54921}. Midbody. Golgi apparatus. Cell projection, neuron projection {ECO:0000250|UniProtKB:Q62825}. Note=Perinuclear in undifferentiated cells. Redistributes to growing neurites and growth cones during neuronal differentiation (By similarity). During mitosis, early recruitment to the midbody requires RALA, but not RALB, and EXOC2. In late stages of cytokinesis, localization to the midbody is RALB- dependent (PubMed:18756269). {ECO:0000250|UniProtKB:O54921, ECO:0000269|PubMed:18756269}

Tissue Location

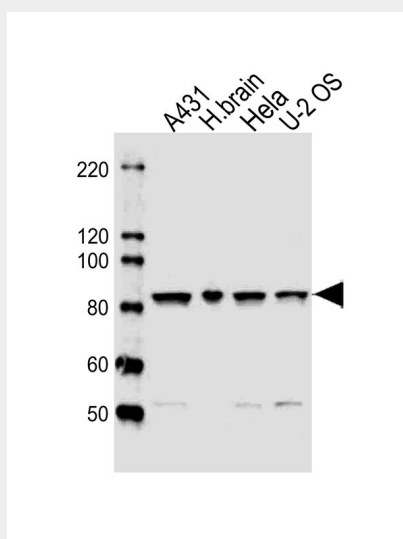
Expressed in epididymis (at protein level).

EXOC3 Antibody (C-term) - Protocols

Provided below are standard protocols that you may find useful for product applications.

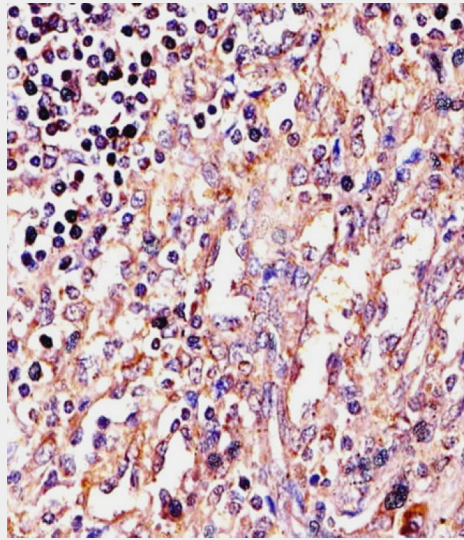
- [Western Blot](#)
- [Blocking Peptides](#)
- [Dot Blot](#)
- [Immunohistochemistry](#)
- [Immunofluorescence](#)
- [Immunoprecipitation](#)
- [Flow Cytometry](#)
- [Cell Culture](#)

EXOC3 Antibody (C-term) - Images



All lanes : Anti-EXOC3 Antibody (C-term) at 1:1000 dilution Lane 1: A431 whole cell lysates Lane 2: human brain lysates Lane 3: Hela whole cell lysates Lane 4: U-2 OS whole cell lysates Lysates/proteins at 20 µg per lane. Secondary Goat Anti-Rabbit IgG, (H+L), Peroxidase conjugated

at 1/10000 dilution Predicted band size : 87 kDa Blocking/Dilution buffer: 5% NFDM/TBST.



AW5482 staining EXOC3 in Human spleen tissue sections by Immunohistochemistry (IHC-P - paraformaldehyde-fixed, paraffin-embedded sections). Tissue was fixed with formaldehyde and blocked with 3% BSA for 0.5 hour at room temperature; antigen retrieval was by heat mediation with a citrate buffer (pH6). Samples were incubated with primary antibody (1/25) for 1 hour at 37°C. A undiluted biotinylated goat polyvalent antibody was used as the secondary antibody.

EXOC3 Antibody (C-term) - Background

Component of the exocyst complex involved in the docking of exocytic vesicles with fusion sites on the plasma membrane.

EXOC3 Antibody (C-term) - References

- Li J., et al. Mol. Cell. Proteomics 9:2517-2528(2010).
- Jikuya H., et al. DNA Res. 10:49-57(2003).
- Schmutz J., et al. Nature 431:268-274(2004).
- Mural R.J., et al. Submitted (JUL-2005) to the EMBL/GenBank/DDBJ databases.
- Yu W., et al. Submitted (MAR-1998) to the EMBL/GenBank/DDBJ databases.