

Pax6 Antibody (C-term)
Purified Rabbit Polyclonal Antibody (Pab)
Catalog # AW5488

Specification

Pax6 Antibody (C-term) - Product Information

Application	WB,E
Primary Accession	P63015
Other Accession	P63016
Reactivity	Mouse, Rat
Host	Rabbit
Clonality	Polyclonal
Calculated MW	M=47;H=47;R=47 KDa
Isotype	Rabbit IgG
Antigen Source	HUMAN

Pax6 Antibody (C-term) - Additional Information

Gene ID 18508

Antigen Region
404-436

Other Names
Paired box protein Pax-6, Oculorhombin, Pax6, Pax-6, Sey

Dilution
WB~~1:1000

Target/Specificity
This Pax6 antibody is generated from a rabbit immunized with a KLH conjugated synthetic peptide between 404-436 amino acids from the C-terminal region of mouse Pax6.

Storage
Maintain refrigerated at 2-8°C for up to 2 weeks. For long term storage store at -20°C in small aliquots to prevent freeze-thaw cycles.

Precautions
Pax6 Antibody (C-term) is for research use only and not for use in diagnostic or therapeutic procedures.

Pax6 Antibody (C-term) - Protein Information

Name Pax6

Synonyms Pax-6, Sey

Function

Transcription factor with important functions in the development of the eye, nose, central nervous system and pancreas. Required for the differentiation of pancreatic islet alpha cells (PubMed:9163426). Competes with PAX4 in binding to a common element in the glucagon, insulin and somatostatin promoters. Regulates specification of the ventral neuron subtypes by establishing the correct progenitor domains (By similarity). Acts as a transcriptional repressor of NFATC1-mediated gene expression (PubMed:23990468).

Cellular Location

Nucleus. [Isoform 3]: Nucleus. Cytoplasm

Tissue Location

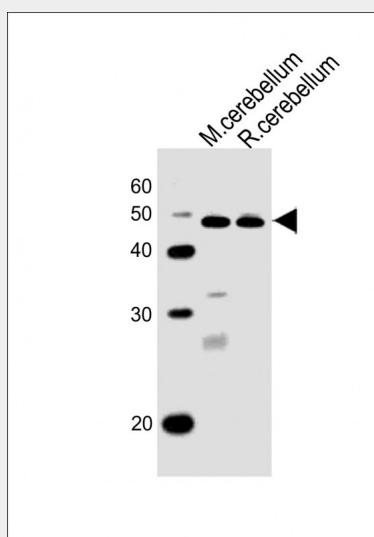
Expressed in osteoclasts. [Isoform 3]: Dominant isoform expressed in the eye, including in the retina and cornea (PubMed:21084637). Weakly expressed in the lens epithelium (PubMed:21084637)

Pax6 Antibody (C-term) - Protocols

Provided below are standard protocols that you may find useful for product applications.

- [Western Blot](#)
- [Blocking Peptides](#)
- [Dot Blot](#)
- [Immunohistochemistry](#)
- [Immunofluorescence](#)
- [Immunoprecipitation](#)
- [Flow Cytometry](#)
- [Cell Culture](#)

Pax6 Antibody (C-term) - Images



All lanes : Anti-Pax6 Antibody (C-term) at 1:1000 dilution Lane 1: mouse cerebellum lysates Lane 2: rat cerebellum lysates Lysates/proteins at 20 µg per lane. Secondary Goat Anti-Rabbit IgG, (H+L), Peroxidase conjugated at 1/10000 dilution Predicted band size : 47 kDa Blocking/Dilution buffer: 5% NFDm/TBST.

Pax6 Antibody (C-term) - Background

Transcription factor with important functions in the development of the eye, nose, central nervous system and pancreas. Required for the differentiation of pancreatic islet alpha cells. Competes with PAX4 in binding to a common element in the glucagon, insulin and somatostatin promoters. Regulates specification of the ventral neuron subtypes by establishing the correct progenitor domains (By similarity).

Pax6 Antibody (C-term) - References

Walther C.,et al.Development 113:1435-1449(1991).
Favor J.,et al.Genetics 159:1689-1700(2001).
Carninci P.,et al.Science 309:1559-1563(2005).
Walther C.,et al.Genomics 11:424-434(1991).
Ton C.C.T.,et al.Genomics 13:251-256(1992).