

RHOXF2B Antibody (Center)
Affinity Purified Rabbit Polyclonal Antibody (Pab)
Catalog # AW5505**Specification**

RHOXF2B Antibody (Center) - Product Information

Application	IF, WB,E
Primary Accession	POC7M4
Reactivity	Human
Host	Rabbit
Clonality	Polyclonal
Calculated MW	H=32 KDa
Isotype	Rabbit IgG
Antigen Source	HUMAN

RHOXF2B Antibody (Center) - Additional Information**Gene ID** 727940**Antigen Region**
110-141**Other Names**
RhoX homeobox family member 2B, RHOXF2B**Dilution**
IF~~1:10~50
WB~~1:1000**Target/Specificity**
This RHOXF2B antibody is generated from rabbits immunized with a KLH conjugated synthetic peptide between 95-141 amino acids from the Central region of human RHOXF2B.**Storage**
Maintain refrigerated at 2-8°C for up to 2 weeks. For long term storage store at -20°C in small aliquots to prevent freeze-thaw cycles.**Precautions**
RHOXF2B Antibody (Center) is for research use only and not for use in diagnostic or therapeutic procedures.**RHOXF2B Antibody (Center) - Protein Information****Name** RHOXF2B ([HGNC:33519](#))**Function**
Transcription factor maybe involved in reproductive processes. Modulates expression of target genes encoding proteins involved in processes relevant to spermatogenesis.

Cellular Location

Nucleus {ECO:0000255|PROSITE-ProRule:PRU00108}.

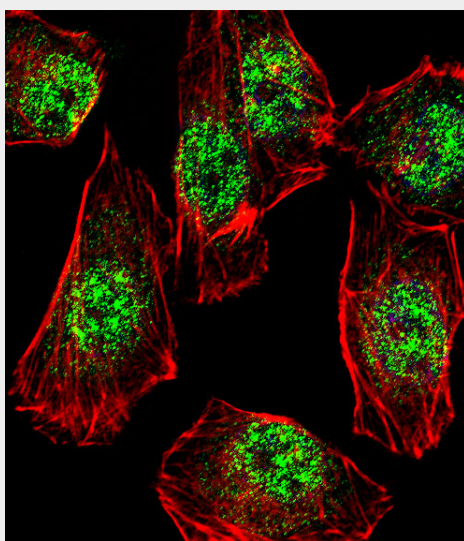
Tissue Location

Expressed in testis, mainly expressed in germ cells, but also detected in somatic cells such as Sertoli cells, Leydig cells and peritubular cells.

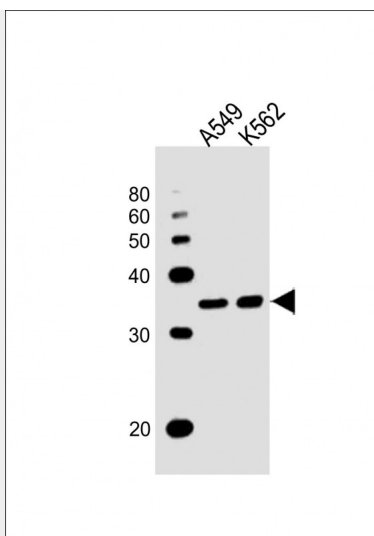
RHOXF2B Antibody (Center) - Protocols

Provided below are standard protocols that you may find useful for product applications.

- [Western Blot](#)
- [Blocking Peptides](#)
- [Dot Blot](#)
- [Immunohistochemistry](#)
- [Immunofluorescence](#)
- [Immunoprecipitation](#)
- [Flow Cytometry](#)
- [Cell Culture](#)

RHOXF2B Antibody (Center) - Images

Fluorescent confocal image of A549 cell stained with RHOXF2B Antibody (Center)(Cat#AW5505).A549 cells were fixed with 4% PFA (20 min), permeabilized with Triton X-100 (0.1%, 10 min), then incubated with RHOXF2B primary antibody (1:25, 1 h at 37°C). For secondary antibody, Alexa Fluor® 488 conjugated donkey anti-rabbit antibody (green) was used (1:400, 50 min at 37°C).Cytoplasmic actin was counterstained with Alexa Fluor® 555 (red) conjugated Phalloidin (7units/ml, 1 h at 37°C). Nuclei were counterstained with DAPI (blue) (10 µg/ml, 10 min).RHOXF2B immunoreactivity is localized to Nucleus significantly.



All lanes : Anti-RHOXF2B Antibody (Center) at 1:1000 dilution Lane 1: A549 whole cell lysates
Lane 2: K562 whole cell lysates Lysates/proteins at 20 μ g per lane. Secondary Goat Anti-Rabbit
IgG, (H+L), Peroxidase conjugated at 1/10000 dilution. Predicted band size : 32 kDa
Blocking/Dilution buffer: 5% NFDM/TBST.

RHOXF2B Antibody (Center) - Background

The function of this protein remains unknown.