

**RPS15 Antibody (N-term)**  
**Affinity Purified Rabbit Polyclonal Antibody (Pab)**  
**Catalog # AW5522**

**Specification**

---

**RPS15 Antibody (N-term) - Product Information**

Application	IHC-P, FC, WB,E
Primary Accession	<a href="#">P62841</a>
Reactivity	Human
Host	Rabbit
Clonality	Polyclonal
Calculated MW	H=17;M=17;R=17 KDa
Isotype	Rabbit IgG
Antigen Source	HUMAN

**RPS15 Antibody (N-term) - Additional Information**

**Gene ID** 6209

**Antigen Region**  
4-38

**Other Names**  
40S ribosomal protein S15, RIG protein, RPS15, RIG

**Dilution**  
IHC-P~~1:50~100  
FC~~1:10~50  
WB~~1:1000

**Target/Specificity**  
This RPS15 antibody is generated from rabbits immunized with a KLH conjugated synthetic peptide between 1-38 amino acids from the N-terminal region of human RPS15.

**Storage**  
Maintain refrigerated at 2-8°C for up to 2 weeks. For long term storage store at -20°C in small aliquots to prevent freeze-thaw cycles.

**Precautions**  
RPS15 Antibody (N-term) is for research use only and not for use in diagnostic or therapeutic procedures.

**RPS15 Antibody (N-term) - Protein Information**

**Name** RPS15

**Synonyms** RIG

**Function**

Component of the small ribosomal subunit (PubMed:<a href="http://www.uniprot.org/citations/23636399" target="\_blank">23636399</a>). The ribosome is a large ribonucleoprotein complex responsible for the synthesis of proteins in the cell (PubMed:<a href="http://www.uniprot.org/citations/23636399" target="\_blank">23636399</a>).

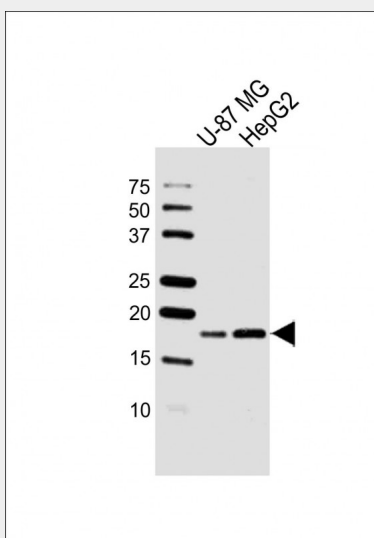
**Cellular Location**

Cytoplasm.

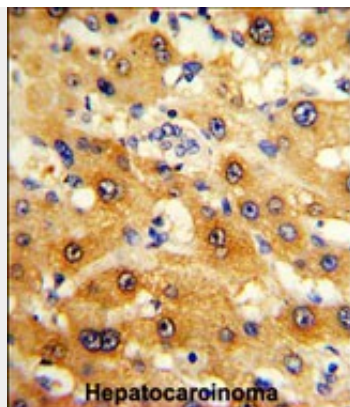
**RPS15 Antibody (N-term) - Protocols**

Provided below are standard protocols that you may find useful for product applications.

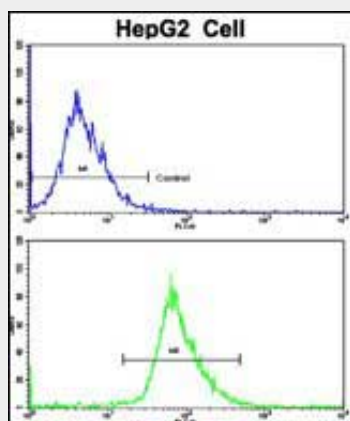
- [Western Blot](#)
- [Blocking Peptides](#)
- [Dot Blot](#)
- [Immunohistochemistry](#)
- [Immunofluorescence](#)
- [Immunoprecipitation](#)
- [Flow Cytometry](#)
- [Cell Culture](#)

**RPS15 Antibody (N-term) - Images**

All lanes : Anti-RPS15 Antibody (N-term) at 1:1000 dilution Lane 1: U-87 MG whole cell lysate Lane 2: HepG2 whole cell lysate Lysates/proteins at 20 µg per lane. Secondary Goat Anti-Rabbit IgG, (H+L), Peroxidase conjugated at 1/10000 dilution. Predicted band size : 17 kDa Blocking/Dilution buffer: 5% NFDM/TBST.



Formalin-fixed and paraffin-embedded human hepatocarcinoma reacted with RPS15 Antibody (N-term), which was peroxidase-conjugated to the secondary antibody, followed by DAB staining. This data demonstrates the use of this antibody for immunohistochemistry; clinical relevance has not been evaluated.



Flow cytometric analysis of HepG2 cells using RPS15 Antibody (N-term)(bottom histogram) compared to a negative control cell (top histogram). FITC-conjugated goat-anti-rabbit secondary antibodies were used for the analysis.

### **RPS15 Antibody (N-term) - Background**

Ribosomes, the organelles that catalyze protein synthesis, consist of a small 40S subunit and a large 60S subunit. Together these subunits are composed of 4 RNA species and approximately 80 structurally distinct proteins. RPS15 is a component of the 40S subunit. The protein belongs to the S19P family of ribosomal proteins. It is located in the cytoplasm.

### **RPS15 Antibody (N-term) - References**

Yu,Y., et.al., Protein Sci. 14 (6), 1438-1446 (2005)