

**ATP5H Antibody (Center)**  
**Affinity Purified Rabbit Polyclonal Antibody (Pab)**  
**Catalog # AW5527**

**Specification**

---

**ATP5H Antibody (Center) - Product Information**

Application	IHC-P, WB, FC,E
Primary Accession	<a href="#">O75947</a>
Reactivity	Human
Host	Rabbit
Clonality	Polyclonal
Calculated MW	H=18;M=19;R=19 KDa
Isotype	Rabbit IgG
Antigen Source	HUMAN

**ATP5H Antibody (Center) - Additional Information**

**Gene ID** 10476

**Antigen Region**  
68-97

**Other Names**  
ATP synthase subunit d, mitochondrial, ATPase subunit d, ATP5H

**Dilution**  
IHC-P~~1:50~100  
WB~~1:1000  
FC~~1:10~50

**Target/Specificity**  
This ATP5H antibody is generated from rabbits immunized with a KLH conjugated synthetic peptide between 68-97 amino acids from the Central region of human ATP5H.

**Storage**  
Maintain refrigerated at 2-8°C for up to 2 weeks. For long term storage store at -20°C in small aliquots to prevent freeze-thaw cycles.

**Precautions**  
ATP5H Antibody (Center) is for research use only and not for use in diagnostic or therapeutic procedures.

**ATP5H Antibody (Center) - Protein Information**

**Name** ATP5PD ([HGNC:845](#))

**Synonyms** ATP5H

### Function

Subunit d, of the mitochondrial membrane ATP synthase complex (F(1)F(0) ATP synthase or Complex V) that produces ATP from ADP in the presence of a proton gradient across the membrane which is generated by electron transport complexes of the respiratory chain (PubMed:<a href="http://www.uniprot.org/citations/37244256" target="\_blank">37244256</a>). ATP synthase complex consist of a soluble F(1) head domain - the catalytic core - and a membrane F(1) domain - the membrane proton channel (PubMed:<a href="http://www.uniprot.org/citations/37244256" target="\_blank">37244256</a>). These two domains are linked by a central stalk rotating inside the F(1) region and a stationary peripheral stalk (PubMed:<a href="http://www.uniprot.org/citations/37244256" target="\_blank">37244256</a>). During catalysis, ATP synthesis in the catalytic domain of F(1) is coupled via a rotary mechanism of the central stalk subunits to proton translocation (Probable). In vivo, can only synthesize ATP although its ATP hydrolase activity can be activated artificially in vitro (By similarity). Part of the complex F(0) domain (PubMed:<a href="http://www.uniprot.org/citations/37244256" target="\_blank">37244256</a>). Part of the complex F(0) domain and the peripheric stalk, which acts as a stator to hold the catalytic alpha(3)beta(3) subcomplex and subunit a/ATP6 static relative to the rotary elements (By similarity).

### Cellular Location

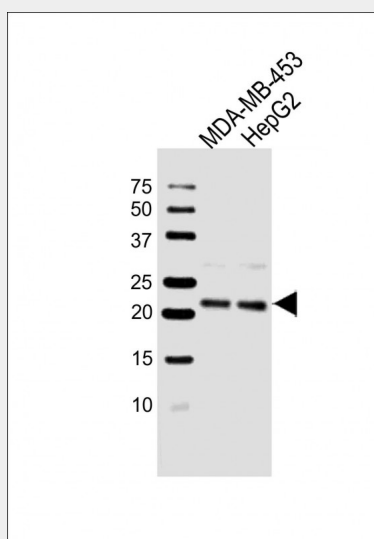
Mitochondrion. Mitochondrion inner membrane.

### ATP5H Antibody (Center) - Protocols

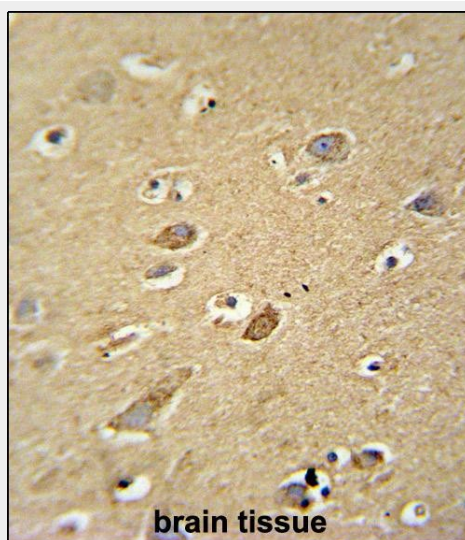
Provided below are standard protocols that you may find useful for product applications.

- [Western Blot](#)
- [Blocking Peptides](#)
- [Dot Blot](#)
- [Immunohistochemistry](#)
- [Immunofluorescence](#)
- [Immunoprecipitation](#)
- [Flow Cytometry](#)
- [Cell Culture](#)

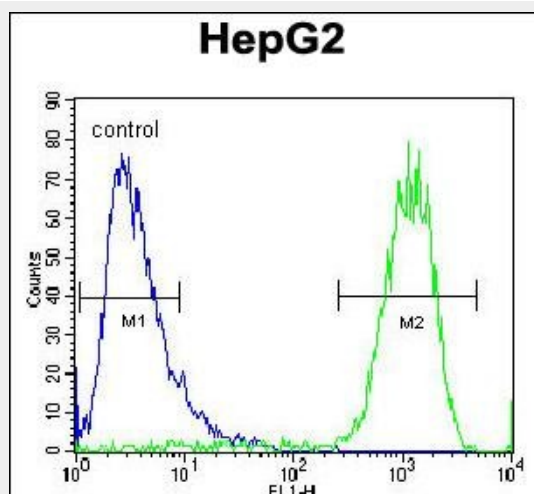
### ATP5H Antibody (Center) - Images



All lanes : Anti-ATP5H Antibody (Center) at 1:1000 dilution Lane 1: MDA-MB-453 whole cell lysate  
Lane 2: HepG2 whole cell lysate Lysates/proteins at 20 µg per lane. Secondary Goat Anti-Rabbit IgG, (H+L), Peroxidase conjugated at 1/10000 dilution. Predicted band size : 18 kDa  
Blocking/Dilution buffer: 5% NFDm/TBST.



ATP5H antibody (Center) (Cat. #AW5527) immunohistochemistry analysis in formalin fixed and paraffin embedded human brain tissue followed by peroxidase conjugation of the secondary antibody and DAB staining. This data demonstrates the use of the ATP5H antibody (Center) for immunohistochemistry. Clinical relevance has not been evaluated.



ATP5H Antibody (Center) (Cat. #AW5527) flow cytometric analysis of HepG2 cells (right histogram) compared to a negative control cell (left histogram). FITC-conjugated goat-anti-rabbit secondary antibodies were used for the analysis.

### ATP5H Antibody (Center) - Background

Mitochondrial ATP synthase catalyzes ATP synthesis, utilizing an electrochemical gradient of protons across the inner membrane during oxidative phosphorylation. It is composed of two linked multi-subunit complexes: the soluble catalytic core, F<sub>1</sub>, and the membrane-spanning component, F<sub>o</sub>, which comprises the proton channel. The F<sub>1</sub> complex consists of 5 different subunits (alpha, beta, gamma, delta, and epsilon) assembled in a ratio of 3 alpha, 3 beta, and a single representative of the other 3. The F<sub>o</sub> seems to have nine subunits (a, b, c, d, e, f, g, F6 and 8). This gene encodes the d subunit of the F<sub>o</sub> complex. Alternatively spliced transcript variants encoding different isoforms have been identified for this gene. In addition, three pseudogenes are located on

chromosomes 9, 12 and 15.

#### **ATP5H Antibody (Center) - References**

Martins-de-Souza, D., et al. J Psychiatr Res 43(11):978-986(2009) Kim, D.W., et al. Cancer Sci. 99(10):1884-1891(2008) Cross, R.L. Nature 427(6973):407-408(2004) Oster, G., et al. Trends Cell Biol. 13(3):114-121(2003) Leyva, J.A., et al. Mol. Membr. Biol. 20(1):27-33(2003)