

FDFT1 Antibody (C-term)
Affinity Purified Rabbit Polyclonal Antibody (Pab)
Catalog # AW5537

Specification

FDFT1 Antibody (C-term) - Product Information

Application	WB,E
Primary Accession	P37268
Reactivity	Human
Host	Rabbit
Clonality	Polyclonal
Calculated MW	H=48,41,38,35,43;M=48 KDa
Isotype	Rabbit IgG
Antigen Source	HUMAN

FDFT1 Antibody (C-term) - Additional Information

Gene ID 2222

Antigen Region
332-361

Other Names

Squalene synthase, SQS, SS, FPP:FPP farnesyltransferase, Farnesyl-diphosphate farnesyltransferase, FDFT1

Dilution

WB~~1:1000

Target/Specificity

This FDFT1 antibody is generated from rabbits immunized with a KLH conjugated synthetic peptide between 332-361 amino acids from the C-terminal region of human FDFT1.

Storage

Maintain refrigerated at 2-8°C for up to 2 weeks. For long term storage store at -20°C in small aliquots to prevent freeze-thaw cycles.

Precautions

FDFT1 Antibody (C-term) is for research use only and not for use in diagnostic or therapeutic procedures.

FDFT1 Antibody (C-term) - Protein Information

Name FDFT1

Function

Catalyzes the condensation of 2 farnesyl pyrophosphate (FPP) moieties to form squalene. Proceeds in two distinct steps. In the first half-reaction, two molecules of FPP react to form the stable

presqualene diphosphate intermediate (PSQPP), with concomitant release of a proton and a molecule of inorganic diphosphate. In the second half-reaction, PSQPP undergoes heterolysis, isomerization, and reduction with NADPH or NADH to form squalene. It is the first committed enzyme of the sterol biosynthesis pathway.

Cellular Location

Endoplasmic reticulum membrane {ECO:0000250|UniProtKB:Q02769}; Multi-pass membrane protein

Tissue Location

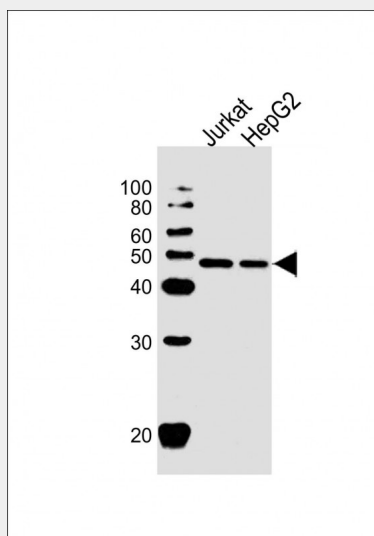
Widely expressed..

FDFT1 Antibody (C-term) - Protocols

Provided below are standard protocols that you may find useful for product applications.

- [Western Blot](#)
- [Blocking Peptides](#)
- [Dot Blot](#)
- [Immunohistochemistry](#)
- [Immunofluorescence](#)
- [Immunoprecipitation](#)
- [Flow Cytometry](#)
- [Cell Culture](#)

FDFT1 Antibody (C-term) - Images



All lanes : Anti-FDFT1 Antibody (C-term) at 1:1000 dilution Lane 1: Jurkat whole cell lysate Lane 2: HepG2 whole cell lysate Lysates/proteins at 20 µg per lane. Secondary Goat Anti-Rabbit IgG, (H+L), Peroxidase conjugated at 1/10000 dilution. Predicted band size : 48 kDa Blocking/Dilution buffer: 5% NFDM/TBST.

FDFT1 Antibody (C-term) - Background

This gene encodes a membrane-associated enzyme located at a branch point in the mevalonate pathway. The encoded protein is the first specific enzyme in cholesterol biosynthesis, catalyzing

the dimerization of two molecules of farnesyl diphosphate in a two-step reaction to form squalene.

FDFT1 Antibody (C-term) - References

Chalasani, N., et al. Gastroenterology 139(5):1567-1576(2010)
Bailey, S.D., et al. Diabetes Care 33(10):2250-2253(2010)
Kovanen, L., et al. Alcohol Alcohol. 45(4):303-311(2010)
Lipkin, S.M., et al. Cancer Prev Res (Phila) 3(5):597-603(2010)
Sjoholm, L.K., et al. J Circadian Rhythms 8, 1 (2010) :