

**LDHA Antibody (Center)**  
**Affinity Purified Rabbit Polyclonal Antibody (Pab)**  
**Catalog # AW5539**

**Specification**

---

**LDHA Antibody (Center) - Product Information**

Application	IHC-P, FC, WB,E
Primary Accession	<a href="#">P00338</a>
Reactivity	Human
Host	Rabbit
Clonality	Polyclonal
Calculated MW	H=40,30,27,37;R=36 KDa
Isotype	Rabbit IgG
Antigen Source	HUMAN

**LDHA Antibody (Center) - Additional Information**

**Gene ID** 3939

**Antigen Region**  
154-182

**Other Names**

L-lactate dehydrogenase A chain, LDH-A, Cell proliferation-inducing gene 19 protein, LDH muscle subunit, LDH-M, Renal carcinoma antigen NY-REN-59, LDHA

**Dilution**

IHC-P~~1:50~100  
FC~~1:10~50  
WB~~1:1000

**Target/Specificity**

This LDHA antibody is generated from rabbits immunized with a KLH conjugated synthetic peptide between 154-182 amino acids from the Central region of human LDHA.

**Storage**

Maintain refrigerated at 2-8°C for up to 2 weeks. For long term storage store at -20°C in small aliquots to prevent freeze-thaw cycles.

**Precautions**

LDHA Antibody (Center) is for research use only and not for use in diagnostic or therapeutic procedures.

**LDHA Antibody (Center) - Protein Information**

**Name** LDHA ([HGNC:6535](#))

**Function**

Interconverts simultaneously and stereospecifically pyruvate and lactate with concomitant interconversion of NADH and NAD(+).

**Cellular Location**

Cytoplasm.

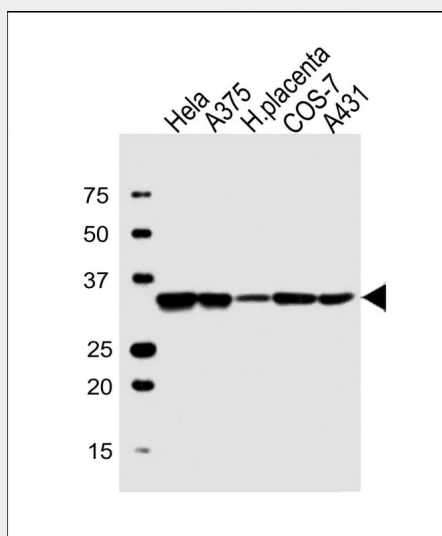
**Tissue Location**

Predominantly expressed in anaerobic tissues such as skeletal muscle and liver.

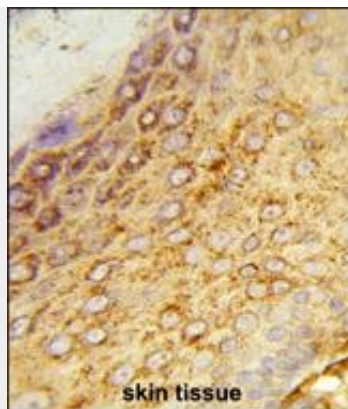
**LDHA Antibody (Center) - Protocols**

Provided below are standard protocols that you may find useful for product applications.

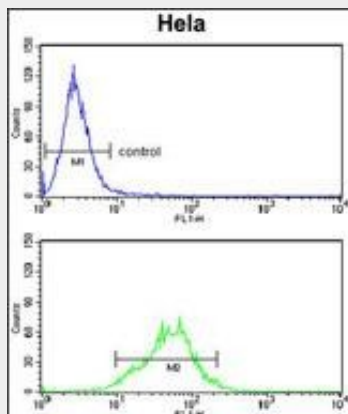
- [Western Blot](#)
- [Blocking Peptides](#)
- [Dot Blot](#)
- [Immunohistochemistry](#)
- [Immunofluorescence](#)
- [Immunoprecipitation](#)
- [Flow Cytometry](#)
- [Cell Culture](#)

**LDHA Antibody (Center) - Images**

All lanes : Anti-LDHA Antibody (Center) at 1:1000 dilution Lane 1: HeLa whole cell lysate Lane 2: A375 whole cell lysate Lane 3: human placenta lysate Lane 4: COS-7 whole cell lysate Lane 5: A431 whole cell lysate Lysates/proteins at 20 µg per lane. Secondary Goat Anti-Rabbit IgG, (H+L), Peroxidase conjugated at 1/10000 dilution. Predicted band size : 36 kDa Blocking/Dilution buffer: 5% NFDM/TBST.



Formalin-fixed and paraffin-embedded human skin tissue reacted with LDHA Antibody (Center), which was peroxidase-conjugated to the secondary antibody, followed by DAB staining. This data demonstrates the use of this antibody for immunohistochemistry; clinical relevance has not been evaluated.



LDHA Antibody (Center) (Cat. #AW5539) flow cytometry analysis of HeLa cells (bottom histogram) compared to a negative control cell (top histogram). FITC-conjugated goat-anti-rabbit secondary antibodies were used for the analysis.

### LDHA Antibody (Center) - Background

LDHA catalyzes the conversion of L-lactate and NAD to pyruvate and NADH in the final step of anaerobic glycolysis. The protein is found predominantly in muscle tissue and belongs to the lactate dehydrogenase family. Mutations in this gene have been linked to exertional myoglobinuria.

### LDHA Antibody (Center) - References

- Zhu, X., et al. Genet. Epidemiol. 34(2):171-187(2010)
- Zhuang, L., et al. Mod. Pathol. 23(1):45-53(2010)
- Zhao, Y.H., et al. Oncogene 28(42):3689-3701(2009)
- Xie, H., et al. Mol. Cancer Ther. 8(3):626-635(2009)
- Koukourakis, M.I., et al. Oncology 77(5):285-292(2009)
- Rikova, K., et al. Cell 131(6):1190-1203(2007)
- Rush, J., et al. Nat. Biotechnol. 23(1):94-101(2005)