

SOX10 Antibody (Center)
Affinity Purified Rabbit Polyclonal Antibody (Pab)
Catalog # AW5567**Specification**

SOX10 Antibody (Center) - Product Information

Application	WB,E
Primary Accession	P56693
Other Accession	Q04888 , A5A763 , Q55170
Reactivity	Human, Rat
Predicted	Mouse
Host	Rabbit
Clonality	Polyclonal
Calculated MW	H=50,31;M=50;R=50 KDa
Isotype	Rabbit IgG
Antigen Source	HUMAN

SOX10 Antibody (Center) - Additional Information**Gene ID** 6663**Antigen Region**
231-259**Other Names**
Transcription factor SOX-10, SOX10**Dilution**
WB~~1:2000**Target/Specificity**
This SOX10 antibody is generated from rabbits immunized with a KLH conjugated synthetic peptide between 231-259 amino acids from the Central region of human SOX10.**Storage**
Maintain refrigerated at 2-8°C for up to 2 weeks. For long term storage store at -20°C in small aliquots to prevent freeze-thaw cycles.**Precautions**
SOX10 Antibody (Center) is for research use only and not for use in diagnostic or therapeutic procedures.**SOX10 Antibody (Center) - Protein Information****Name** SOX10**Function**
Transcription factor that plays a central role in developing and mature glia (By similarity).

Specifically activates expression of myelin genes, during oligodendrocyte (OL) maturation, such as DUSP15 and MYRF, thereby playing a central role in oligodendrocyte maturation and CNS myelination (By similarity). Once induced, MYRF cooperates with SOX10 to implement the myelination program (By similarity). Transcriptional activator of MITF, acting synergistically with PAX3 (PubMed:21965087). Transcriptional activator of MBP, via binding to the gene promoter (By similarity).

Cellular Location

Cytoplasm. Nucleus. Mitochondrion outer membrane {ECO:0000250|UniProtKB:Q04888}; Peripheral membrane protein {ECO:0000250|UniProtKB:Q04888}; Cytoplasmic side {ECO:0000250|UniProtKB:Q04888}

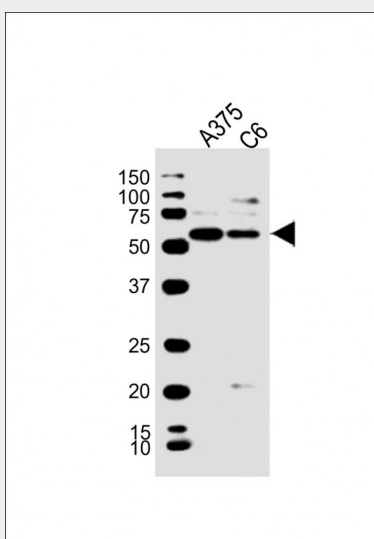
Tissue Location

Expressed in fetal brain and in adult brain, heart, small intestine and colon

SOX10 Antibody (Center) - Protocols

Provided below are standard protocols that you may find useful for product applications.

- [Western Blot](#)
- [Blocking Peptides](#)
- [Dot Blot](#)
- [Immunohistochemistry](#)
- [Immunofluorescence](#)
- [Immunoprecipitation](#)
- [Flow Cytometry](#)
- [Cell Culture](#)

SOX10 Antibody (Center) - Images

All lanes : Anti-SOX10 Antibody (Center) at 1:2000 dilution Lane 1: A375 whole cell lysate Lane 2: C6 whole cell lysate Lysates/proteins at 20 µg per lane. Secondary Goat Anti-Rabbit IgG, (H+L), Peroxidase conjugated at 1/10000 dilution. Predicted band size : 50 kDa Blocking/Dilution buffer: 5% NFD/MTBST.