

**MMP25 Antibody (C-term)**  
**Purified Rabbit Polyclonal Antibody (Pab)**  
**Catalog # AW5583****Specification**

---

**MMP25 Antibody (C-term) - Product Information**

Application	WB,E
Primary Accession	<a href="#">Q9NPA2</a>
Reactivity	Human
Host	Rabbit
Clonality	Polyclonal
Calculated MW	H=63 KDa
Isotype	Rabbit IgG
Antigen Source	HUMAN

**MMP25 Antibody (C-term) - Additional Information****Gene ID** 64386**Antigen Region**  
470-499**Other Names**

Matrix metalloproteinase-25, MMP-25, 3424-, Leukolysin, Membrane-type matrix metalloproteinase 6, MT-MMP 6, MTMMP6, Membrane-type-6 matrix metalloproteinase, MT6-MMP, MT6MMP, MMP25, MMP20, MMPL1, MT6MMP

**Dilution**

WB~~1:1000

**Target/Specificity**

This MMP25 antibody is generated from rabbits immunized with a KLH conjugated synthetic peptide between 470-499 amino acids from the C-terminal region of human MMP25.

**Storage**

Maintain refrigerated at 2-8°C for up to 2 weeks. For long term storage store at -20°C in small aliquots to prevent freeze-thaw cycles.

**Precautions**

MMP25 Antibody (C-term) is for research use only and not for use in diagnostic or therapeutic procedures.

**MMP25 Antibody (C-term) - Protein Information****Name** MMP25**Synonyms** MMP20, MMPL1, MT6MMP

**Function**

May activate progelatinase A.

**Cellular Location**

Cell membrane; Lipid-anchor, GPI-anchor; Extracellular side. Secreted, extracellular space, extracellular matrix

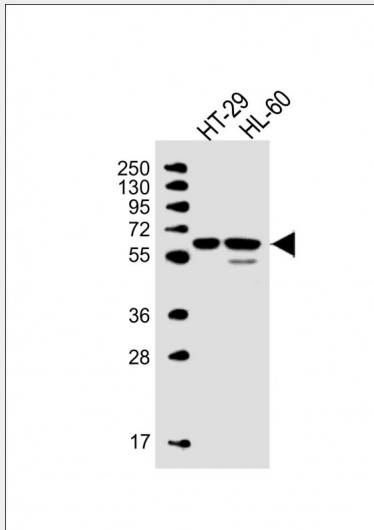
**Tissue Location**

Expressed predominantly in leukocytes, lung and spleen. Expressed also in colon carcinoma, astrocytoma and glioblastomas

**MMP25 Antibody (C-term) - Protocols**

Provided below are standard protocols that you may find useful for product applications.

- [Western Blot](#)
- [Blocking Peptides](#)
- [Dot Blot](#)
- [Immunohistochemistry](#)
- [Immunofluorescence](#)
- [Immunoprecipitation](#)
- [Flow Cytometry](#)
- [Cell Culture](#)

**MMP25 Antibody (C-term) - Images**

All lanes : Anti-MMP25 Antibody (R485) at 1:1000 dilution Lane 1: HT-29 whole cell lysate Lane 2: HL-60 whole cell lysate Lysates/proteins at 20 µg per lane. Secondary Goat Anti-Rabbit IgG, (H+L), Peroxidase conjugated at 1/10000 dilution. Predicted band size : 63 kDa Blocking/Dilution buffer: 5% NFD/MTBST.

**MMP25 Antibody (C-term) - Background**

Proteins of the matrix metalloproteinase (MMP) family are involved in the breakdown of extracellular matrix in normal physiological processes, such as embryonic development, reproduction, and tissue remodeling, as well as in disease processes, such as arthritis and metastasis. Most MMPs are secreted as inactive proproteins which are activated when cleaved by

extracellular proteinases. However, MMP25 is a member of the membrane-type MMP (MT-MMP) subfamily; each member of this subfamily contains a potential transmembrane domain suggesting that these proteins are expressed at the cell surface rather than secreted. In addition, it is thought that this protein is activated intracellularly by furin-like enzymes. This protein activates MMP2 by cleavage. The gene has previously been referred to as MMP20 but has been renamed matrix metalloproteinase 25 (MMP25).

#### **MMP25 Antibody (C-term) - References**

Matsuda, A., et al., J. Biol. Chem. 278(38):36350-36357 (2003).  
Velasco, G., et al., Cancer Res. 60(4):877-882 (2000).  
Nagase, H., et al., J. Biol. Chem. 274(31):21491-21494 (1999).  
Pei, D., Cell Res. 9(4):291-303 (1999).  
Kojima, S., et al., FEBS Lett. 480 (2-3), 142-146 (2000).