

RPLP2 Antibody (N-Term)
Affinity Purified Rabbit Polyclonal Antibody (Pab)
Catalog # AW5591**Specification**

RPLP2 Antibody (N-Term) - Product Information

| | |
|-------------------|--|
| Application | WB,E |
| Primary Accession | P05387 |
| Other Accession | P42899 , P99027 , P19943 |
| Reactivity | Human |
| Predicted | Bovine, Mouse, Rabbit |
| Host | Rabbit |
| Clonality | Polyclonal |
| Calculated MW | H=12;M=12;R=12 KDa |
| Isotype | Rabbit IgG |
| Antigen Source | HUMAN |

RPLP2 Antibody (N-Term) - Additional Information**Gene ID** 6181**Antigen Region**
13-41**Other Names**

60S acidic ribosomal protein P2, Renal carcinoma antigen NY-REN-44, RPLP2, D11S2243E, RPP2

Dilution

WB~~1:2000

Target/Specificity

This RPLP2 antibody is generated from rabbits immunized with a KLH conjugated synthetic peptide between 13-41 amino acids from the N-terminal region of human RPLP2.

Storage

Maintain refrigerated at 2-8°C for up to 2 weeks. For long term storage store at -20°C in small aliquots to prevent freeze-thaw cycles.

Precautions

RPLP2 Antibody (N-Term) is for research use only and not for use in diagnostic or therapeutic procedures.

RPLP2 Antibody (N-Term) - Protein Information**Name** RPLP2**Synonyms** D11S2243E, RPP2

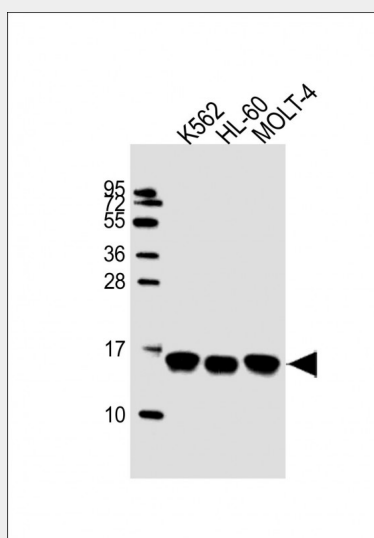
Function

Plays an important role in the elongation step of protein synthesis.

RPLP2 Antibody (N-Term) - Protocols

Provided below are standard protocols that you may find useful for product applications.

- [Western Blot](#)
- [Blocking Peptides](#)
- [Dot Blot](#)
- [Immunohistochemistry](#)
- [Immunofluorescence](#)
- [Immunoprecipitation](#)
- [Flow Cytometry](#)
- [Cell Culture](#)

RPLP2 Antibody (N-Term) - Images

All lanes : Anti-RPLP2 Antibody (N-Term) at 1:2000 dilution Lane 1: K562 whole cell lysate Lane 2: HL-60 whole cell lysate Lane 3: MOLT-4 whole cell lysate Lysates/proteins at 20 µg per lane. Secondary Goat Anti-Rabbit IgG, (H+L), Peroxidase conjugated at 1/10000 dilution. Predicted band size : 12 kDa Blocking/Dilution buffer: 5% NFDm/TBST.

RPLP2 Antibody (N-Term) - Background

RPLP2 consist of a small 40S subunit and a large 60S subunit. Together these subunits are composed of 4 RNA species and approximately 80 structurally distinct proteins. This protein encodes a ribosomal phosphoprotein that is a component of the 60S subunit. The protein, which is a functional equivalent of the E. coli L7/L12 ribosomal protein, belongs to the L12P family of ribosomal proteins. It plays an important role in the elongation step of protein synthesis. Unlike most ribosomal proteins, which are basic, the encoded protein is acidic. Its C-terminal end is nearly identical to the C-terminal ends of the ribosomal phosphoproteins P0 and P1. The P2 protein can interact with P0 and P1 to form a pentameric complex consisting of P1 and P2 dimers, and a P0 monomer. The protein is located in the cytoplasm. As is typical for genes encoding ribosomal proteins, there are multiple processed pseudogenes of this gene dispersed through the genome.

RPLP2 Antibody (N-Term) - References

Martinez-Azorin,F. FEBS Lett. 582 (20), 3029-3032 (2008) Martinez-Azorin,F. Biochem. J. 413 (3), 527-534 (2008) Sugiyama,N. Mol. Cell Proteomics 6 (6), 1103-1109 (2007)