

IGF2BP2 Antibody (C-term)
Affinity Purified Rabbit Polyclonal Antibody (Pab)
Catalog # AW5603

Specification

IGF2BP2 Antibody (C-term) - Product Information

Application	FC, IHC-P, WB,E
Primary Accession	Q9Y6M1
Other Accession	Q5SF07 , Q5RB68
Reactivity	Human
Predicted	Mouse
Host	Rabbit
Clonality	Polyclonal
Calculated MW	H=66,62,55,59;M=66,59 KDa
Isotype	Rabbit IgG
Antigen Source	HUMAN

IGF2BP2 Antibody (C-term) - Additional Information

Gene ID 10644

Antigen Region
530-556

Other Names

Insulin-like growth factor 2 mRNA-binding protein 2, IGF2 mRNA-binding protein 2, IMP-2, Hepatocellular carcinoma autoantigen p62, IGF-II mRNA-binding protein 2, VICKZ family member 2, IGF2BP2, IMP2, VICKZ2

Dilution

FC~~1:10~50
IHC-P~~1:50~100
WB~~1:2000

Target/Specificity

This IGF2BP2 antibody is generated from rabbits immunized with a KLH conjugated synthetic peptide between 530-556 amino acids from the C-terminal region of human IGF2BP2.

Storage

Maintain refrigerated at 2-8°C for up to 2 weeks. For long term storage store at -20°C in small aliquots to prevent freeze-thaw cycles.

Precautions

IGF2BP2 Antibody (C-term) is for research use only and not for use in diagnostic or therapeutic procedures.

IGF2BP2 Antibody (C-term) - Protein Information

Name IGF2BP2

Synonyms IMP2, VICKZ2

Function

RNA-binding factor that recruits target transcripts to cytoplasmic protein-RNA complexes (mRNPs). This transcript 'caging' into mRNPs allows mRNA transport and transient storage. It also modulates the rate and location at which target transcripts encounter the translational apparatus and shields them from endonuclease attacks or microRNA-mediated degradation (By similarity). Preferentially binds to N6-methyladenosine (m6A)-containing mRNAs and increases their stability (PubMed:29476152). Binds to the 5'-UTR of the insulin-like growth factor 2 (IGF2) mRNAs (PubMed:9891060). Binding is isoform- specific. Binds to beta-actin/ACTB and MYC transcripts. Increases MYC mRNA stability by binding to the coding region instability determinant (CRD) and binding is enhanced by m6A-modification of the CRD (PubMed:29476152).

Cellular Location

Nucleus. Cytoplasm. Cytoplasm, P-body. Cytoplasm, Stress granule. Note=Localized in cytoplasmic mRNP granules containing untranslated mRNAs. Localizes at the connecting piece and the tail of the spermatozoa. In response to cellular stress, such as oxidative stress, recruited to stress granules

Tissue Location

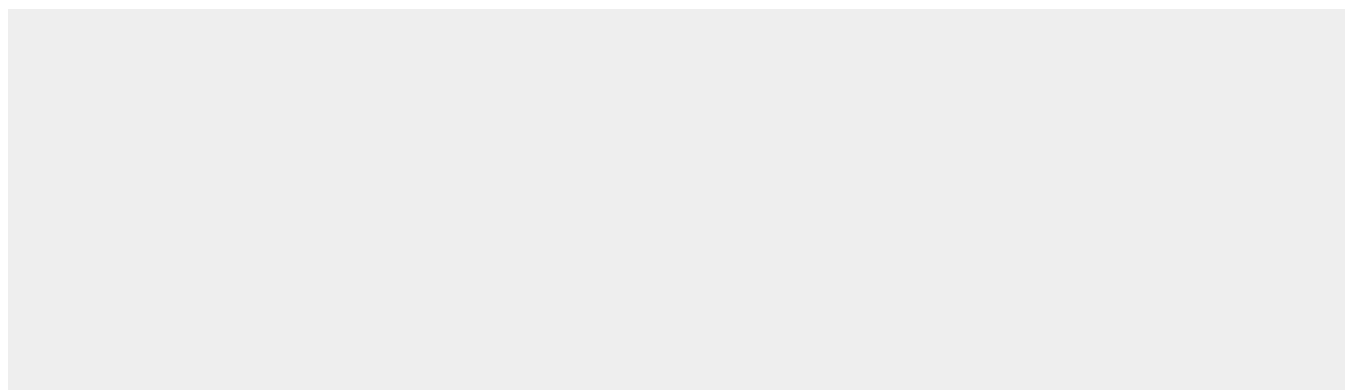
Expressed in oocytes, granulosa cells of small and growing follicles, Leydig cells, spermatogonia and semen (at protein level). Expressed in testicular cancer (at protein level). Expressed weakly in heart, placenta, skeletal muscle, bone marrow, colon, kidney, salivary glands, testis and pancreas. Detected in fetal liver, fetal ovary, gonocytes and interstitial cells of the testis

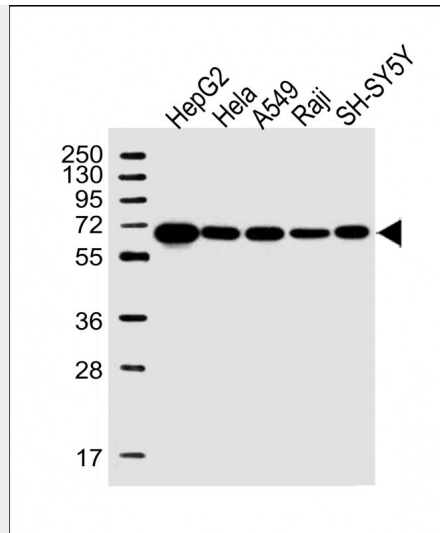
IGF2BP2 Antibody (C-term) - Protocols

Provided below are standard protocols that you may find useful for product applications.

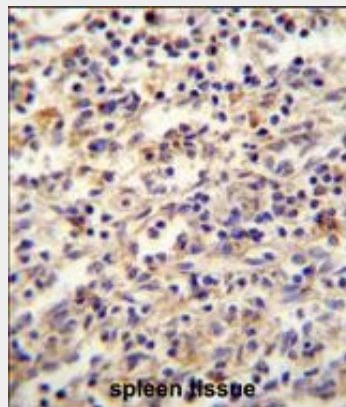
- [Western Blot](#)
- [Blocking Peptides](#)
- [Dot Blot](#)
- [Immunohistochemistry](#)
- [Immunofluorescence](#)
- [Immunoprecipitation](#)
- [Flow Cytometry](#)
- [Cell Culture](#)

IGF2BP2 Antibody (C-term) - Images

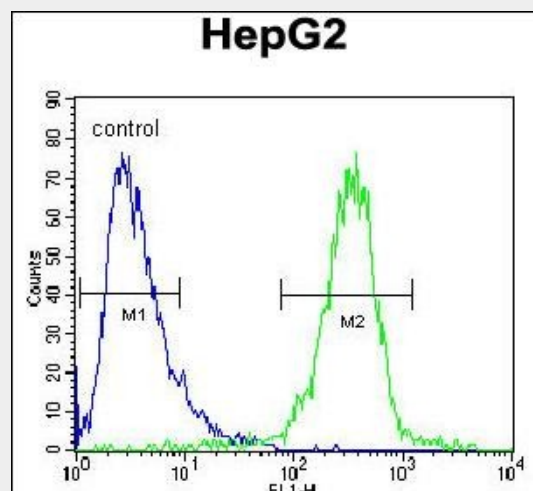




All lanes : Anti-IGF2BP2 Antibody (C-term) at 1:2000 dilution Lane 1: HepG2 whole cell lysate Lane 2: Hela whole cell lysate Lane 3: A549 whole cell lysate Lane 4: Raji whole cell lysate Lane 5: SH-SY5Y whole cell lysate Lysates/proteins at 20 μ g per lane. Secondary Goat Anti-Rabbit IgG, (H+L), Peroxidase conjugated at 1/10000 dilution. Predicted band size : 66 kDa Blocking/Dilution buffer: 5% NFDM/TBST.



IGF2BP2 antibody(C-term) (Cat. #AW5603) immunohistochemistry analysis in formalin fixed and paraffin embedded human spleen tissue followed by peroxidase conjugation of the secondary antibody and DAB staining. This data demonstrates the use of the IGF2BP2 antibody(C-term) for immunohistochemistry. Clinical relevance has not been evaluated.



IGF2BP2 Antibody (C-term) (Cat. #AW5603) flow cytometric analysis of HepG2 cells (right histogram) compared to a negative control cell (left histogram). FITC-conjugated goat-anti-rabbit secondary antibodies were used for the analysis.

IGF2BP2 Antibody (C-term) - Background

This gene encodes a member of the IGF-II mRNA-binding protein (IMP) family. The protein encoded by this gene contains several four KH domains and two RRM domains. It functions by binding to the 5' UTR of the insulin-like growth factor 2 (IGF2) mRNA and regulating IGF2 translation. Alternate transcriptional splice variants, encoding different isoforms, have been characterized.

IGF2BP2 Antibody (C-term) - References

Bailey, S.D., et al. Diabetes Care 33(10):2250-2253(2010)
Pechlivanis, S., et al. Arterioscler. Thromb. Vasc. Biol. 30(9):1867-1872(2010)
Henl, M., et al. Diabetes (2010) In press :
Rodriguez, S., et al. Growth Horm. IGF Res. 20(4):310-318(2010)
Voight, B.F., et al. Nat. Genet. 42(7):579-589(2010)