

**Anti-Herceptin monoclonal antibody (1402CT551.4.30)**  
**Purified Mouse Monoclonal Antibody (Mab)**  
**Catalog # AW5688****Specification**

---

**Anti-Herceptin monoclonal antibody (1402CT551.4.30) - Product Information**

Application	sELISA,E
Host	Mouse
Clonality	Monoclonal
Isotype	IgG1 $\kappa$
Antigen Source	A recombinant IgG1 kappa, humanized monoclonal antibody that selectively binds with high affinity in a cell-based assay ( $K_d = 5$ nM) to the extracellular domain of the human epidermal growth factor receptor protein. Produced in CHO cell culture. In December 2017, FDA approved Ogivri (trastuzumab-dkst) as a biosimilar to Herceptin (trastuzumab) for the treatment of patients with breast or metastatic stomach cancer (gastric or gastroesophageal junction adenocarcinoma) whose tumors overexpress the HER2 gene (HER2+). It displays biosimilar properties as Herceptin according to clinical data. While Ogivri is the first biosimilar approved in the U.S. for the treatment of breast cancer or stomach cancer, it is the second biosimilar approved in the U.S. for the treatment of cancer.

**Anti-Herceptin monoclonal antibody (1402CT551.4.30) - Additional Information****Other Names**

Anti-Trastuzumab monoclonal antibody

**Dilution**

sELISA~~N/A

**Target/Specificity**

Mouse monoclonal antibody raised against Trastuzumab.

**Format**

Purified monoclonal antibody supplied in PBS with 0.09% (W/V) sodium azide. This antibody is purified through a protein G column, followed by dialysis against PBS.

**Storage**

Maintain refrigerated at 2-8°C for up to 2 weeks. For long term storage store at -20°C in small aliquots to prevent freeze-thaw cycles.

### Precautions

Anti-Herceptin monoclonal antibody (1402CT551.4.30) is for research use only and not for use in diagnostic or therapeutic procedures.

### Anti-Herceptin monoclonal antibody (1402CT551.4.30) - Protein Information

### Anti-Herceptin monoclonal antibody (1402CT551.4.30) - Protocols

Provided below are standard protocols that you may find useful for product applications.

- [Western Blot](#)
- [Blocking Peptides](#)
- [Dot Blot](#)
- [Immunohistochemistry](#)
- [Immunofluorescence](#)
- [Immunoprecipitation](#)
- [Flow Cytometry](#)
- [Cell Culture](#)

### Anti-Herceptin monoclonal antibody (1402CT551.4.30) - Images

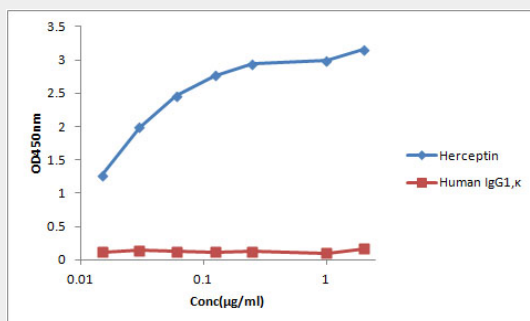


Plate was coated with Herceptin and Human IgG1,κ at 1.25 µg/ml in PBS, and then incubated with anti-Herceptin monoclonal antibody (1402CT551.4.30) from 0.015 µg/ml to 2 µg/ml. The secondary antibody, HRP conjugated goat anti-mouse antibody, were used at 1:10000 dilution.