

Anti- E.coli HCP Polyclonal antibody
Antigen affinity Purified Polyclonal Antibody (Pab)
Catalog # AW5716**Specification**

Anti- E.coli HCP Polyclonal antibody - Product Information

Application	WB, E,E
Host	Goat
Clonality	Polyclonal
Antigen Source	E.coli

Anti- E.coli HCP Polyclonal antibody - Additional Information**Dilution**

WB~~1:1000

E~~1:8000

Format

Purified polyclonal antibody supplied in 0.01M phosphate buffer (pH7.4) with 0.09% (W/V) sodium azide. This antibody was purified through an antigen affinity column, followed by dialysis against PBS.

Storage

Maintain refrigerated at 2-8°C for up to 2 weeks. For long term storage store at -20°C in small aliquots to prevent freeze-thaw cycles.

Precautions

Anti- E.coli HCP Polyclonal antibody is for research use only and not for use in diagnostic or therapeutic procedures.

Anti- E.coli HCP Polyclonal antibody - Protein Information**Anti- E.coli HCP Polyclonal antibody - Protocols**

Provided below are standard protocols that you may find useful for product applications.

- [Western Blot](#)
- [Blocking Peptides](#)
- [Dot Blot](#)
- [Immunohistochemistry](#)
- [Immunofluorescence](#)
- [Immunoprecipitation](#)
- [Flow Cytometry](#)
- [Cell Culture](#)

Anti- E.coli HCP Polyclonal antibody - Images

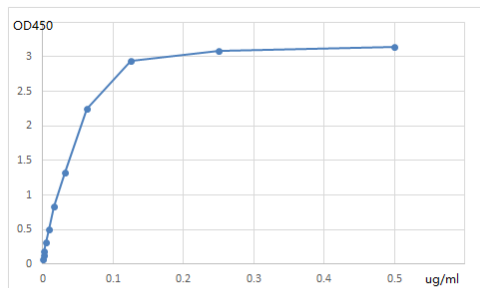
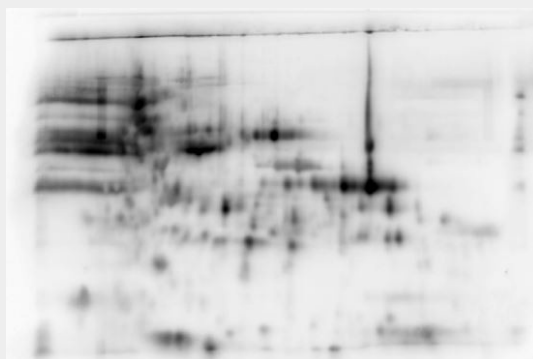


Fig1 ELISA test for Anti-E.coli HCP Polyclonal antibody

The concentration of coating antigen is 1.25 μ g/ml, add parallel control. The antibody (SA190125YA) concentration is doubling dilution from 1 μ g/mL to 0.001 μ g/mL, the second antibody is bovine anti-goat IgG, conjugated with HRP, 1:8000 dilution.