

**SYP Antibody(C-term)**  
**Affinity Purified Rabbit Polyclonal Antibody (Pab)**  
**Catalog # AX10004****Specification**

---

**SYP Antibody(C-term) - Product Information**

Application	WB, IHC-P, IF, FC,E
Primary Accession	<a href="#">P08247</a>
Other Accession	<a href="#">P07825</a> , <a href="#">Q62277</a> , <a href="#">NP_003170.1</a>
Reactivity	Human, Mouse
Predicted	Rat
Host	Rabbit
Clonality	Polyclonal
Isotype	Rabbit IgG
Antigen Region	225-253

**SYP Antibody(C-term) - Additional Information****Gene ID** 6855**Other Names**

Synaptophysin, Major synaptic vesicle protein p38, SYP

**Target/Specificity**

This SYP antibody is generated from rabbits immunized with a KLH conjugated synthetic peptide between 225-253 amino acids from the C-terminal region of human SYP.

**Dilution**

WB~~1:2000  
IHC-P~~1:1000  
IF~~1:100  
FC~~1:50  
E~~Use at an assay dependent concentration.

**Format**

Purified polyclonal antibody supplied in PBS with 0.09% (W/V) sodium azide. This antibody is purified through a protein A column, followed by peptide affinity purification.

**Storage**

Maintain refrigerated at 2-8°C for up to 2 weeks. For long term storage store at -20°C in small aliquots to prevent freeze-thaw cycles.

**Precautions**

SYP Antibody(C-term) is for research use only and not for use in diagnostic or therapeutic procedures.

**SYP Antibody(C-term) - Protein Information**

**Name** SYP

**Function** Possibly involved in structural functions as organizing other membrane components or in targeting the vesicles to the plasma membrane. Involved in the regulation of short-term and long-term synaptic plasticity (By similarity).

**Cellular Location**

Cytoplasmic vesicle, secretory vesicle, synaptic vesicle membrane; Multi-pass membrane protein. Synapse, synaptosome

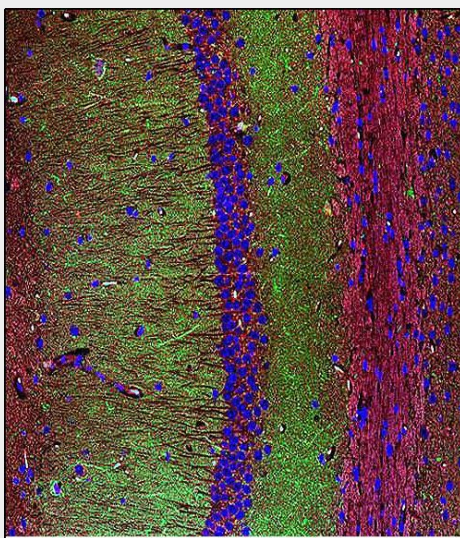
**Tissue Location**

Expressed in the brain, with expression in the hippocampus, the neuropil in the dentate gyrus, where expression is higher in the outer half of the molecular layer than in the inner half, and in the neuropil of CA4 and CA3 (PubMed:8838578). Expressed in the putamen (at protein level) (PubMed:17296554)

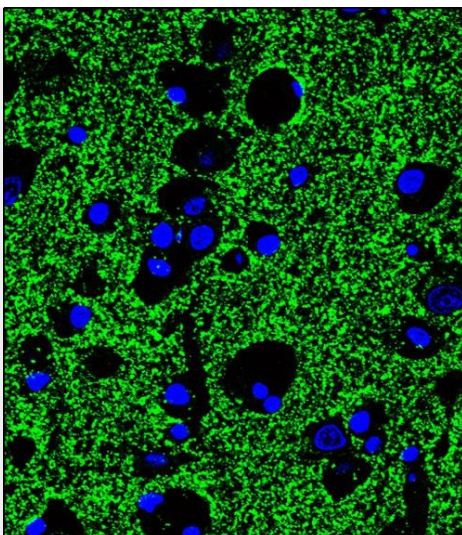
**SYP Antibody(C-term) - Protocols**

Provided below are standard protocols that you may find useful for product applications.

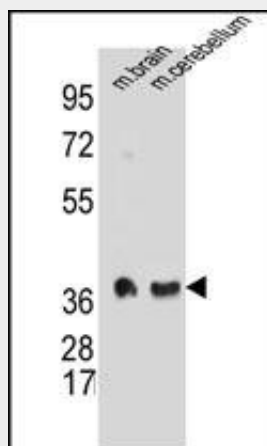
- [Western Blot](#)
- [Blocking Peptides](#)
- [Dot Blot](#)
- [Immunohistochemistry](#)
- [Immunofluorescence](#)
- [Immunoprecipitation](#)
- [Flow Cytometry](#)
- [Cell Culture](#)

**SYP Antibody(C-term) - Images**

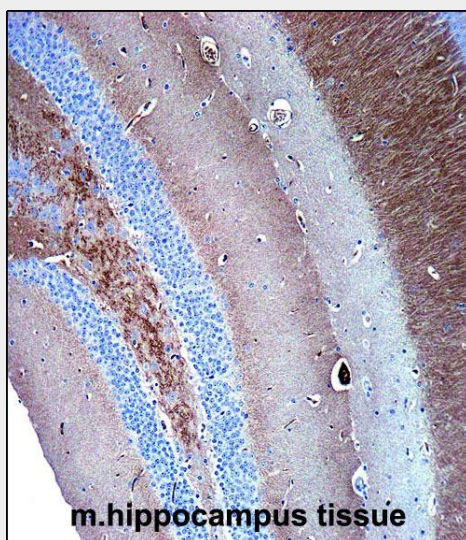
Confocal immunofluorescent analysis of SYP Antibody (C-term) with mouse brain tissue followed by Alexa Fluor 488-conjugated goat anti-rabbit IgG (green). DAPI was used to stain the cell nuclear (blue).



Confocal immunofluorescent analysis of SYP Antibody (C-term) with human brain tissue followed by Alexa Fluor 488-conjugated goat anti-rabbit IgG (green). DAPI was used to stain the cell nuclear (blue).

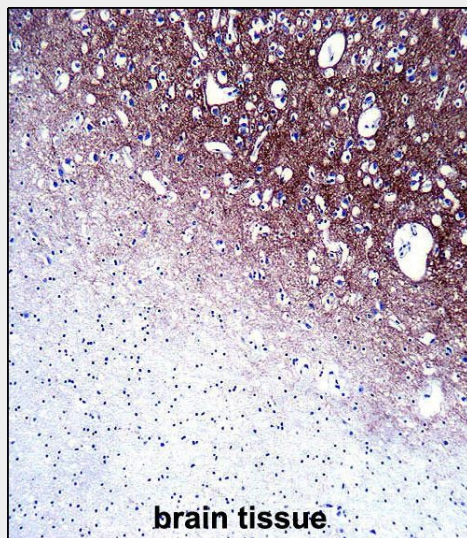


SYP Antibody (C-term) (Cat. #AX10004) western blot analysis in mouse brain and cerebellum tissue lysates (35ug/lane). This demonstrates the SYP antibody detected the SYP protein (arrow).

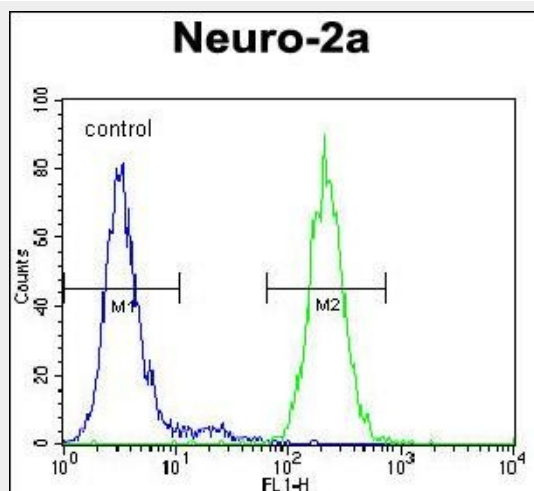


SYP Antibody (C-term) immunohistochemistry analysis in formalin fixed and paraffin embedded

mouse hippocampus tissue followed by peroxidase conjugation of the secondary antibody and DAB staining. This data demonstrates the use of SYP Antibody (C-term) for immunohistochemistry. Clinical relevance has not been evaluated.



SYP Antibody (C-term) immunohistochemistry analysis in formalin fixed and paraffin embedded human brain tissue followed by peroxidase conjugation of the secondary antibody and DAB staining. This data demonstrates the use of SYP Antibody (C-term) for immunohistochemistry. Clinical relevance has not been evaluated.



SYP Antibody (C-term) flow cytometric analysis of Neuro-2a cells (right histogram) compared to a negative control cell (left histogram). FITC-conjugated goat-anti-rabbit secondary antibodies were used for the analysis.

### **SYP Antibody(C-term) - Background**

Synaptophysin (p38) is an integral membrane protein of small synaptic vesicles in brain and endocrine cells. [supplied by OMIM].

### **SYP Antibody(C-term) - References**

Ishida, M., et al. Oncol. Rep. 22(4):733-737(2009) Sterlacci, W., et al. Virchows Arch. 455(2):125-132(2009) Head, E., et al. Neurobiol. Aging 30(7):1125-1134(2009) Gulubova, M., et al. J. Gastroenterol. Hepatol. 23(10):1574-1585(2008) Glantz, L.A., et al. Neuroscience 149(3):582-591(2007)