

Zebrafish PDHA1 Antibody (Center)
Affinity Purified Rabbit Polyclonal Antibody (Pab)
Catalog # AZb9652c**Specification**

Zebrafish PDHA1 Antibody (Center) - Product Information

Application	WB,E
Primary Accession	Q6P948
Other Accession	P26284 , P29804 , P35486 , Q8HXL9 , P08559 , A7MB35
Reactivity	Zebrafish
Predicted	Bovine, Human, Monkey, Mouse, Pig, Rat
Host	Rabbit
Clonality	Polyclonal
Isotype	Rabbit IgG
Calculated MW	43741
Antigen Region	233-263

Zebrafish PDHA1 Antibody (Center) - Additional Information**Gene ID** 406702**Other Names**

PDHE1-A type I; Pyruvate dehydrogenase E1 component subunit alpha, somatic form, mitochondrial; PHE1A, PDHA1;pdha1a;pdha1b

Target/Specificity

This Zebrafish PDHA1 antibody is generated from rabbits immunized with a KLH conjugated synthetic peptide between 233~263 amino acids from the Central region of Zebrafish PDHA1.

Dilution

WB~~1:1000

E~~Use at an assay dependent concentration.

Format

Purified polyclonal antibody supplied in PBS with 0.09% (W/V) sodium azide. This antibody is purified through a protein A column, followed by peptide affinity purification.

Storage

Maintain refrigerated at 2-8°C for up to 2 weeks. For long term storage store at -20°C in small aliquots to prevent freeze-thaw cycles.

Precautions

Zebrafish PDHA1 Antibody (Center) is for research use only and not for use in diagnostic or therapeutic procedures.

Zebrafish PDHA1 Antibody (Center) - Protein Information

Name Q6P948

Function The pyruvate dehydrogenase complex catalyzes the overall conversion of pyruvate to acetyl-CoA and CO₂, and thereby links the glycolytic pathway to the tricarboxylic cycle.

Cellular Location

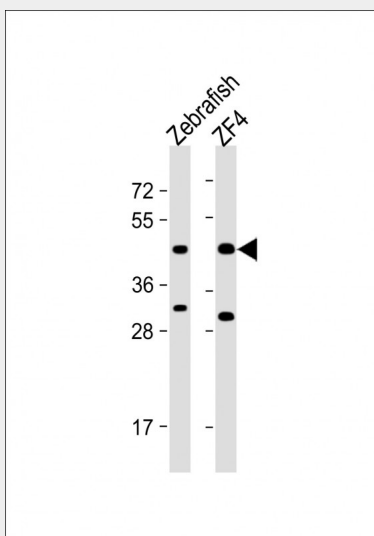
Mitochondrion matrix {ECO:0000256|ARBA:ARBA00004305}

Zebrafish PDHA1 Antibody (Center) - Protocols

Provided below are standard protocols that you may find useful for product applications.

- [Western Blot](#)
- [Blocking Peptides](#)
- [Dot Blot](#)
- [Immunohistochemistry](#)
- [Immunofluorescence](#)
- [Immunoprecipitation](#)
- [Flow Cytometry](#)
- [Cell Culture](#)

Zebrafish PDHA1 Antibody (Center) - Images



All lanes : Anti-PDHA1 Antibody (Center) at 1:1000 dilution Lane 1: Zebrafish lysate Lane 2: ZF4 whole cell lysate Lysates/proteins at 20 µg per lane. Secondary Goat Anti-Rabbit IgG, (H+L), Peroxidase conjugated at 1/10000 dilution. Predicted band size : 44 kDa Blocking/Dilution buffer: 5% NFD/MTBST.

Zebrafish PDHA1 Antibody (Center) - Background

The pyruvate dehydrogenase (PDH) complex is a nuclear-encoded mitochondrial multienzyme complex that catalyzes the overall conversion of pyruvate to acetyl-CoA and CO₂, and provides the primary link between glycolysis and the tricarboxylic acid (TCA) cycle. The PDH complex is composed of multiple copies of three enzymatic components: pyruvate dehydrogenase (E1), dihydrolipoamide acetyltransferase (E2) and lipoamide dehydrogenase (E3). The E1 enzyme is a heterotetramer of two alpha and two beta subunits. This gene encodes the E1 alpha 1 subunit containing the E1 active site, and plays a key role in the function of the PDH complex. Mutations in

this gene are associated with pyruvate dehydrogenase E1-alpha deficiency and X-linked Leigh syndrome.

Zebrafish PDHA1 Antibody (Center) - References

Glushakova, L.G., et al. Mol. Genet. Metab. 98(3):289-299(2009) Joao Silva, M., et al. Eur. J. Pediatr. 168(1):17-22(2009) Boichard, A., et al. Mol. Genet. Metab. 93(3):323-330(2008)