

Zebrafish pax2a Antibody (Center)
Affinity Purified Rabbit Polyclonal Antibody (Pab)
Catalog # Azb10018a**Specification**

Zebrafish pax2a Antibody (Center) - Product Information

| | |
|-------------------|------------------------|
| Application | WB,E |
| Primary Accession | O90268 |
| Reactivity | Zebrafish |
| Host | Rabbit |
| Clonality | Polyclonal |
| Isotype | Rabbit IgG |
| Antigen Region | 258-284 |

Zebrafish pax2a Antibody (Center) - Additional Information**Gene ID** 30425**Other Names**

Paired box protein Pax-2a, No isthmus protein, Pax[Zf-b], pax2a, noi, pax21, paxzf-b

Target/Specificity

This Zebrafish pax2a antibody is generated from rabbits immunized with a KLH conjugated synthetic peptide between 258-284 amino acids from the central region of zebrafish pax2a.

Dilution

WB~~1:1000

E~~Use at an assay dependent concentration.

Format

Purified polyclonal antibody supplied in PBS with 0.09% (W/V) sodium azide. This antibody is purified through a protein A column, followed by peptide affinity purification.

Storage

Maintain refrigerated at 2-8°C for up to 2 weeks. For long term storage store at -20°C in small aliquots to prevent freeze-thaw cycles.

Precautions

Zebrafish pax2a Antibody (Center) is for research use only and not for use in diagnostic or therapeutic procedures.

Zebrafish pax2a Antibody (Center) - Protein Information**Name** pax2a**Synonyms** noi, pax2.1, paxzf-b**Function** Probable transcription factor involved in the development of the midbrain/hindbrain

boundary (MHB) organizer and specification of neuronal cell fates. Required for establishment of eng2 and eng3 gene expression in the midbrain and MHB primordium during late gastrulation.

Cellular Location

Nucleus.

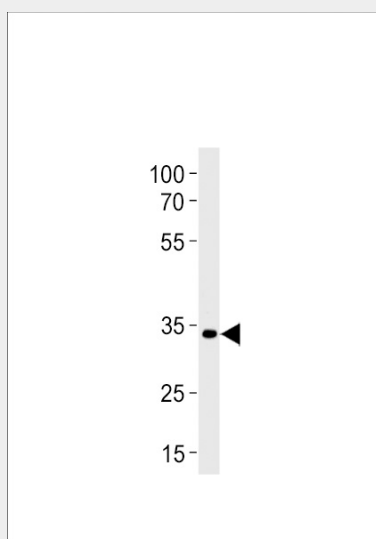
Tissue Location

Expressed during embryogenesis in the kidney, optic stalk, midbrain, otic vesicle and a row of cells along the spinal cord and the hindbrain

Zebrafish pax2a Antibody (Center) - Protocols

Provided below are standard protocols that you may find useful for product applications.

- [Western Blot](#)
- [Blocking Peptides](#)
- [Dot Blot](#)
- [Immunohistochemistry](#)
- [Immunofluorescence](#)
- [Immunoprecipitation](#)
- [Flow Cytometry](#)
- [Cell Culture](#)

Zebrafish pax2a Antibody (Center) - Images

Zebrafish pax2a Antibody (Center) (Cat. #Azb10018a) western blot analysis in zebrafish brain tissue lysates (35ug/lane). This demonstrates the Zebrafish pax2a antibody detected the zebrafish pax2a protein (arrow).

Zebrafish pax2a Antibody (Center) - Background

Probable transcription factor involved in the development of the midbrain/hindbrain boundary (MHB) organizer and specification of neuronal cell fates. Required for establishment of eng2 and eng3 gene expression in the midbrain and MHB primordium during late gastrulation.

Zebrafish pax2a Antibody (Center) - References

Krauss S., et al. Development 113:1193-1206(1991).
Lun K., et al. Development 125:3049-3062(1998).