

**Zebrafish tfap2e Antibody (C-term)**  
**Affinity Purified Rabbit Polyclonal Antibody (Pab)**  
**Catalog # Azb10019a**

**Specification**

---

**Zebrafish tfap2e Antibody (C-term) - Product Information**

Application	WB,E
Primary Accession	<a href="#">Q6P0E7</a>
Reactivity	Zebrafish
Host	Rabbit
Clonality	Polyclonal
Isotype	Rabbit IgG
Antigen Region	304-330

**Zebrafish tfap2e Antibody (C-term) - Additional Information**

**Gene ID** 393794

**Other Names**

Transcription factor AP-2-epsilon, AP-2-epsilon, tfap2e  
{ECO:0000312|ZFIN:ZDB-GENE-040426-1455}

**Target/Specificity**

This Zebrafish tfap2e antibody is generated from rabbits immunized with a KLH conjugated synthetic peptide between 304-330 amino acids from the C-terminal region of zebrafish tfap2e.

**Dilution**

WB~~1:1000  
E~~Use at an assay dependent concentration.

**Format**

Purified polyclonal antibody supplied in PBS with 0.09% (W/V) sodium azide. This antibody is purified through a protein A column, followed by peptide affinity purification.

**Storage**

Maintain refrigerated at 2-8°C for up to 2 weeks. For long term storage store at -20°C in small aliquots to prevent freeze-thaw cycles.

**Precautions**

Zebrafish tfap2e Antibody (C-term) is for research use only and not for use in diagnostic or therapeutic procedures.

**Zebrafish tfap2e Antibody (C-term) - Protein Information**

**Name** tfap2e {ECO:0000312|ZFIN:ZDB-GENE-040426-1455}

**Function** Sequence-specific DNA-binding protein that interacts with inducible viral and cellular enhancer elements to regulate transcription of selected genes. AP-2 factors bind to the consensus

sequence 5'-GCCNNNGGC-3' and activate genes involved in a large spectrum of important biological functions.

#### Cellular Location

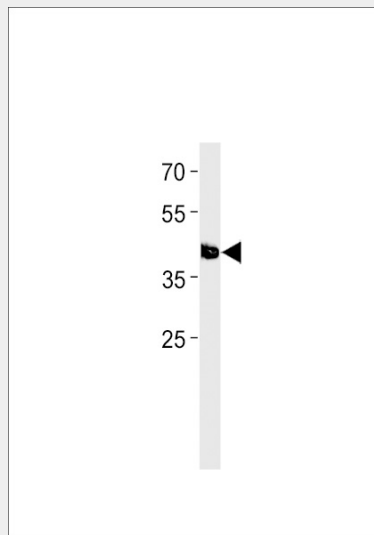
Nucleus {ECO:0000250|UniProtKB:Q6VUP9}.

### Zebrafish tfap2e Antibody (C-term) - Protocols

Provided below are standard protocols that you may find useful for product applications.

- [Western Blot](#)
- [Blocking Peptides](#)
- [Dot Blot](#)
- [Immunohistochemistry](#)
- [Immunofluorescence](#)
- [Immunoprecipitation](#)
- [Flow Cytometry](#)
- [Cell Culture](#)

### Zebrafish tfap2e Antibody (C-term) - Images



Zebrafish tfap2e Antibody (C-term) (Cat. #Azb10019a) western blot analysis in zebrafish brain tissue lysates (35ug/lane). This demonstrates the Zebrafish tfap2e antibody detected the zebrafish tfap2e protein (arrow).

### Zebrafish tfap2e Antibody (C-term) - Background

Sequence-specific DNA-binding protein that interacts with inducible viral and cellular enhancer elements to regulate transcription of selected genes. AP-2 factors bind to the consensus sequence 5'-GCCNNNGGC-3' and activate genes involved in a large spectrum of important biological functions.