

Zebrafish ywhag1 Antibody (Center)
Affinity Purified Rabbit Polyclonal Antibody (Pab)
Catalog # Azb10022c**Specification**

Zebrafish ywhag1 Antibody (Center) - Product Information

Application	WB,E
Primary Accession	Q6PC29
Reactivity	Zebrafish
Host	Rabbit
Clonality	Polyclonal
Isotype	Rabbit IgG
Antigen Region	137-162

Zebrafish ywhag1 Antibody (Center) - Additional Information**Gene ID** 117604**Other Names**

14-3-3 protein gamma-1, ywhag1, ywhag

Target/Specificity

This Zebrafish ywhag1 antibody is generated from rabbits immunized with a KLH conjugated synthetic peptide between 137-162 amino acids from the central region of zebrafish ywhag1.

Dilution

WB~~1:8000

E~~Use at an assay dependent concentration.

Format

Purified polyclonal antibody supplied in PBS with 0.09% (W/V) sodium azide. This antibody is purified through a protein A column, followed by peptide affinity purification.

Storage

Maintain refrigerated at 2-8°C for up to 2 weeks. For long term storage store at -20°C in small aliquots to prevent freeze-thaw cycles.

Precautions

Zebrafish ywhag1 Antibody (Center) is for research use only and not for use in diagnostic or therapeutic procedures.

Zebrafish ywhag1 Antibody (Center) - Protein Information**Name** ywhag1**Synonyms** ywhag**Function** Adapter protein implicated in the regulation of a large spectrum of both general and

specialized signaling pathways. Binds to a large number of partners, usually by recognition of a phosphoserine or phosphothreonine motif. Binding generally results in the modulation of the activity of the binding partner.

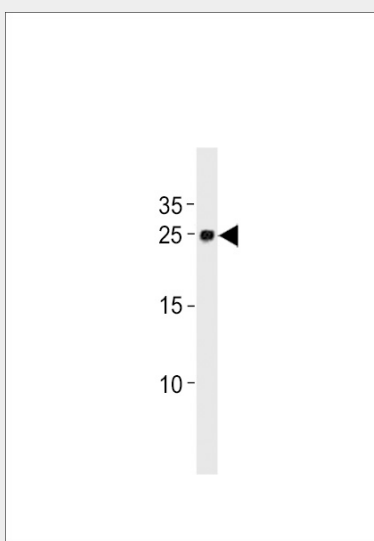
Cellular Location

Cytoplasm {ECO:0000250|UniProtKB:P68252}.

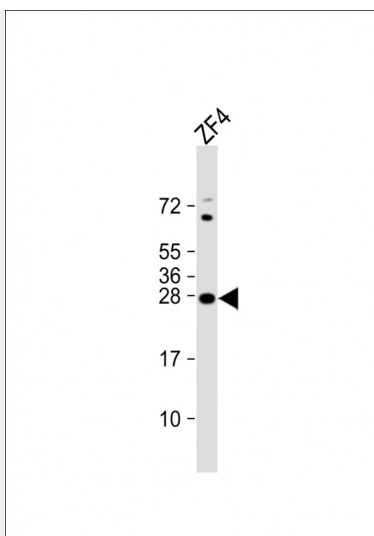
Zebrafish ywhag1 Antibody (Center) - Protocols

Provided below are standard protocols that you may find useful for product applications.

- [Western Blot](#)
- [Blocking Peptides](#)
- [Dot Blot](#)
- [Immunohistochemistry](#)
- [Immunofluorescence](#)
- [Immunoprecipitation](#)
- [Flow Cytometry](#)
- [Cell Culture](#)

Zebrafish ywhag1 Antibody (Center) - Images

Zebrafish ywhag1 Antibody (Center) (Cat. #Azb10022c) western blot analysis in zebrafish brain tissue lysates (35ug/lane). This demonstrates the Zebrafish ywhag1 antibody detected the zebrafish ywhag1 protein (arrow).



Anti-Zebrafishywhag1 Antibody (Center) at 1:8000 dilution + ZF4 whole cell lysate
Lysates/proteins at 20 µg per lane. Secondary Goat Anti-Rabbit IgG, (H+L), Peroxidase conjugated
at 1/10000 dilution. Predicted band size : 28 kDa Blocking/Dilution buffer: 5% NFDM/TBST.

Zebrafish ywhag1 Antibody (Center) - Background

Adapter protein implicated in the regulation of a large spectrum of both general and specialized signaling pathways. Binds to a large number of partners, usually by recognition of a phosphoserine or phosphothreonine motif. Binding generally results in the modulation of the activity of the binding partner (By similarity).