

**Zebrafish heg Antibody (C-term)**  
**Affinity Purified Rabbit Polyclonal Antibody (Pab)**  
**Catalog # Azb10023b**

## Specification

---

### Zebrafish heg Antibody (C-term) - Product Information

Application	WB,E
Primary Accession	<a href="#">Q6R8J2</a>
Reactivity	Zebrafish
Host	Rabbit
Clonality	Polyclonal
Isotype	Rabbit IgG
Antigen Region	691-717

### Zebrafish heg Antibody (C-term) - Additional Information

#### Other Names

Protein HEG, Heart of glass, heg

#### Target/Specificity

This Zebrafish heg antibody is generated from rabbits immunized with a KLH conjugated synthetic peptide between 691-717 amino acids from the C-terminal region of zebrafish heg.

#### Dilution

WB~~1:1000

E~~Use at an assay dependent concentration.

#### Format

Purified polyclonal antibody supplied in PBS with 0.09% (W/V) sodium azide. This antibody is purified through a protein A column, followed by peptide affinity purification.

#### Storage

Maintain refrigerated at 2-8°C for up to 2 weeks. For long term storage store at -20°C in small aliquots to prevent freeze-thaw cycles.

#### Precautions

Zebrafish heg Antibody (C-term) is for research use only and not for use in diagnostic or therapeutic procedures.

### Zebrafish heg Antibody (C-term) - Protein Information

#### Name heg

**Function** Receptor component of the CCM signaling pathway which is a crucial regulator of heart and vessel formation and integrity. May act through the stabilization of endothelial cell junctions.

#### Cellular Location

[Isoform 1]: Cell membrane; Single- pass type I membrane protein. Cell junction [Isoform 3]:

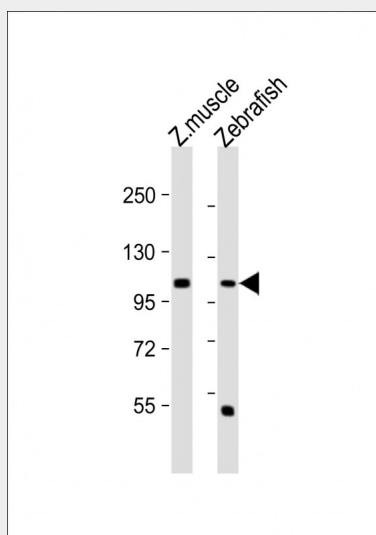
Secreted.

### **Zebrafish heg Antibody (C-term) - Protocols**

Provided below are standard protocols that you may find useful for product applications.

- [Western Blot](#)
- [Blocking Peptides](#)
- [Dot Blot](#)
- [Immunohistochemistry](#)
- [Immunofluorescence](#)
- [Immunoprecipitation](#)
- [Flow Cytometry](#)
- [Cell Culture](#)

### **Zebrafish heg Antibody (C-term) - Images**



All lanes : Anti-Zebrafish heg Antibody (C-term) at 1:1000 dilution Lane 1: Zebrafish muscle lysate Lane 2: Zebrafish lysate Lysates/proteins at 20 µg per lane. Secondary Goat Anti-Rabbit IgG, (H+L), Peroxidase conjugated at 1/10000 dilution. Predicted band size : 106 kDa Blocking/Dilution buffer: 5% NFDM/TBST.

### **Zebrafish heg Antibody (C-term) - Background**

Receptor component of the CCM signaling pathway which is a crucial regulator of heart and vessel formation and integrity. May act through the stabilization of endothelial cell junctions.

### **Zebrafish heg Antibody (C-term) - References**

Mably J.D., et al. Curr. Biol. 13:2138-2147(2003).  
Kleaveland B., et al. Nat. Med. 15:169-176(2009).