

Zebrafish selm Antibody (C-term)
Affinity Purified Rabbit Polyclonal Antibody (Pab)
Catalog # Azb10029b

Specification

Zebrafish selm Antibody (C-term) - Product Information

Application	WB,E
Primary Accession	Q802G7
Reactivity	Zebrafish
Host	Rabbit
Clonality	Polyclonal
Isotype	Rabbit IgG
Antigen Region	96-119

Zebrafish selm Antibody (C-term) - Additional Information

Other Names

Selenoprotein M, SePM, SelM, selm, sepm

Target/Specificity

This Zebrafish selm antibody is generated from rabbits immunized with a KLH conjugated synthetic peptide between 96-119 amino acids from the C-terminal region of zebrafish selm.

Dilution

WB~~1:1000

E~~Use at an assay dependent concentration.

Format

Purified polyclonal antibody supplied in PBS with 0.09% (W/V) sodium azide. This antibody is purified through a protein A column, followed by peptide affinity purification.

Storage

Maintain refrigerated at 2-8°C for up to 2 weeks. For long term storage store at -20°C in small aliquots to prevent freeze-thaw cycles.

Precautions

Zebrafish selm Antibody (C-term) is for research use only and not for use in diagnostic or therapeutic procedures.

Zebrafish selm Antibody (C-term) - Protein Information

Name Selenom {ECO:0000250|UniProtKB:Q8WWX9}

Function May function as a thiol-disulfide oxidoreductase that participates in disulfide bond formation.

Tissue Location

During early embryogenesis, abundantly expressed within the notochord and anterior somites. At

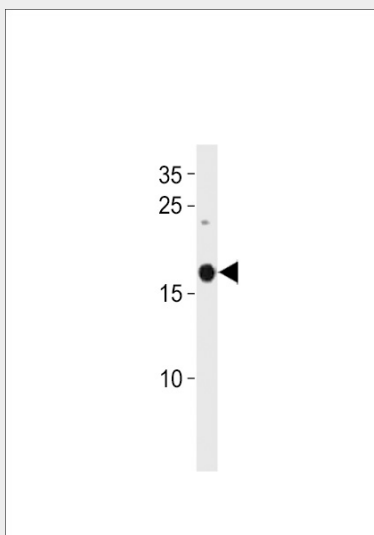
later stages, accumulates within the axial fin fold, dorsal spinal cord neurons, then in lateral line neuromasts.

Zebrafish selm Antibody (C-term) - Protocols

Provided below are standard protocols that you may find useful for product applications.

- [Western Blot](#)
- [Blocking Peptides](#)
- [Dot Blot](#)
- [Immunohistochemistry](#)
- [Immunofluorescence](#)
- [Immunoprecipitation](#)
- [Flow Cytometry](#)
- [Cell Culture](#)

Zebrafish selm Antibody (C-term) - Images



Zebrafish selm Antibody (C-term) (Cat. #Azb10029b) western blot analysis in zebrafish heart tissue lysates (35ug/lane). This demonstrates the Zebrafish selm antibody detected the zebrafish selm protein (arrow).

Zebrafish selm Antibody (C-term) - Background

May function as a thiol-disulfide oxidoreductase that participates in disulfide bond formation (By similarity).

Zebrafish selm Antibody (C-term) - References

Thisse C., et al. Gene Expr. Patterns 3:525-532(2003).