

**Zebrafish tcf21 Antibody (N-term)**  
**Affinity Purified Rabbit Polyclonal Antibody (Pab)**  
**Catalog # Azb10030a**

## Specification

---

### Zebrafish tcf21 Antibody (N-term) - Product Information

Application	WB,E
Primary Accession	<a href="#">Q32PV5</a>
Reactivity	Zebrafish
Host	Rabbit
Clonality	Polyclonal
Isotype	Rabbit IgG
Antigen Region	5-35

### Zebrafish tcf21 Antibody (N-term) - Additional Information

**Gene ID** 558148

#### Other Names

Transcription factor 21 {ECO:0000312|EMBL:AAI079691}, TCF-21, Capsulin  
{ECO:0000312|EMBL:ABU954061}, Epicardin, MyoRa2, TCF21

#### Target/Specificity

This Zebrafish tcf21 antibody is generated from rabbits immunized with a KLH conjugated synthetic peptide between 5-35 amino acids from the N-terminal region of zebrafish tcf21.

#### Dilution

WB~~1:1000

E~~Use at an assay dependent concentration.

#### Format

Purified polyclonal antibody supplied in PBS with 0.09% (W/V) sodium azide. This antibody is purified through a protein A column, followed by peptide affinity purification.

#### Storage

Maintain refrigerated at 2-8°C for up to 2 weeks. For long term storage store at -20°C in small aliquots to prevent freeze-thaw cycles.

#### Precautions

Zebrafish tcf21 Antibody (N-term) is for research use only and not for use in diagnostic or therapeutic procedures.

### Zebrafish tcf21 Antibody (N-term) - Protein Information

**Name** TCF21

**Function** Involved in epithelial-mesenchymal interactions in kidney and lung morphogenesis that include epithelial differentiation and branching morphogenesis.

**Cellular Location**

Nucleus {ECO:0000250|UniProtKB:O43680, ECO:0000255|PROSITE-ProRule:PRU00981}

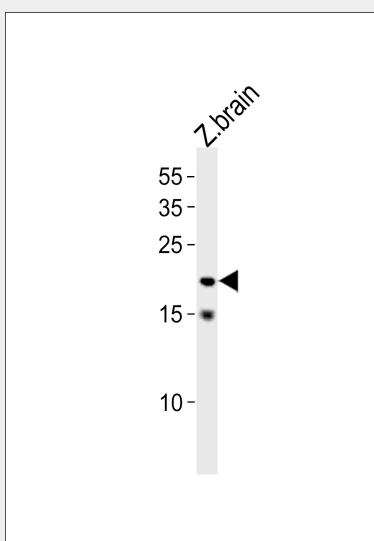
**Tissue Location**

Expressed in the cranial paraxial mesoderm from 20 hpf and subsequently becomes restricted to the pharyngeal mesoderm that will form the muscle. Expression in the proepicardial organ is first seen at 40hpf in a cluster of cells between the myocardium and yolk. Also expressed in the developing arches. Expression begins to surround the heart by day 3 of development, and by 96 hpf, expression is restricted to the outer epicardial layer surrounding the myocardium.

**Zebrafish tcf21 Antibody (N-term) - Protocols**

Provided below are standard protocols that you may find useful for product applications.

- [Western Blot](#)
- [Blocking Peptides](#)
- [Dot Blot](#)
- [Immunohistochemistry](#)
- [Immunofluorescence](#)
- [Immunoprecipitation](#)
- [Flow Cytometry](#)
- [Cell Culture](#)

**Zebrafish tcf21 Antibody (N-term) - Images**

Zebrafish tcf21 Antibody (N-term) (Cat. #Azb10030a) western blot analysis in zebrafish brain tissue lysates (35ug/lane). This demonstrates the Zebrafish tcf21 antibody detected the zebrafish tcf21 protein (arrow).

**Zebrafish tcf21 Antibody (N-term) - Background**

Involved in epithelial-mesenchymal interactions in kidney and lung morphogenesis that include epithelial differentiation and branching morphogenesis (By similarity).

**Zebrafish tcf21 Antibody (N-term) - References**

Wang Y., et al. J. Mol. Evol. 68:629-640(2009).

Chang M.-Y., et al. Submitted (MAY-2007) to the EMBL/GenBank/DDBJ databases.  
Serluca F.C., et al. Dev. Biol. 315:18-27(2008).  
Knight R.D., et al. J. Exp. Zool. B Mol. Dev. Evol. 310:355-369(2008).